



UK Office

Everest Biotech Ltd

Cherwell Innovation Centre
77 Heyford Park
Upper Heyford
Oxfordshire
OX25 5HD
UK

Enquiries:

info@everestbiotech.com

Sales:

sales@everestbiotech.com

Tech support:

support@everestbiotech.com

Tel: +44 (0)1869 238326

www.everestbiotech.com

**Research Use Only. Not for
diagnostic or therapeutic use.**

EB06303 - Goat Anti-FHL2 Antibody

Size: 100µg specific antibody in 200µl



Target Protein

Principal Names: FHL2, DRAL, AAG11, SLIM3, four and a half LIM domains 2, down-regulated in rhabdomyosarcoma LIM protein, aging-associated gene 11, four and a half LIM-domain protein 2, OTTHUMP00000203164, OTTHUMP00000203168, OTTHUMP00000203169

Official Symbol: FHL2

Accession Number(s): NP_001441.4

Human GeneID(s): [2274](#)

Non-Human GeneID(s): 14200 (mouse), 63839 (rat)

Important Comments: Reported variants represent identical protein (NP_001441.4; NP_963849.1; NP_963851.2; NP_001034581.1).

Immunogen

Peptide with sequence RDDILCPDCGKDI, from the C Terminus of the protein sequence according to NP_001441.4.

Please note the [peptide](#) is available for sale.

Purification and Storage

Purified from goat serum by ammonium sulphate precipitation followed by antigen affinity chromatography using the immunizing peptide.

Supplied at 0.5 mg/ml in Tris saline, 0.02% sodium azide, pH7.3 with 0.5% bovine serum albumin.

Aliquot and store at -20°C. Minimize freezing and thawing.

Applications Tested

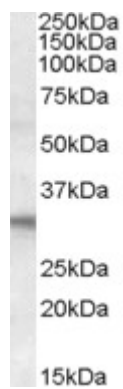
Peptide ELISA: antibody detection limit dilution 1:16000.

Western blot: Approx 30kDa band observed in Human and Mouse Heart lysates (calculated MW of 32.2kDa according to NP_001441.4). Recommended concentration: 1-3µg/ml.

Species Reactivity

Tested: Human, Mouse

Expected from sequence similarity: Human, Mouse, Rat, Dog, Cow



EB06303 (1µg/ml) staining of Human Heart lysate (35µg protein in RIPA buffer). Primary incubation was 1 hour.
Detected by chemiluminescence.