



## International Office

### Everest Biotech Ltd

Vector Laboratories, Inc.  
6737 Mowry Ave  
Newark, CA 94560  
United States

Customer Service:

[customerservice@vectorlabs.com](mailto:customerservice@vectorlabs.com)

Technical Service:

[technical@vectorlabs.com](mailto:technical@vectorlabs.com)

Tel: +1 (800) 227-6666

[www.everestbiotech.com](http://www.everestbiotech.com)

**Research Use Only. Not for  
diagnostic or therapeutic use.**

## EB11640 - Goat Anti-Fibrillarin / FBL Antibody

Size: 100µg specific antibody in 200µl



### Target Protein

**Principal Names:** 34 kDa nucleolar scleroderma antigen, 34-kD nucleolar scleroderma antigen, FBL, FIB, fibrillarin, FLRN, RNA, U3 small nucleolar interacting protein 1, RNU3IP1, rRNA 2'-O-methyltransferase fibrillarin

**Official Symbol:** FBL

**Accession Number(s):** NP\_001427.2

**Human GeneID(s):** [2091](#)

**Non-Human GeneID(s):** 14113 (mouse), 292747 (rat)

### Immunogen

Peptide with sequence C-KRVSISEGDDKIEYR, from the internal region of the protein sequence according to NP\_001427.2.

Please note the [peptide](#) is available for sale.

### Purification and Storage

Purified from goat serum by ammonium sulphate precipitation followed by antigen affinity chromatography using the immunizing peptide.

Supplied at 0.5 mg/ml in Tris saline, 0.02% sodium azide, pH7.3 with 0.5% bovine serum albumin.

Aliquot and store at -20°C. Minimize freezing and thawing.

### Applications Tested

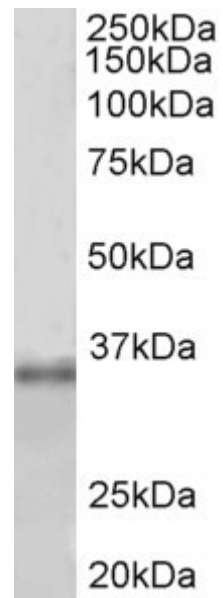
**Peptide ELISA:** antibody detection limit dilution 1:32000.

**Western blot:** Approx 35kDa band observed in lysates of cell line HEK293 (calculated MW of 33.8kDa according to NP\_001427.2). Recommended concentration: 1-3µg/ml. Primary incubation 1 hour at room temperature.

### Species Reactivity

**Tested:** Human

**Expected from sequence similarity:** Human, Mouse, Rat, Dog, Pig, Cow



EB11640 (1 $\mu$ g/ml) staining of HEK293 lysate (35 $\mu$ g protein in RIPA buffer). Primary incubation was 1 hour.  
Detected by chemiluminescence.