



UK Office

Everest Biotech Ltd

Cherwell Innovation Centre
77 Heyford Park
Upper Heyford
Oxfordshire
OX25 5HD
UK

Enquiries:

info@everestbiotech.com

Sales:

sales@everestbiotech.com

Tech support:

support@everestbiotech.com

Tel: +44 (0)1869 238326

www.everestbiotech.com

**Research Use Only. Not for
diagnostic or therapeutic use.**

EB12378 - Goat Anti-fibrinogen beta chain (aa177-190) Antibody

Size: 100µg specific antibody in 200µl



Target Protein

Principal Names: FGB, fibrinogen beta chain, fibrinogen, B beta polypeptide

Official Symbol: FGB

Accession Number(s): NP_005132.2; NP_001171670.1

Human GeneID(s): [2244](#)

Important Comments: This antibody is expected to recognize both reported isoforms (NP_005132.2; NP_001171670.1).

Immunogen

Peptide with sequence C-EKHQLYIDETVNSN, from the internal region of the protein sequence according to NP_005132.2; NP_001171670.1.

Please note the [peptide](#) is available for sale.

Purification and Storage

Purified from goat serum by ammonium sulphate precipitation followed by antigen affinity chromatography using the immunizing peptide.

Supplied at 0.5 mg/ml in Tris saline, 0.02% sodium azide, pH7.3 with 0.5% bovine serum albumin.

Aliquot and store at -20°C. Minimize freezing and thawing.

Applications Tested

Peptide ELISA: antibody detection limit dilution 1:128000.

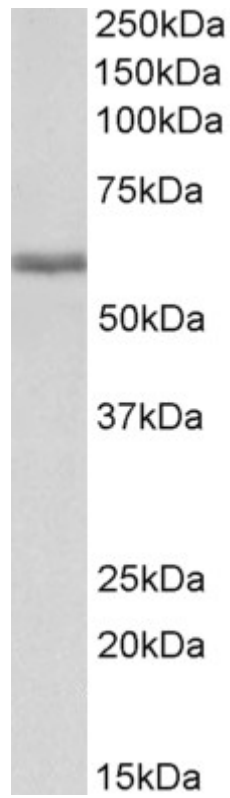
Western blot: Approx 60kDa band observed in Human Liver lysates (calculated MW of 55.9kDa according to NP_005132.2). Recommended concentration: 0.01-0.03µg/ml. Primary incubation 1 hour at room temperature. Preliminary testing was unsuccessful on Pig Liver for this particular batch.

IHC: Paraffin embedded Human Placenta and Kidney. Recommended concentration: 5µg/ml.

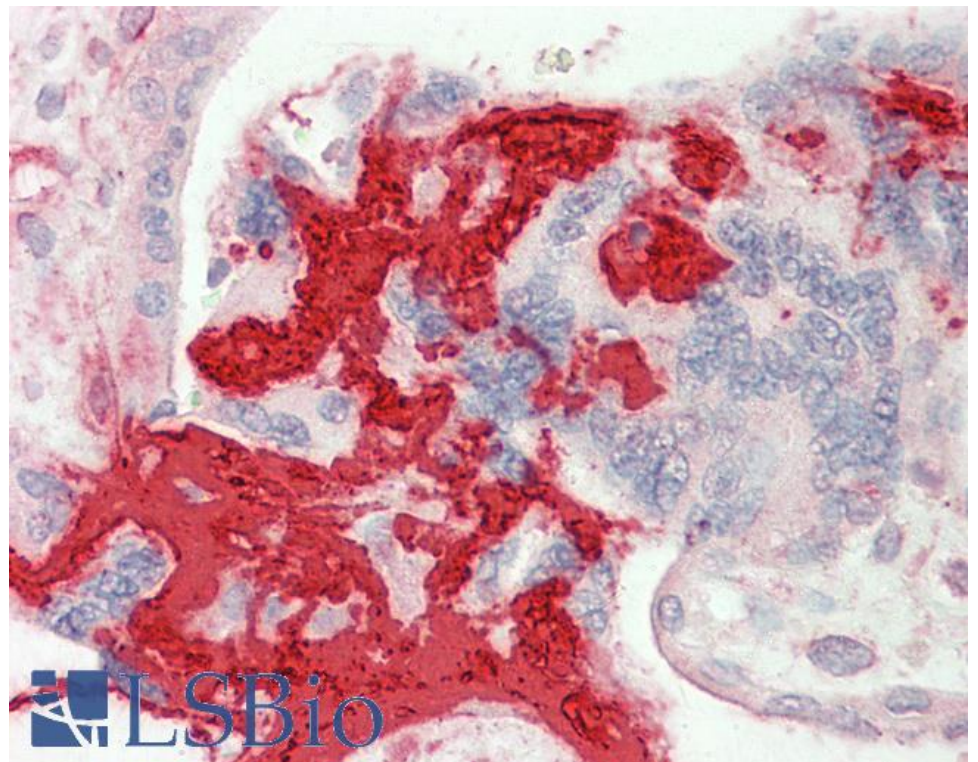
Species Reactivity

Tested: Human

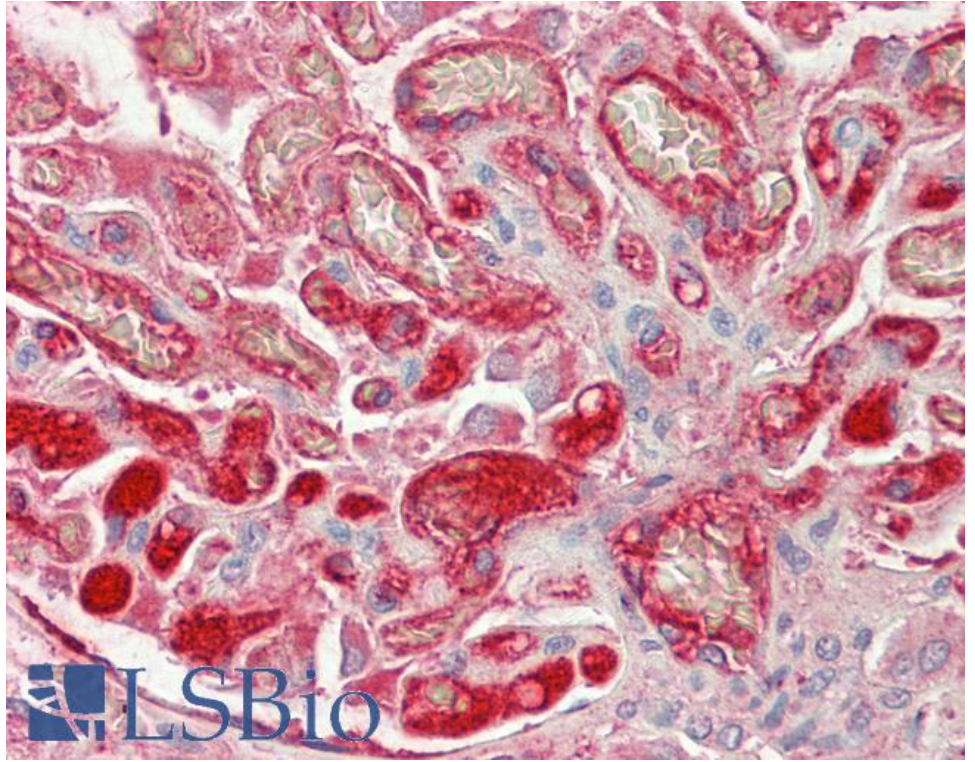
Expected from sequence similarity: Human, Pig



EB12378 (0.01 μ g/ml) staining of Human Liver lysate (35 μ g protein in RIPA buffer). Detected by chemiluminescence.



EB12378 (5 μ g/ml) staining of paraffin embedded Human Placenta. Steamed antigen retrieval with citrate buffer Ph 6, AP-staining.



EB12378 (5µg/ml) staining of paraffin embedded Human Kidney. Steamed antigen retrieval with citrate buffer pH 6, AP-staining.