



UK Office

Everest Biotech Ltd

Cherwell Innovation Centre
77 Heyford Park
Upper Heyford
Oxfordshire
OX25 5HD
UK

Enquiries:

info@everestbiotech.com

Sales:

sales@everestbiotech.com

Tech support:

support@everestbiotech.com

Tel: +44 (0)1869 238326

www.everestbiotech.com

**Research Use Only. Not for
diagnostic or therapeutic use.**

EB12381 - Goat Anti-fibrinogen gamma chain Antibody

Size: 100µg specific antibody in 200µl



Target Protein

Principal Names: FGG, fibrinogen gamma chain, fibrinogen, gamma polypeptide

Official Symbol: FGG

Accession Number(s): NP_000500.2; NP_068656.2

Human GeneID(s): [2266](#)

Important Comments: This antibody is expected to recognize both reported isoforms (NP_000500.2; NP_068656.2).

Immunogen

Peptide with sequence C-QDIANKGAKQS, from the internal region of the protein sequence according to NP_000500.2; NP_068656.2.

Please note the [peptide](#) is available for sale.

Purification and Storage

Purified from goat serum by ammonium sulphate precipitation followed by antigen affinity chromatography using the immunizing peptide.

Supplied at 0.5 mg/ml in Tris saline, 0.02% sodium azide, pH7.3 with 0.5% bovine serum albumin.

Aliquot and store at -20°C. Minimize freezing and thawing.

Applications Tested

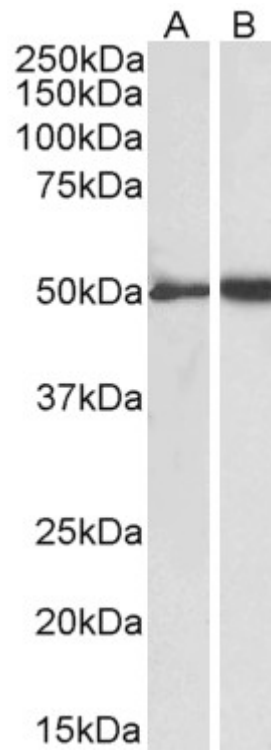
Peptide ELISA: antibody detection limit dilution 1:64000.

Western blot: Approx 50kDa band observed in Human Plasma and Human Platelets lysates (calculated MW of 49.5kDa according to NP_000500.2). Recommended concentration: 0.1-0.3µg/ml.

Species Reactivity

Tested: Human

Expected from sequence similarity: Human



EB12381 (0.1µg/ml) staining of Human Plasma (A) and Platelets (B) lysates (35µg protein in RIPA buffer). Primary incubation was 1 hour. Detected by chemiluminescence.