



## International Office

### Everest Biotech Ltd

Vector Laboratories, Inc.  
6737 Mowry Ave  
Newark, CA 94560  
United States

Customer Service:

[customerservice@vectorlabs.com](mailto:customerservice@vectorlabs.com)

Technical Service:

[technical@vectorlabs.com](mailto:technical@vectorlabs.com)

Tel: +1 (800) 227-6666

[www.everestbiotech.com](http://www.everestbiotech.com)

**Research Use Only. Not for  
diagnostic or therapeutic use.**

## EB06563 - Goat Anti-FLVCR Antibody

Size: 100µg specific antibody in 200µl



### Target Protein

**Principal Names:** FLVCR, feline leukemia virus subgroup C cellular receptor, FLVCR protein

**Official Symbol:** FLVCR1

**Accession Number(s):** NP\_054772.1

**Human GeneID(s):** [28982](#)

### Immunogen

Peptide with sequence C-KTVMLSKQSESAI, from the C Terminus of the protein sequence according to NP\_054772.1.

Please note the [peptide](#) is available for sale.

### Purification and Storage

Purified from goat serum by ammonium sulphate precipitation followed by antigen affinity chromatography using the immunizing peptide.

Supplied at 0.5 mg/ml in Tris saline, 0.02% sodium azide, pH7.3 with 0.5% bovine serum albumin.

Aliquot and store at -20°C. Minimize freezing and thawing.

### Applications Tested

**Peptide ELISA:** antibody detection limit dilution 1:128000.

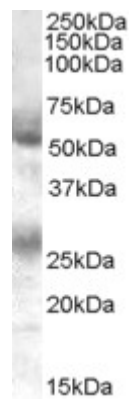
**Western blot:** Approx 55kDa band observed in Human Bone Marrow lysates (calculated MW of 59.9kDa according to NP\_054772.1). Recommended concentration: 0.1-0.3µg/ml.

An additional band of unknown identity was also consistently observed at 26kDa. This band was successfully blocked by incubation with the immunising peptide. We would appreciate any feedback from people in the field - have any such results been reported with other antibodies/lysates? Have any further splice variants/modified forms been reported? Anonymous customer reported successful use in WB on cell line K562.

### Species Reactivity

**Tested:** Human

**Expected from sequence similarity:** Human



EB06563 (0.1µg/ml) staining of Human Bone Marrow lysate (35µg protein in RIPA buffer). Primary incubation was 1 hour. Detected by chemiluminescence.