



## International Office

### Everest Biotech Ltd

Vector Laboratories, Inc.  
6737 Mowry Ave  
Newark, CA 94560  
United States

Customer Service:

[customerservice@vectorlabs.com](mailto:customerservice@vectorlabs.com)

Technical Service:

[technical@vectorlabs.com](mailto:technical@vectorlabs.com)

Tel: +1 (800) 227-6666

[www.everestbiotech.com](http://www.everestbiotech.com)

**Research Use Only. Not for  
diagnostic or therapeutic use.**

## EB09362 - Goat Anti-FMR1 (aa116-130) Antibody

Size: 100µg specific antibody in 200µl



### Target Protein

**Principal Names:** FMR1, fragile X mental retardation 1, FMRP, FRAXA, MGC87458

**Official Symbol:** FMR1

**Accession Number(s):** NP\_002015.1

**Human GeneID(s):** [2332](#)

**Non-Human GeneID(s):** 24948 (rat)

### Immunogen

Peptide with sequence C-NPNKPATKDTFHKIK, from the internal region of the protein sequence according to NP\_002015.1.

Please note the [peptide](#) is available for sale.

### Purification and Storage

Purified from goat serum by ammonium sulphate precipitation followed by antigen affinity chromatography using the immunizing peptide.

Supplied at 0.5 mg/ml in Tris saline, 0.02% sodium azide, pH7.3 with 0.5% bovine serum albumin.

Aliquot and store at -20°C. Minimize freezing and thawing.

### Applications Tested

**Peptide ELISA:** antibody detection limit dilution 1:32000.

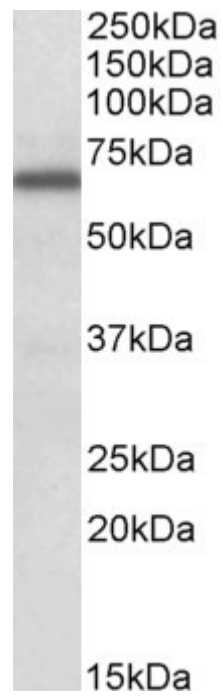
**Western blot:** Approx 70kDa band observed in lysates of cell lines HeLa, Jurkat and Kelly (calculated MW of 71.2kDa according to NP\_002015.1). Recommended concentration: 0.3-1µg/ml.

**IHC:** Paraffin embedded Human Brain (Cortex) and Placenta. Recommended concentration: 2.5µg/ml.

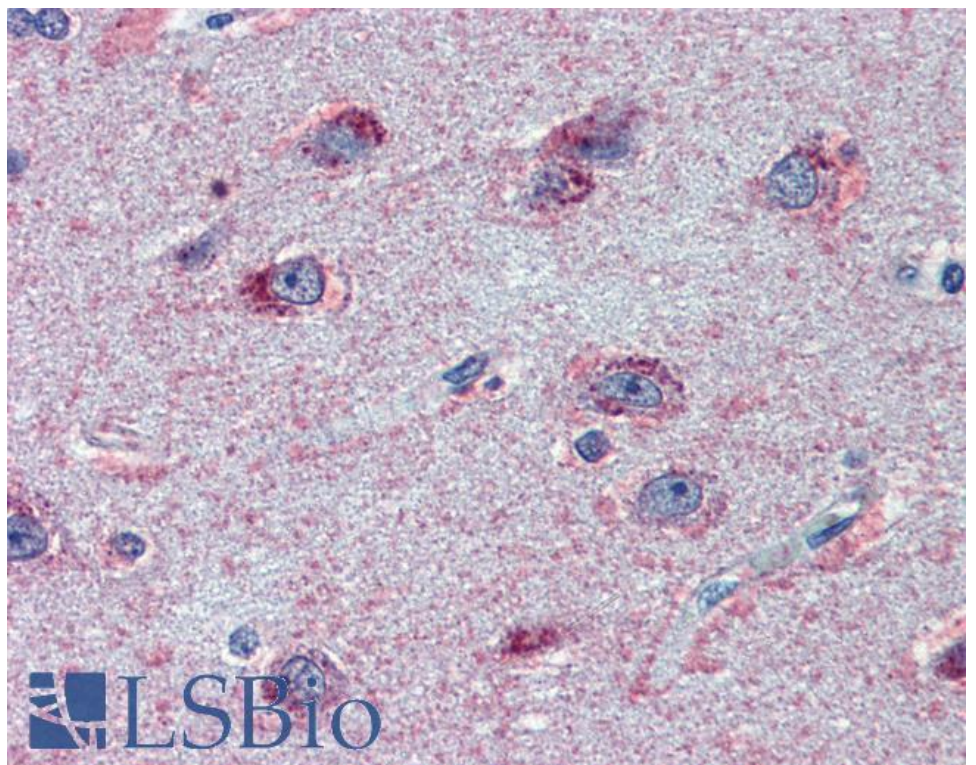
### Species Reactivity

**Tested:** Human

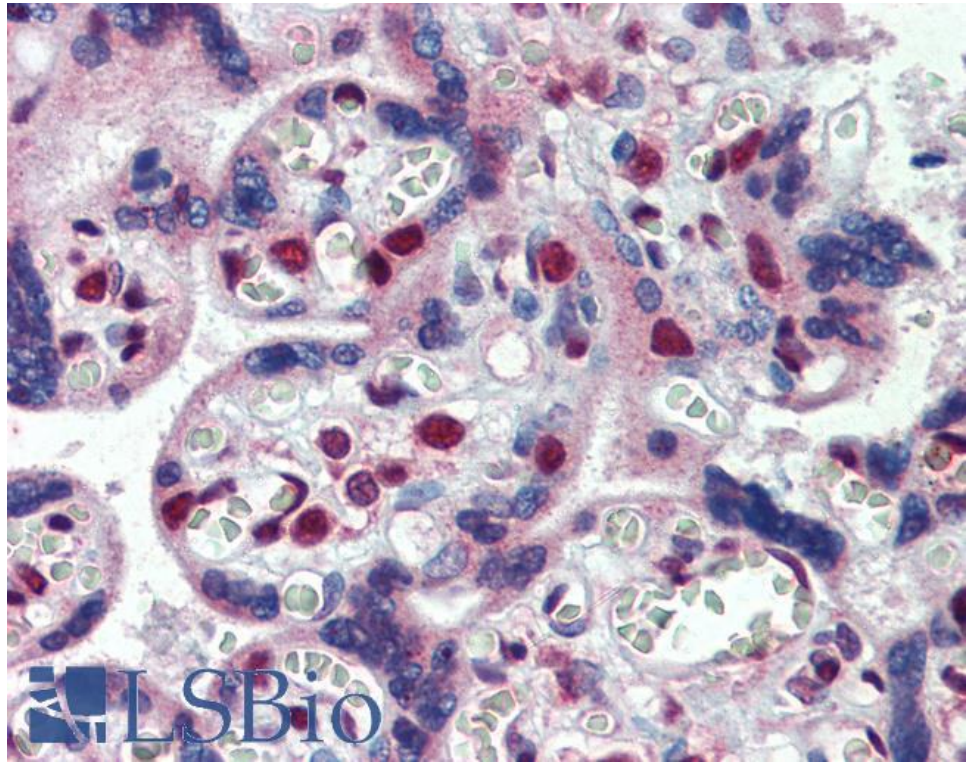
**Expected from sequence similarity:** Human, Rat



EB09362 (0.3 $\mu$ g/ml) staining of Kelly lysate (35 $\mu$ g protein in RIPA buffer). Primary incubation was 1 hour. Detected by chemiluminescence.



EB09362 (2.5 $\mu$ g/ml) staining of paraffin embedded Human Cortex. Steamed antigen retrieval with citrate buffer pH 6, AP-staining.



EB09362 (2.5µg/ml) staining of paraffin embedded Human Placenta. Steamed antigen retrieval with citrate buffer pH 6, AP-staining.