



## UK Office

### Everest Biotech Ltd

Cherwell Innovation Centre  
77 Heyford Park  
Upper Heyford  
Oxfordshire  
OX25 5HD  
UK

Enquiries:

[info@everestbiotech.com](mailto:info@everestbiotech.com)

Sales:

[sales@everestbiotech.com](mailto:sales@everestbiotech.com)

Tech support:

[support@everestbiotech.com](mailto:support@everestbiotech.com)

Tel: +44 (0)1869 238326

Fax: +44 (0)1869 238327

## US Office

### Everest Biotech c/o Abcore

405 Maple Street, Suite A106  
Ramona,  
CA 92065  
USA

Inquiries:

[info@everestbiotech.com](mailto:info@everestbiotech.com)

Sales:

[usasales@everestbiotech.com](mailto:usasales@everestbiotech.com)

Tech support:

[support@everestbiotech.com](mailto:support@everestbiotech.com)

Tel: 888-320-4628 (toll-free)

Fax: 888-841-9041

[www.everestbiotech.com](http://www.everestbiotech.com)

**Research Use Only. Not for  
diagnostic or therapeutic use.**

## EB06000 - Goat Anti-FOXA2 / HNF3B Antibody

Size: 100µg specific antibody in 200µl



### Target Protein

**Principal Names:** FOXA2, HNF3B, forkhead box A2, TCF3B, MGC19807, hepatic nuclear factor-3-beta, hepatocyte nuclear factor 3, beta, forkhead box protein A2, HNF-3B, HNF-3-beta, TCF-3B, transcription factor 3B

**Official Symbol:** FOXA2

**Accession Number(s):** NP\_068556.2; NP\_710141.1

**Human GeneID(s):** [3170](#)

**Non-Human GeneID(s):** 15376 (mouse), 25099 (rat)

**Important Comments:** This antibody is expected to recognise both reported isoforms: NP\_068556.2; NP\_710141.1

### Immunogen

Peptide with sequence C-GVYSRPIMNSS, from the C Terminus of the protein sequence according to NP\_068556.2; NP\_710141.1.

Please note the [peptide](#) is available for sale.

### Purification and Storage

Purified from goat serum by ammonium sulphate precipitation followed by antigen affinity chromatography using the immunizing peptide.

Supplied at 0.5 mg/ml in Tris saline, 0.02% sodium azide, pH7.3 with 0.5% bovine serum albumin.

Aliquot and store at -20°C. Minimize freezing and thawing.

### Applications Tested

**Peptide ELISA:** antibody detection limit dilution 1:4000.

**Western blot:** Approx 60kDa band observed in Human Liver and Rat Lung lysates (calculated MW of 48.3kDa according to Human NP\_710141.1 and 48.5kDa according to Rat NP\_036875.1). The observed molecular weight corresponds to earlier findings in literature (Wang et al, J Biol Chem. 2002 May 17;277(20):17564-70.; PMID: 11875061).

Recommended concentration: 1-3µg/ml. Primary incubation was 1 hour. Preliminary testing was unsuccessful on Mouse Liver and Lung for this particular batch.

**IHC:** In paraffin embedded Human Prostate shows nuclear staining in the secretory cells of the gland. Recommended concentration: 4-8µg/ml.

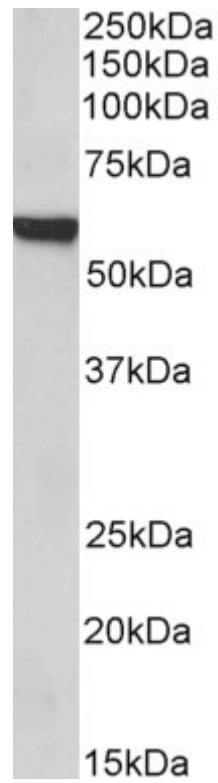
### Species Reactivity

**Tested:** Human, Rat

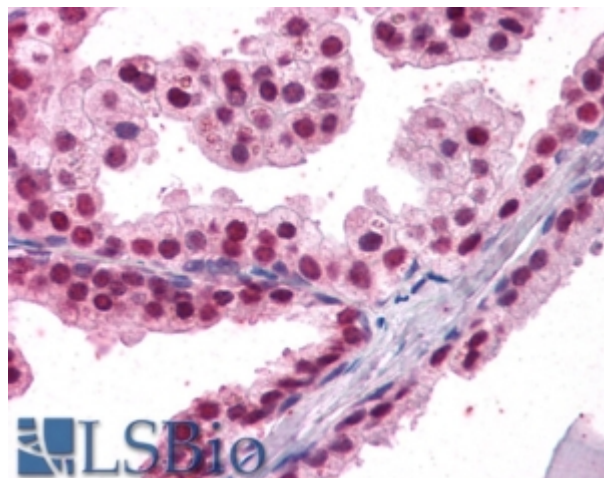
**Expected from sequence similarity:** Human, Mouse, Rat



EB06000 (1 $\mu$ g/ml) staining of Human Liver lysate (35 $\mu$ g protein in RIPA buffer). Detected by chemiluminescence.



EB06000 (1 $\mu$ g/ml) staining of Rat Lung lysate (35 $\mu$ g protein in RIPA buffer). Detected by chemiluminescence



EB06000 (3.8µg/ml) staining of paraffin embedded Human Prostate. Steamed antigen retrieval with citrate buffer pH 6, AP-staining.