



## International Office

### Everest Biotech Ltd

Vector Laboratories, Inc.  
6737 Mowry Ave  
Newark, CA 94560  
United States

Customer Service:

[customerservice@vectorlabs.com](mailto:customerservice@vectorlabs.com)

Technical Service:

[technical@vectorlabs.com](mailto:technical@vectorlabs.com)

Tel: +1 (800) 227-6666

[www.everestbiotech.com](http://www.everestbiotech.com)

**Research Use Only. Not for  
diagnostic or therapeutic use.**

## EB06000-B - Goat Anti-FOXA2 / HNF3B, Biotinylated Antibody

Size: 100µg specific antibody in 200µl



### Target Protein

**Principal Names:** FOXA2, forkhead box A2, HNF3B, TCF3B, HNF-3-beta, HNF-3B, TCF-3B, forkhead box protein A2, hepatic nuclear factor-3-beta, hepatocyte nuclear factor 3, beta, transcription factor 3B, MGC19807

**Official Symbol:** FOXA2

**Accession Number(s):** NP\_068556.2; NP\_710141.1;

**Human GeneID(s):** [3170](#)

**Non-Human GeneID(s):** 15376 (mouse), 25099 (rat)

**Important Comments:** This antibody is expected to recognise both reported isoforms: NP\_068556.2; NP\_710141.1.

### Immunogen

Peptide with sequence C-GVYSRPIMNSS., from the C Terminus of the protein sequence according to NP\_068556.2; NP\_710141.1;.

Please note the [peptide](#) is available for sale.

### Purification and Storage

Purified from goat serum by ammonium sulphate precipitation followed by antigen affinity chromatography using the immunizing peptide.

Supplied at 0.5 mg/ml in Tris saline, 0.02% sodium azide, pH7.3 with 0.5% bovine serum albumin.

Aliquot and store at -20°C. Minimize freezing and thawing.

### Applications Tested

**Peptide ELISA:** antibody detection limit dilution 1:4000.

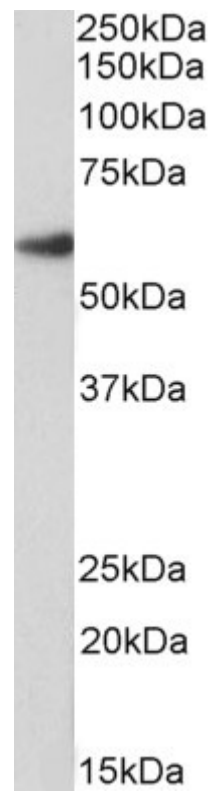
**Western blot:** Approx 60kDa band observed in Rat Lung lysates (calculated MW of 48.3kDa according to Human NP\_710141.1 and 48.5kDa according to Rat NP\_036875.1).

The observed molecular weight corresponds to earlier findings in literature (Wang et al, J Biol Chem. 2002 May 17;277(20):17564-70.; PMID: 11875061). See non-biotinylated parental product's datasheet for further QC data. Recommended concentration: 1-3µg/ml.

### Species Reactivity

**Tested:** Human, Rat

**Expected from sequence similarity:** Human



Biotinylated EB06000 (1.5µg/ml) staining of Rat Lung lysate (35µg protein in RIPA buffer), exactly mirroring its parental non-biotinylated product. Primary incubation was 1 hour. Detected by chemiluminescence, using streptavidin-HRP and using NAP blocker as a substitute for skimmed milk.