



## UK Office

### Everest Biotech Ltd

Cherwell Innovation Centre  
77 Heyford Park  
Upper Heyford  
Oxfordshire  
OX25 5HD  
UK

Enquiries:

[info@everestbiotech.com](mailto:info@everestbiotech.com)

Sales:

[sales@everestbiotech.com](mailto:sales@everestbiotech.com)

Tech support:

[support@everestbiotech.com](mailto:support@everestbiotech.com)

Tel: +44 (0)1869 238326

[www.everestbiotech.com](http://www.everestbiotech.com)

**Research Use Only. Not for  
diagnostic or therapeutic use.**

## EB06006 - Goat Anti-FOXC1 (C Term) Antibody

Size: 100µg specific antibody in 200µl



### Target Protein

**Principal Names:** FOXC1, forkhead box C1, ARA, IGDA, IHG1, FKHL7, IRID1, FREAC3, iridogoniodysgenesis type 1, forkhead (Drosophila)-like 7, forkhead-related activator 3, Forkhead, drosophila, homolog-like 7, FREAC-3, RIEG3, forkhead/winged helix-like transcription factor 7, myeloid factor-delta

**Official Symbol:** FOXC1

**Accession Number(s):** NP\_001444.2

**Human GeneID(s):** [2296](#)

**Non-Human GeneID(s):** 17300 (mouse)

### Immunogen

Peptide with sequence RTSGAFVYDCSKF, from the C Terminus of the protein sequence according to NP\_001444.2.

Please note the [peptide](#) is available for sale.

### Purification and Storage

Purified from goat serum by ammonium sulphate precipitation followed by antigen affinity chromatography using the immunizing peptide.

Supplied at 0.5 mg/ml in Tris saline, 0.02% sodium azide, pH7.3 with 0.5% bovine serum albumin.

Aliquot and store at -20°C. Minimize freezing and thawing.

### Applications Tested

**Peptide ELISA:** antibody detection limit dilution 1:32000.

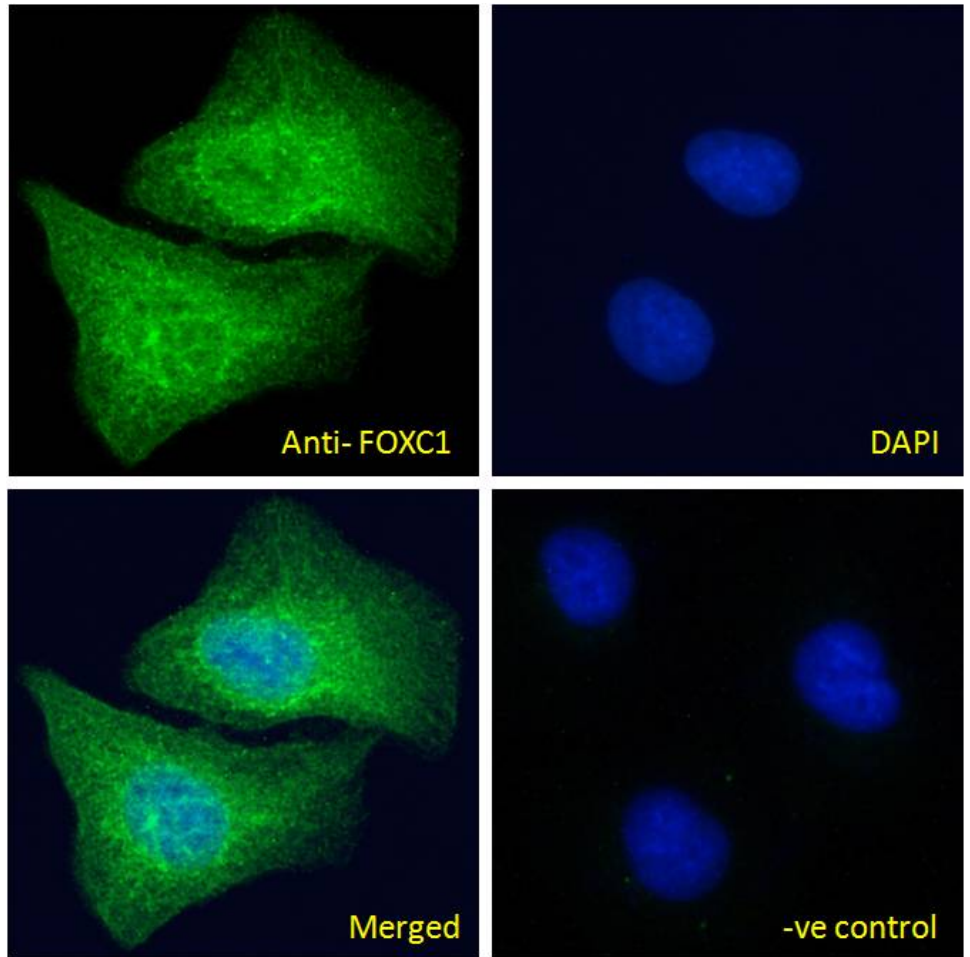
**Immunofluorescence:** Strong expression of the protein seen in the cytoplasm and nucleus of U2OS cells. Recommended concentration: 10µg/ml.

**Flow Cytometry:** Flow cytometric analysis of HEK293 cells. Recommended concentration: 10ug/ml.

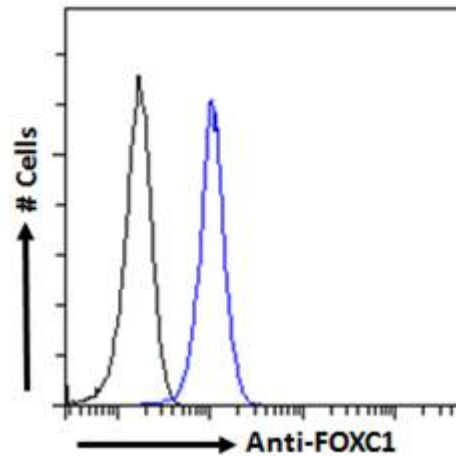
### Species Reactivity

**Tested:** Human

**Expected from sequence similarity:** Human, Mouse, Rat



EB06006 Immunofluorescence analysis of paraformaldehyde fixed U2OS cells, permeabilized with 0.15% Triton. Primary incubation 1hr (10ug/ml) followed by Alexa Fluor 488 secondary antibody (2ug/ml), showing nuclear and cytoplasmic staining. The nuclear stain is DAPI (blue). Negative control: Unimmunized goat IgG (10ug/ml) followed by Alexa Fluor 488 secondary antibody (2ug/ml).



EB06006 Flow cytometric analysis of paraformaldehyde fixed HEK293 cells (blue line), permeabilized with 0.5% Triton. Primary incubation 1hr (10ug/ml) followed by Alexa Fluor 488 secondary antibody (2ug/ml). IgG control: Unimmunized goat IgG (black line) followed by Alexa Fluor 488 secondary antibody.