



International Office

Everest Biotech Ltd

Vector Laboratories, Inc.
6737 Mowry Ave
Newark, CA 94560
United States

Customer Service:

customerservice@vectorlabs.com

Technical Service:

technical@vectorlabs.com

Tel: +1 (800) 227-6666

www.everestbiotech.com

**Research Use Only. Not for
diagnostic or therapeutic use.**

EB06011 - Goat Anti-FOXE1 / TTF2 Antibody

Size: 100µg specific antibody in 200µl



Target Protein

Principal Names: FOXE1, TTF2, forkhead box E1 (thyroid transcription factor 2), FOXE2, HFKH4, HFKL5, TITF2, TTF-2, FKHL15, forkhead (Drosophila)-like 15, forkhead box E1, forkhead box E2, thyroid transcription factor-2, Forkhead, drosophila, homolog-like 15

Official Symbol: FOXE1

Accession Number(s): NP_004464.2

Human GeneID(s): [2304](#)

Immunogen

Peptide with sequence C-AYPGGIDRFVSAM, from the C Terminus of the protein sequence according to NP_004464.2.

Please note the [peptide](#) is available for sale.

Purification and Storage

Purified from goat serum by ammonium sulphate precipitation followed by antigen affinity chromatography using the immunizing peptide.

Supplied at 0.5 mg/ml in Tris saline, 0.02% sodium azide, pH7.3 with 0.5% bovine serum albumin.

Aliquot and store at -20°C. Minimize freezing and thawing.

Applications Tested

Peptide ELISA: antibody detection limit dilution 1:8000.

Western blot: Preliminary experiments gave an approx 70kDa band in Human Thymus and Thyroid Gland lysates after 0.3µg/ml antibody staining. Please note that currently we cannot find an explanation in the literature for the band we observe given the calculated size of 38.1kDa according to NP_004464.2. The 70kDa band was successfully blocked by incubation with the immunizing peptide.

IHC: In paraffin embedded Human Thyroid Gland shows nuclear staining in thyrocytes.

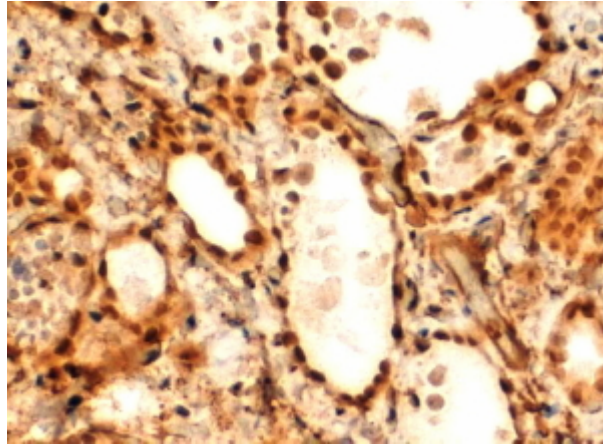
Recommended concentration: 2-4µg/ml. Paraffin embedded Human Testis.

Recommended concentration: 5µg/ml.

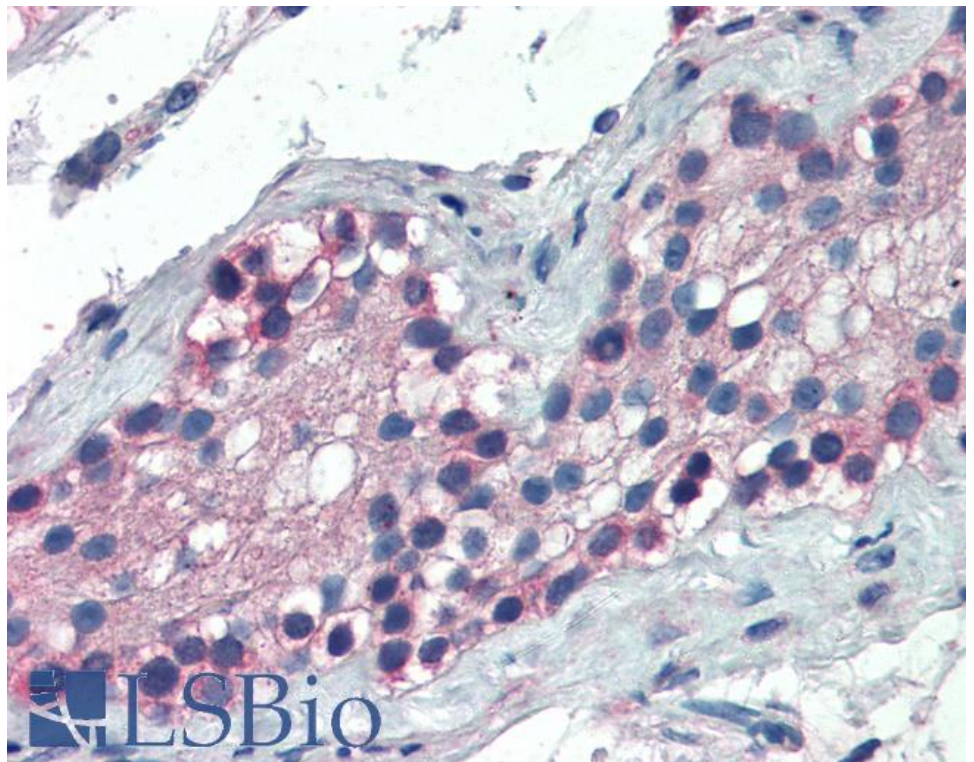
Species Reactivity

Tested: Human

Expected from sequence similarity: Human



EB06011 (2 μ g/ml) staining of paraffin embedded Human Thyroid Gland. Steamed antigen retrieval with Tris/EDTA buffer pH 9, HRP-staining.



EB06011 (5 μ g/ml) staining of paraffin embedded Human Testis. Steamed antigen retrieval with Tris/EDTA buffer pH 9, AP-staining.