



## UK Office

### Everest Biotech Ltd

Cherwell Innovation Centre  
77 Heyford Park  
Upper Heyford  
Oxfordshire  
OX25 5HD  
UK

Enquiries:

[info@everestbiotech.com](mailto:info@everestbiotech.com)

Sales:

[sales@everestbiotech.com](mailto:sales@everestbiotech.com)

Tech support:

[support@everestbiotech.com](mailto:support@everestbiotech.com)

Tel: +44 (0)1869 238326

Fax: +44 (0)1869 238327

## US Office

### Everest Biotech c/o Abcore

405 Maple Street, Suite A106  
Ramona,  
CA 92065  
USA

Inquiries:

[info@everestbiotech.com](mailto:info@everestbiotech.com)

Sales:

[usasales@everestbiotech.com](mailto:usasales@everestbiotech.com)

Tech support:

[support@everestbiotech.com](mailto:support@everestbiotech.com)

Tel: 888-320-4628 (toll-free)

Fax: 888-841-9041

[www.everestbiotech.com](http://www.everestbiotech.com)

**Research Use Only. Not for  
diagnostic or therapeutic use.**

## EB06011 - Goat Anti-FOXE1 / TTF2 Antibody

Size: 100µg specific antibody in 200µl



### Target Protein

**Principal Names:** FOXE1, TTF2, forkhead box E1 (thyroid transcription factor 2), FOXE2, HFKH4, HFKL5, TITF2, TTF-2, FKHL15, forkhead (Drosophila)-like 15, forkhead box E1, forkhead box E2, thyroid transcription factor-2, Forkhead, drosophila, homolog-like 15

**Official Symbol:** FOXE1

**Accession Number(s):** NP\_004464.2

**Human GeneID(s):** [2304](#)

### Immunogen

Peptide with sequence C-AYPGGIDRFVSAM, from the C Terminus of the protein sequence according to NP\_004464.2.

Please note the [peptide](#) is available for sale.

### Purification and Storage

Purified from goat serum by ammonium sulphate precipitation followed by antigen affinity chromatography using the immunizing peptide.

Supplied at 0.5 mg/ml in Tris saline, 0.02% sodium azide, pH7.3 with 0.5% bovine serum albumin.

Aliquot and store at -20°C. Minimize freezing and thawing.

### Applications Tested

**Peptide ELISA:** antibody detection limit dilution 1:8000.

**Western blot:** Preliminary experiments gave an approx 70kDa band in Human Thymus and Thyroid Gland lysates after 0.3µg/ml antibody staining. Please note that currently we cannot find an explanation in the literature for the band we observe given the calculated size of 38.1kDa according to NP\_004464.2. The 70kDa band was successfully blocked by incubation with the immunizing peptide.

**IHC:** In paraffin embedded Human Thyroid Gland shows nuclear staining in thyrocytes.

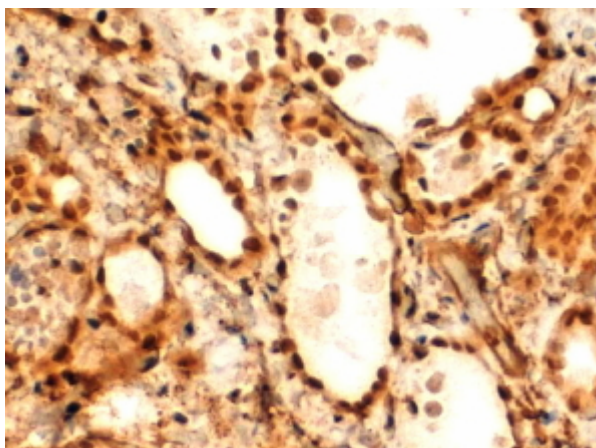
Recommended concentration: 2-4µg/ml. Paraffin embedded Human Testis.

Recommended concentration: 5µg/ml.

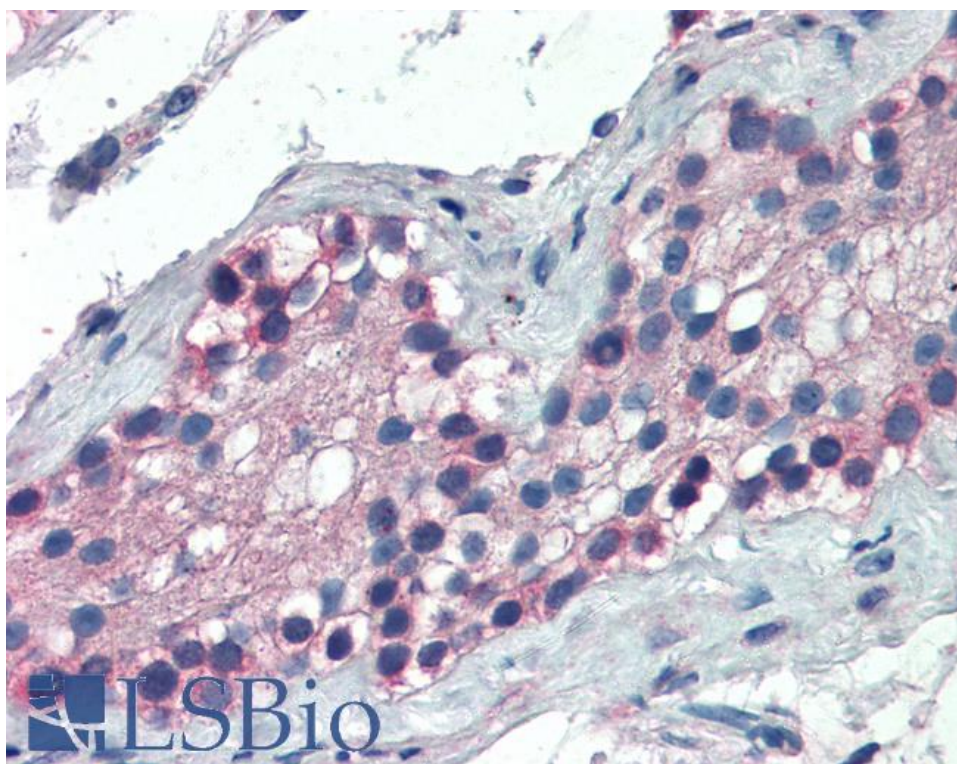
### Species Reactivity

**Tested:** Human

**Expected from sequence similarity:** Human



EB06011 (2 $\mu$ g/ml) staining of paraffin embedded Human Thyroid Gland. Steamed antigen retrieval with Tris/EDTA buffer pH 9, HRP-staining.



EB06011 (5 $\mu$ g/ml) staining of paraffin embedded Human Testis. Steamed antigen retrieval with Tris/EDTA buffer pH 9, AP-staining.