



International Office

Everest Biotech Ltd

Vector Laboratories, Inc.
6737 Mowry Ave
Newark, CA 94560
United States

Customer Service:

customerservice@vectorlabs.com

Technical Service:

technical@vectorlabs.com

Tel: +1 (800) 227-6666

www.everestbiotech.com

**Research Use Only. Not for
diagnostic or therapeutic use.**

EB05608-T - Goat Anti-FOXG1 / BF2 Antibody - Trial

Size: 20µg specific antibody in 40µl



Target Protein

Principal Names: forkhead box G1, BF1, BF2, FHL3, FKH2, FKHL1, FKHL2, FKHL3, FKHL4, FOXG1A, FOXG1B, FOXG1C, HBF-1, HBF-2, HBF-3, HBF-G2, HBF2, HFK1, HFK2, HFK3, KHL2, QIN, OTTHUMP00000178764, brain factor 2, forkhead box G1A, forkhead box G1B, forkhead box G1C, forkhead, drosophila, homolog-like 2, forkhead-like 1, forkhead-like 2, forkhead-like 3, forkhead-like 4, oncogene QIN

Official Symbol: FOXG1

Accession Number(s): NP_005240.3

Human GeneID(s): [2290](#)

Non-Human GeneID(s): 15228 (mouse), 24370 (rat)

Immunogen

Peptide with sequence C-HQNQGSSSNPLIH, from the C Terminus of the protein sequence according to NP_005240.3.

Please note the [peptide](#) is available for sale.

Purification and Storage

Purified from goat serum by ammonium sulphate precipitation followed by antigen affinity chromatography using the immunizing peptide.

Supplied at 0.5 mg/ml in Tris saline, 0.02% sodium azide, pH7.3 with 0.5% bovine serum albumin.

Aliquot and store at -20°C. Minimize freezing and thawing.

Applications Tested

Peptide ELISA: antibody detection limit dilution 1:64000.

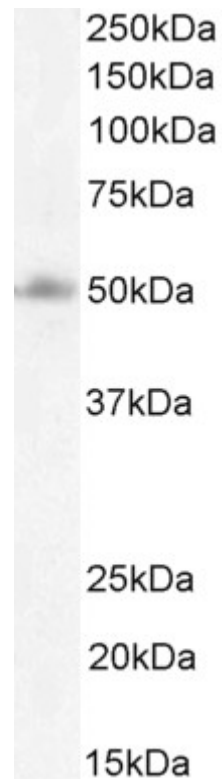
Western blot: Approx. 48kDa band observed in lysates of cell line U251, and approx. 48-50kDa in Human Cerebellum and Cerebral Cortex lysates (calculated MW of 52.4kDa according to NP_005240.3 (FOXG1B), and 50.5kDa according to CAA55038.1 (FOXG1A). An additional band at 70-75kDa was observed in some lysates and was successfully blocked by incubation with the immunizing peptide, Recommended concentration: 0.3-1/ml. Primary incubation 1 hour at room temperature.

Flow Cytometry: Flow cytometric analysis of U251 cells. Recommended concentration: 10ug/ml.

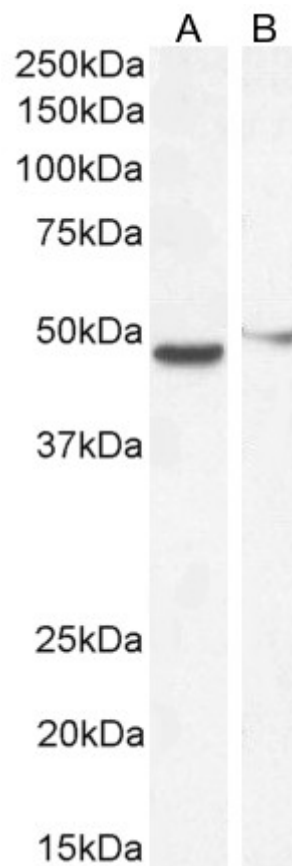
Species Reactivity

Tested: Human

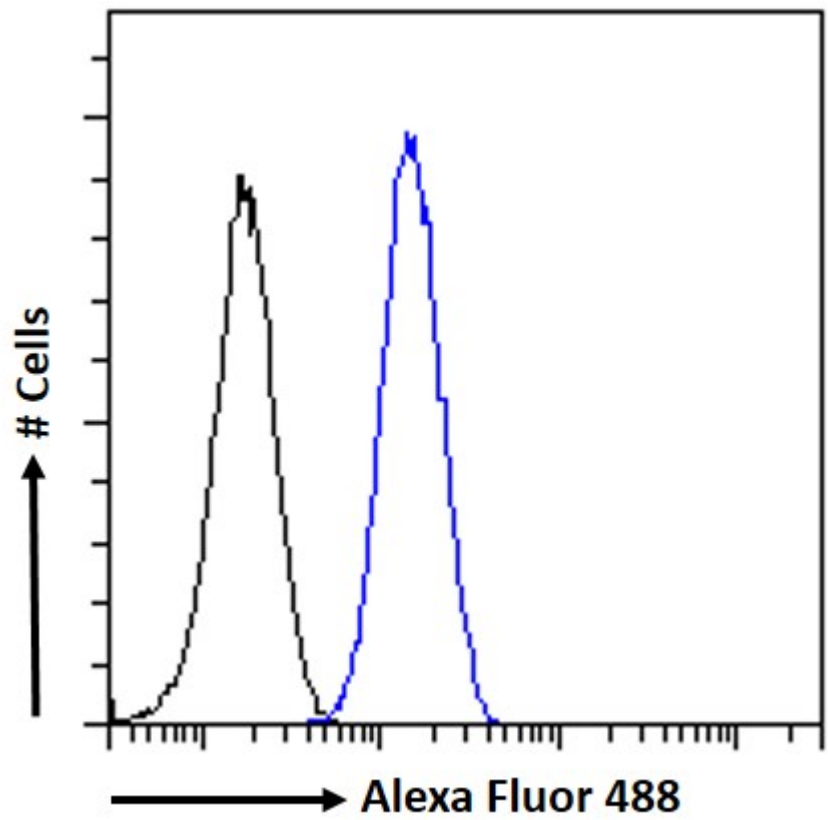
Expected from sequence similarity: Human, Mouse, Rat, Dog, Cow



EB05608 (1µg/ml) staining of U251 cell lysate (35µg protein in RIPA buffer). Detected by chemiluminescence.



EB05608 (0.5µg/ml) staining of Human Cerebellum (A) and Cerebral Cortex (B) lysate (35µg protein in RIPA buffer). Detected by chemiluminescence.



EB05608 Flow cytometric analysis of paraformaldehyde fixed U251 cells (blue line), permeabilized with 0.5% Triton. Primary incubation 1hr (10ug/ml) followed by Alexa Fluor 488 secondary antibody (1ug/ml). IgG control: Unimmunized goat IgG (black line) followed by Alexa Fluor 488 secondary antibody.