



UK Office

Everest Biotech Ltd

Cherwell Innovation Centre
77 Heyford Park
Upper Heyford
Oxfordshire
OX25 5HD
UK

Enquiries:

info@everestbiotech.com

Sales:

sales@everestbiotech.com

Tech support:

support@everestbiotech.com

Tel: +44 (0)1869 238326

Fax: +44 (0)1869 238327

US Office

Everest Biotech c/o Abcore

405 Maple Street, Suite A106
Ramona,
CA 92065
USA

Inquiries:

info@everestbiotech.com

Sales:

usasales@everestbiotech.com

Tech support:

support@everestbiotech.com

Tel: 888-320-4628 (toll-free)

Fax: 888-841-9041

www.everestbiotech.com

**Research Use Only. Not for
diagnostic or therapeutic use.**

EB05608-T - Goat Anti-FOXG1 / BF2 Antibody - Trial

Size: 20µg specific antibody in 40µl



Target Protein

Principal Names: forkhead box G1, BF1, BF2, FHL3, FKH2, FKHL1, FKHL2, FKHL3, FKHL4, FOXG1A, FOXG1B, FOXG1C, HBF-1, HBF-2, HBF-3, HBF-G2, HBF2, HFK1, HFK2, HFK3, KHL2, QIN, OTTHUMP00000178764, brain factor 2, forkhead box G1A, forkhead box G1B, forkhead box G1C, forkhead, drosophila, homolog-like 2, forkhead-like 1, forkhead-like 2, forkhead-like 3, forkhead-like 4, oncogene QIN

Official Symbol: FOXG1

Accession Number(s): NP_005240.3

Human GeneID(s): [2290](#)

Non-Human GeneID(s): 15228 (mouse), 24370 (rat)

Immunogen

Peptide with sequence C-HQNQGSSSNPLIH, from the C Terminus of the protein sequence according to NP_005240.3.

Please note the [peptide](#) is available for sale.

Purification and Storage

Purified from goat serum by ammonium sulphate precipitation followed by antigen affinity chromatography using the immunizing peptide.

Supplied at 0.5 mg/ml in Tris saline, 0.02% sodium azide, pH7.3 with 0.5% bovine serum albumin.

Aliquot and store at -20°C. Minimize freezing and thawing.

Applications Tested

Peptide ELISA: antibody detection limit dilution 1:64000.

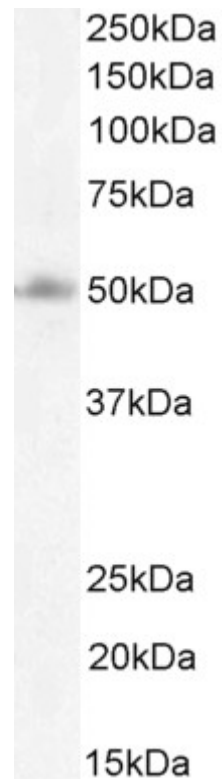
Western blot: Approx. 48kDa band observed in lysates of cell line U251, and approx. 48-50kDa in Human Cerebellum and Cerebral Cortex lysates (calculated MW of 52.4kDa according to NP_005240.3 (FOXG1B), and 50.5kDa according to CAA55038.1 (FOXG1A). An additional band at 70-75kDa was observed in some lysates and was successfully blocked by incubation with the immunizing peptide, Recommended concentration: 0.3-1/ml. Primary incubation 1 hour at room temperature.

Flow Cytometry: Flow cytometric analysis of U251 cells. Recommended concentration: 10ug/ml.

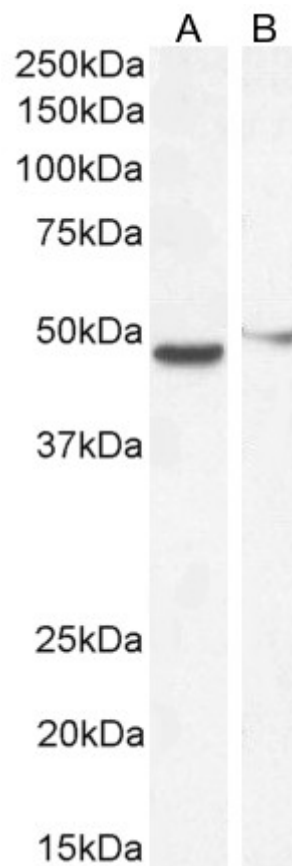
Species Reactivity

Tested: Human

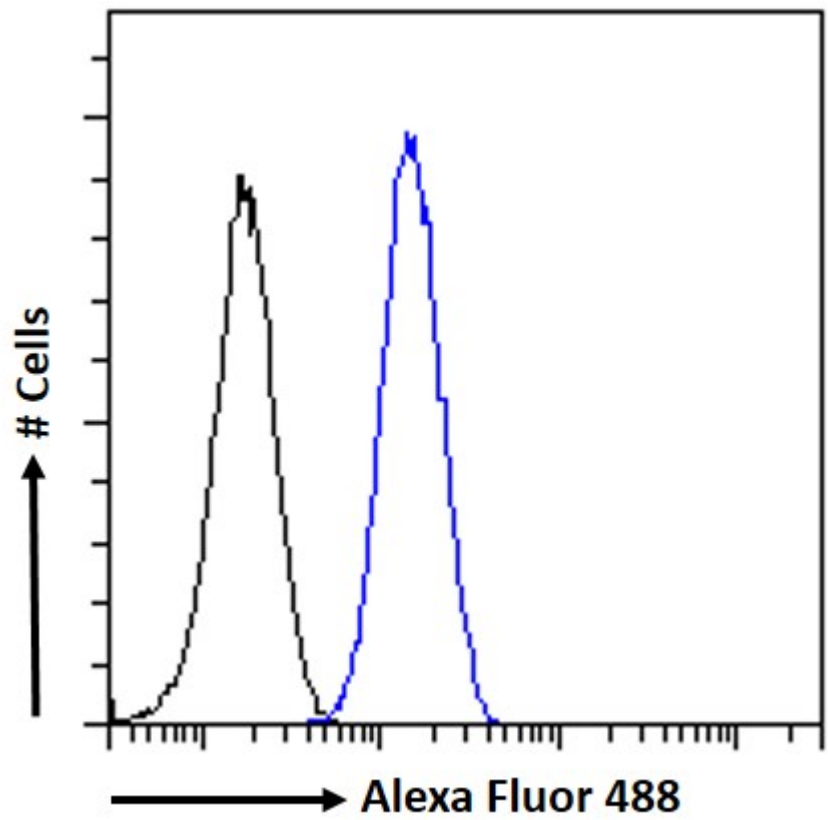
Expected from sequence similarity: Human, Mouse, Rat, Dog, Cow



EB05608 (1 μ g/ml) staining of U251 cell lysate (35 μ g protein in RIPA buffer). Detected by chemiluminescence.



EB05608 (0.5 μ g/ml) staining of Human Cerebellum (A) and Cerebral Cortex (B) lysate (35 μ g protein in RIPA buffer). Detected by chemiluminescence.



EB05608 Flow cytometric analysis of paraformaldehyde fixed U251 cells (blue line), permeabilized with 0.5% Triton. Primary incubation 1hr (10ug/ml) followed by Alexa Fluor 488 secondary antibody (1ug/ml). IgG control: Unimmunized goat IgG (black line) followed by Alexa Fluor 488 secondary antibody.