



## UK Office

### Everest Biotech Ltd

Cherwell Innovation Centre  
77 Heyford Park  
Upper Heyford  
Oxfordshire  
OX25 5HD  
UK

Enquiries:

[info@everestbiotech.com](mailto:info@everestbiotech.com)

Sales:

[sales@everestbiotech.com](mailto:sales@everestbiotech.com)

Tech support:

[support@everestbiotech.com](mailto:support@everestbiotech.com)

Tel: +44 (0)1869 238326

Fax: +44 (0)1869 238327

## US Office

### Everest Biotech c/o Abcore

405 Maple Street, Suite A106  
Ramona,  
CA 92065  
USA

Inquiries:

[info@everestbiotech.com](mailto:info@everestbiotech.com)

Sales:

[usasales@everestbiotech.com](mailto:usasales@everestbiotech.com)

Tech support:

[support@everestbiotech.com](mailto:support@everestbiotech.com)

Tel: 888-320-4628 (toll-free)

Fax: 888-841-9041

[www.everestbiotech.com](http://www.everestbiotech.com)

**Research Use Only. Not for  
diagnostic or therapeutic use.**

## EB06019 - Goat Anti-FOXI1 / FKHL10 Antibody

Size: 100µg specific antibody in 200µl



### Target Protein

**Principal Names:** FOXI1, forkhead box I1, HFH3, FKHL10, FREAC6, HNF-3/fork-head homolog-3, forkhead-related activator 6, forkhead (Drosophila)-like 10, Forkhead, drosophila, homolog-like 10, hepatocyte nuclear factor 3 forkhead homolog 3, FKHL10, MGC34197, forkhead-like 10

**Official Symbol:** FOXI1

**Accession Number(s):** NP\_036320.2; NP\_658982.1

**Human GeneID(s):** [2299](#)

**Important Comments:** This antibody is expected to recognise both reported human isoforms (NP\_036320.2; NP\_658982.1).

### Immunogen

Peptide with sequence C-TSGVLYPREGTEV, from the C Terminus of the protein sequence according to NP\_036320.2; NP\_658982.1.

Please note the [peptide](#) is available for sale.

### Purification and Storage

Purified from goat serum by ammonium sulphate precipitation followed by antigen affinity chromatography using the immunizing peptide.

Supplied at 0.5 mg/ml in Tris saline, 0.02% sodium azide, pH7.3 with 0.5% bovine serum albumin.

Aliquot and store at -20°C. Minimize freezing and thawing.

### Applications Tested

**Peptide ELISA:** antibody detection limit dilution 1:8000.

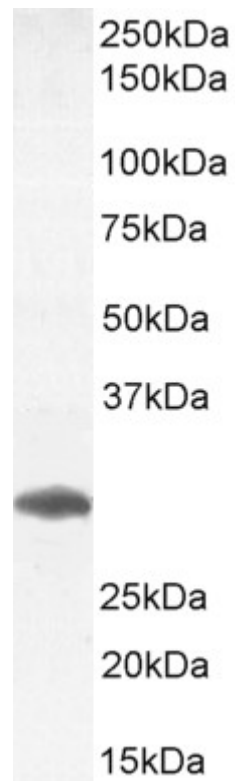
**Western blot:** Approx 30kDa band observed in Human Testis lysates and in preliminary testing of Human Breast lysate, and approx. 40kDa in preliminary testing of U251 and MCF7 cell lysate (calculated MW of 30.8kDa according to NP\_658982.1 and 41.0kDa according to NP\_036320.2). Recommended concentration: 1-3µg/ml. Primary incubation 1 hour at room temperature.

**IHC:** Paraffin embedded Human Kidney. Recommended concentration: 5-6µg/ml.

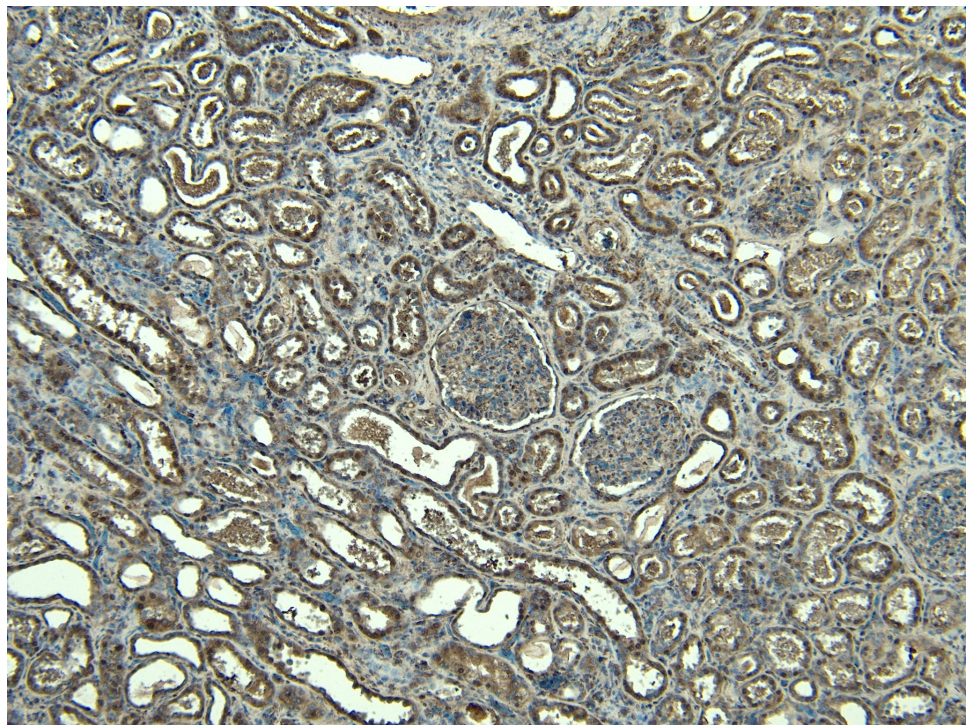
### Species Reactivity

**Tested:** Human

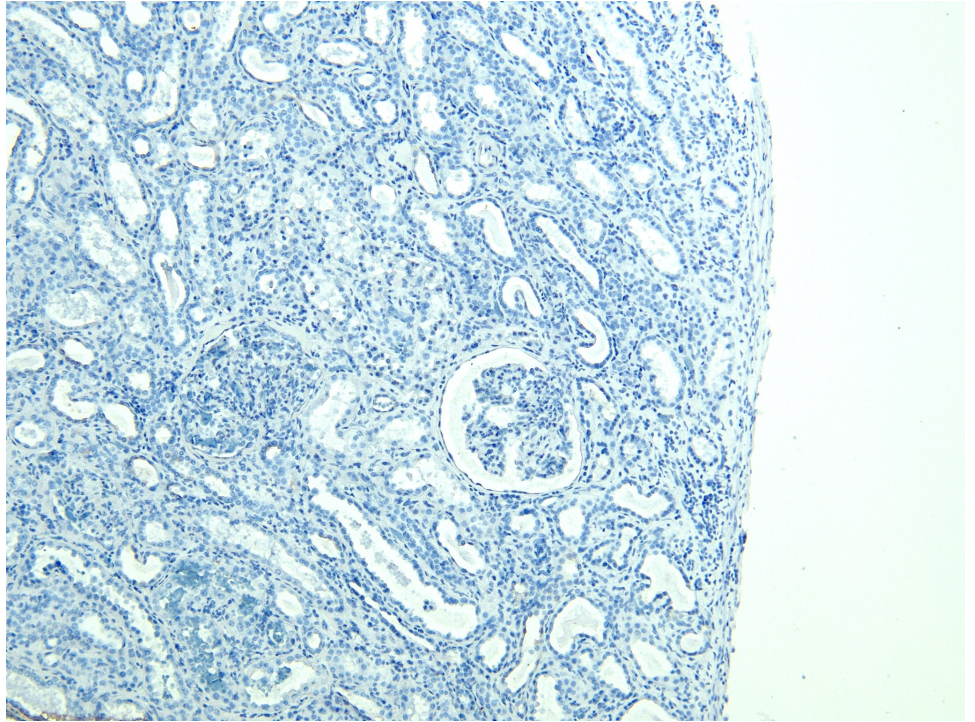
**Expected from sequence similarity:** Human



B06019 (1µg/ml) staining of Human Testes lysate (35µg protein in RIPA buffer). Detected by chemiluminescence.



EB06019 (6µg/ml) staining of paraffin embedded Human Kidney. Heat induced antigen retrieval with citrate buffer pH 6, HRP-staining.



EB06019 Negative Control showing staining of paraffin embedded Human Kidney, with no primary antibody.