



International Office

Everest Biotech Ltd

Vector Laboratories, Inc.
6737 Mowry Ave
Newark, CA 94560
United States

Customer Service:

customerservice@vectorlabs.com

Technical Service:

technical@vectorlabs.com

Tel: +1 (800) 227-6666

www.everestbiotech.com

**Research Use Only. Not for
diagnostic or therapeutic use.**

EB10760 - Goat Anti-Foxi3 (mouse) Antibody

Size: 100µg specific antibody in 200µl



Target Protein

Principal Names: Foxi3, forkhead box I3, forkhead box protein I3

Official Symbol: Foxi3

Accession Number(s): NP_001094934.1

Non-Human GeneID(s): 232077 (mouse), 502846 (rat)

Immunogen

Peptide with sequence C-RLRVSGKLEGDSPS, from the internal region of the protein sequence according to NP_001094934.1.

Please note the [peptide](#) is available for sale.

Purification and Storage

Purified from goat serum by ammonium sulphate precipitation followed by antigen affinity chromatography using the immunizing peptide.

Supplied at 0.5 mg/ml in Tris saline, 0.02% sodium azide, pH7.3 with 0.5% bovine serum albumin.

Aliquot and store at -20°C. Minimize freezing and thawing.

Applications Tested

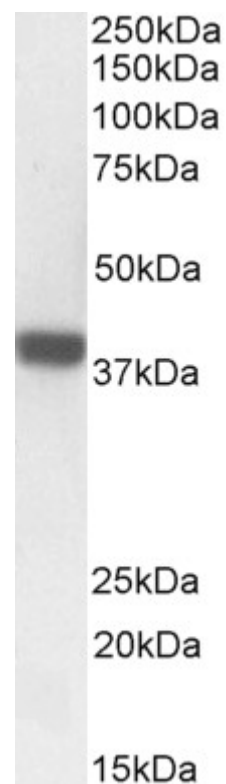
Peptide ELISA: antibody detection limit dilution 1:8000.

Western blot: Approx 37-38kDa band observed in Mouse and Rat Skin lysates (calculated MW of 42.0kDa according to Mouse NP_001094934.1 and 41.9kDa according to Rat NP_001102819.1). This band was successfully blocked by incubation with the immunizing peptide.. Recommended concentration: 1-3µg/ml. Primary incubation 1 hour at room temperature.

Species Reactivity

Tested: Mouse, Rat

Expected from sequence similarity: Mouse, Rat



EB10760 (1µg/ml) staining of Rat Skin lysate (35µg protein in RIPA buffer). Detected by chemiluminescence.



EB10760 (1µg/ml) staining of Mouse Skin lysate (A) + peptide (B) (35µg protein in RIPA buffer). Detected by chemiluminescence.