



## UK Office

### Everest Biotech Ltd

Cherwell Innovation Centre  
77 Heyford Park  
Upper Heyford  
Oxfordshire  
OX25 5HD  
UK

Enquiries:

[info@everestbiotech.com](mailto:info@everestbiotech.com)

Sales:

[sales@everestbiotech.com](mailto:sales@everestbiotech.com)

Tech support:

[support@everestbiotech.com](mailto:support@everestbiotech.com)

Tel: +44 (0)1869 238326

Fax: +44 (0)1869 238327

## US Office

### Everest Biotech c/o Abcore

405 Maple Street, Suite A106  
Ramona,  
CA 92065  
USA

Inquiries:

[info@everestbiotech.com](mailto:info@everestbiotech.com)

Sales:

[usasales@everestbiotech.com](mailto:usasales@everestbiotech.com)

Tech support:

[support@everestbiotech.com](mailto:support@everestbiotech.com)

Tel: 888-320-4628 (toll-free)

Fax: 888-841-9041

[www.everestbiotech.com](http://www.everestbiotech.com)

**Research Use Only. Not for  
diagnostic or therapeutic use.**

## EB10760 - Goat Anti-Foxi3 (mouse) Antibody

Size: 100µg specific antibody in 200µl



### Target Protein

**Principal Names:** Foxi3, forkhead box I3, forkhead box protein I3

**Official Symbol:** Foxi3

**Accession Number(s):** NP\_001094934.1

**Non-Human GeneID(s):** 232077 (mouse), 502846 (rat)

### Immunogen

Peptide with sequence C-RLRVSGKLEGDSPS, from the internal region of the protein sequence according to NP\_001094934.1.

Please note the [peptide](#) is available for sale.

### Purification and Storage

Purified from goat serum by ammonium sulphate precipitation followed by antigen affinity chromatography using the immunizing peptide.

Supplied at 0.5 mg/ml in Tris saline, 0.02% sodium azide, pH7.3 with 0.5% bovine serum albumin.

Aliquot and store at -20°C. Minimize freezing and thawing.

### Applications Tested

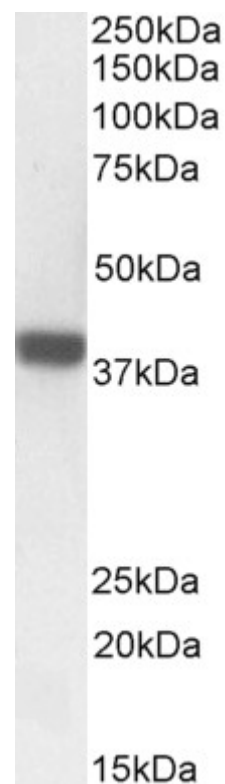
**Peptide ELISA:** antibody detection limit dilution 1:8000.

**Western blot:** Approx 37-38kDa band observed in Mouse and Rat Skin lysates (calculated MW of 42.0kDa according to Mouse NP\_001094934.1 and 41.9kDa according to Rat NP\_001102819.1). This band was successfully blocked by incubation with the immunizing peptide.. Recommended concentration: 1-3µg/ml. Primary incubation 1 hour at room temperature.

### Species Reactivity

**Tested:** Mouse, Rat

**Expected from sequence similarity:** Mouse, Rat



EB10760 (1µg/ml) staining of Rat Skin lysate (35µg protein in RIPA buffer). Detected by chemiluminescence.



EB10760 (1µg/ml) staining of Mouse Skin lysate (A) + peptide (B) (35µg protein in RIPA buffer). Detected by chemiluminescence.