



UK Office

Everest Biotech Ltd

Cherwell Innovation Centre
77 Heyford Park
Upper Heyford
Oxfordshire
OX25 5HD
UK

Enquiries:

info@everestbiotech.com

Sales:

sales@everestbiotech.com

Tech support:

support@everestbiotech.com

Tel: +44 (0)1869 238326

www.everestbiotech.com

**Research Use Only. Not for
diagnostic or therapeutic use.**

EB06033 - Goat Anti-FOXN2 / HTLF Antibody

Size: 100µg specific antibody in 200µl



Target Protein

Principal Names: forkhead box N2, FOXN2, HTLF, human T-cell leukemia virus enhancer factor, T-cell leukemia virus enhancer factor

Official Symbol: FOXN2

Accession Number(s): NP_002149.2

Human GeneID(s): [3344](#)

Immunogen

Peptide with sequence MCDPLDQLATRTQK, from the N Terminus of the protein sequence according to NP_002149.2.

Please note the [peptide](#) is available for sale.

Purification and Storage

Purified from goat serum by ammonium sulphate precipitation followed by antigen affinity chromatography using the immunizing peptide.

Supplied at 0.5 mg/ml in Tris saline, 0.02% sodium azide, pH7.3 with 0.5% bovine serum albumin.

Aliquot and store at -20°C. Minimize freezing and thawing.

Applications Tested

Peptide ELISA: antibody detection limit dilution 1:16000.

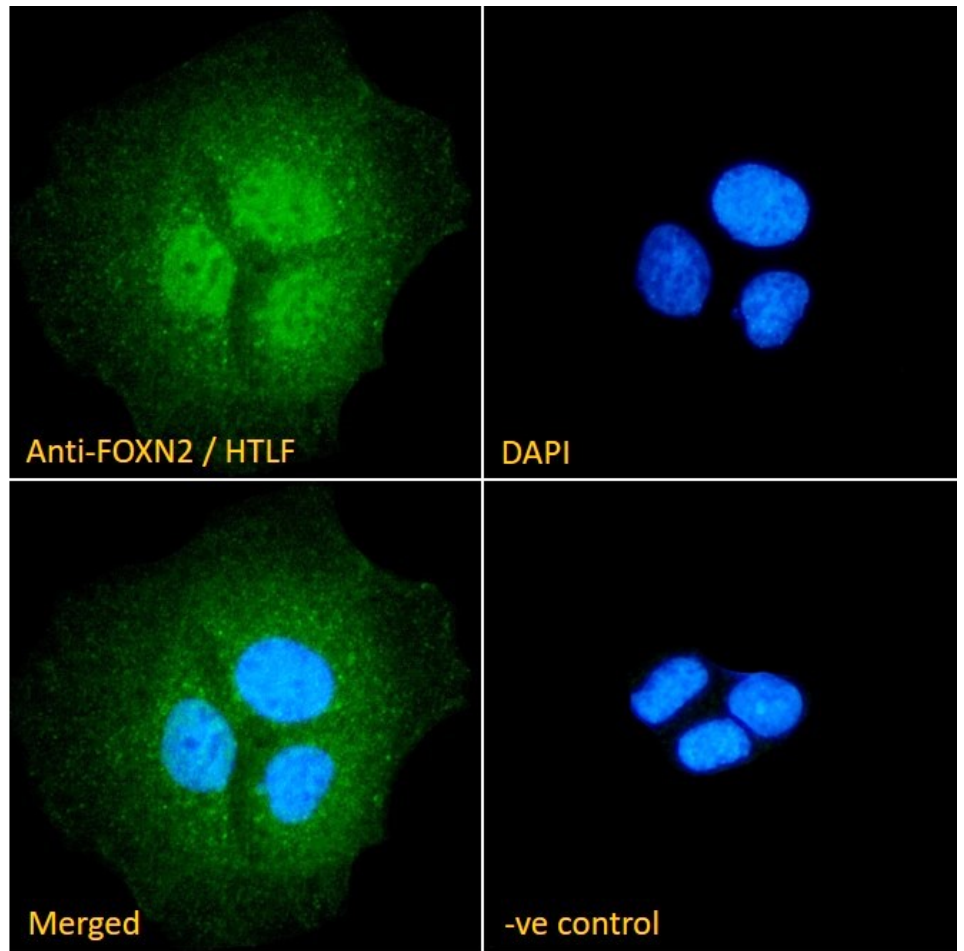
Western blot: Preliminary testing showed a band at approx. 40kDa in K562, Caco-2 and U251 cell lysate after 3µg/ml antibody staining (calculated MW of 37.7kDa according to NP_002149.2). Primary incubation 1 hour at room temperature.

Immunofluorescence: Strong expression of the protein seen in the nuclei of Caco-2 and U251 cells. Recommended concentration: 10µg/ml.

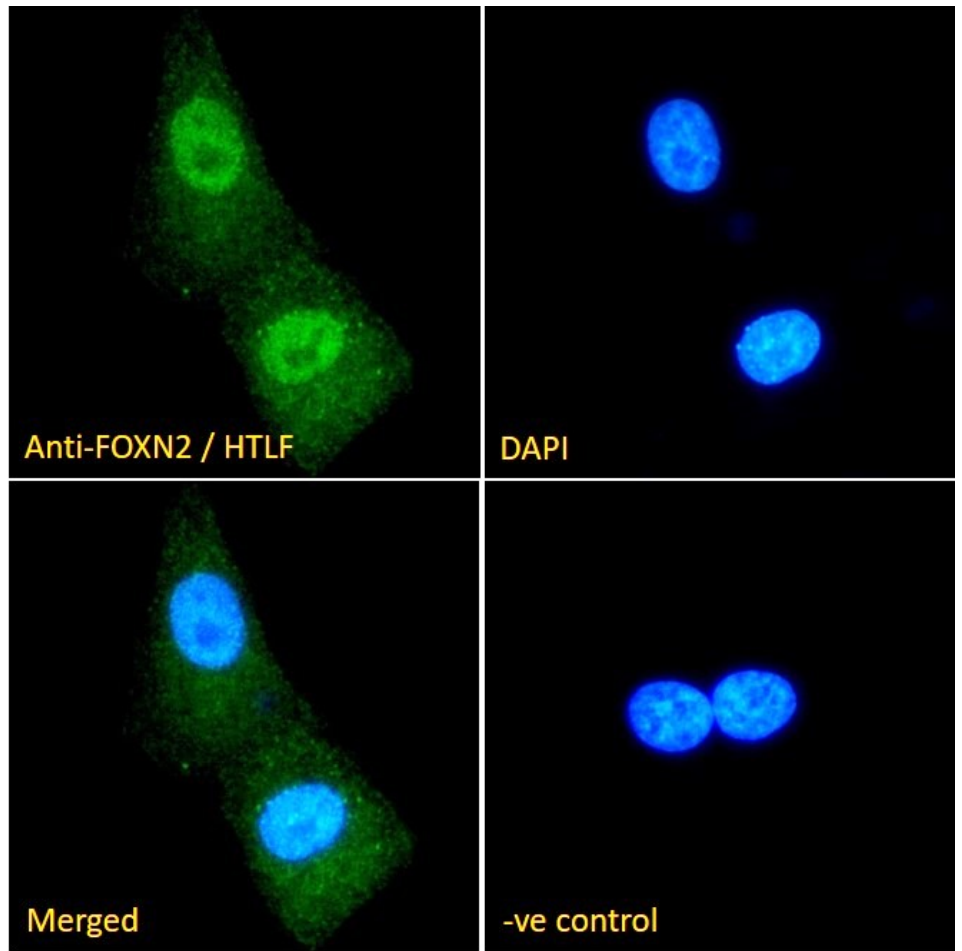
Species Reactivity

Tested: Human

Expected from sequence similarity: Human



EB06033 Immunofluorescence analysis of paraformaldehyde fixed Caco-2. Primary incubation 1hr (1:50 dilution) followed by Alexa Fluor® 488 secondary antibody (1:2000 dilution), showing cytoplasmic and nuclear staining. The nuclear stain is DAPI (blue). Negative control: Anti-Goat IgG followed by Alexa Fluor® 488 secondary antibody.



EB06033 Immunofluorescence analysis of paraformaldehyde fixed U251. Primary incubation 1hr (1:50 dilution) followed by Alexa Fluor® 488 secondary antibody (1:2000 dilution), showing cytoplasmic and nuclear staining. The nuclear stain is DAPI (blue). Negative control: Anti-Goat IgG followed by Alexa Fluor® 488 secondary antibody.