

## UK Office

**Everest Biotech Ltd**  
Cherwell Innovation Centre  
77 Heyford Park  
Upper Heyford  
Oxfordshire  
OX25 5HD  
UK

Enquiries:

[info@everestbiotech.com](mailto:info@everestbiotech.com)

Sales:

[sales@everestbiotech.com](mailto:sales@everestbiotech.com)

Tech support:

[support@everestbiotech.com](mailto:support@everestbiotech.com)

Tel: +44 (0)1869 238326

Fax: +44 (0)1869 238327

## US Office

**Everest Biotech c/o Abcore**  
405 Maple Street, Suite A106  
Ramona,  
CA 92065  
USA

Inquiries:

[info@everestbiotech.com](mailto:info@everestbiotech.com)

Sales:

[usasales@everestbiotech.com](mailto:usasales@everestbiotech.com)

Tech support:

[support@everestbiotech.com](mailto:support@everestbiotech.com)

Tel: 888-320-4628 (toll-free)

Fax: 888-841-9041

[www.everestbiotech.com](http://www.everestbiotech.com)

**Research Use Only. Not for  
diagnostic or therapeutic use.**

## EB06392 - Goat Anti-FOXO3A / FOXO3 / FKHRL1 Antibody

Size: 100µg specific antibody in 200µl



### Target Protein

**Principal Names:** FOXO3A, FKHRL1, AF6q21, FKHRL1P2, MGC12739, MGC31925, DKFZp781A0677, forkhead box O3A, forkhead (Drosophila) homolog (rhabdomyosarcoma) like 1, forkhead, Drosophila, homolog of, in rhabdomyosarcoma-like 1, FOXO3, forkhead box O3, FOXO2, forkhead homolog (rhabdomyosarcoma) like 1, forkhead, Drosophila, homolog of, in rhabdomyosarcoma-like 1

**Official Symbol:** FOXO3

**Accession Number(s):** NP\_001446.1

**Human GeneID(s):** [2309](#)

**Non-Human GeneID(s):** 56484 (mouse)

**Important Comments:** Both variants represent identical protein (NP\_001446.1 and NP\_963853.1).

### Immunogen

Peptide with sequence C-GAKQASSQSWVPG, from the C Terminus of the protein sequence according to NP\_001446.1.

Please note the [peptide](#) is available for sale.

### Purification and Storage

Purified from goat serum by ammonium sulphate precipitation followed by antigen affinity chromatography using the immunizing peptide.

Supplied at 0.5 mg/ml in Tris saline, 0.02% sodium azide, pH7.3 with 0.5% bovine serum albumin.

Aliquot and store at -20°C. Minimize freezing and thawing.

### Applications Tested

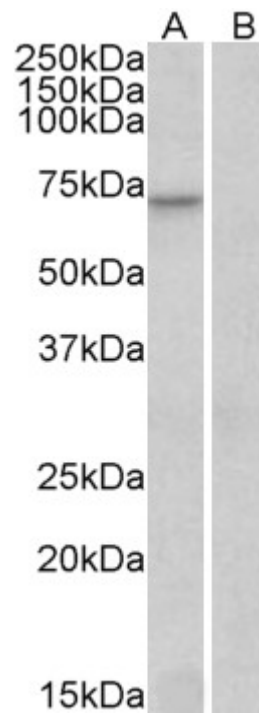
**Peptide ELISA:** antibody detection limit dilution 1:8000.

**Western blot:** Approx 70kDa band observed in Human Heart lysates (calculated MW of 71.3kDa according to NP\_001446.1). Recommended concentration: 0.1-1 µg/ml. Primary incubation was 1 hour.

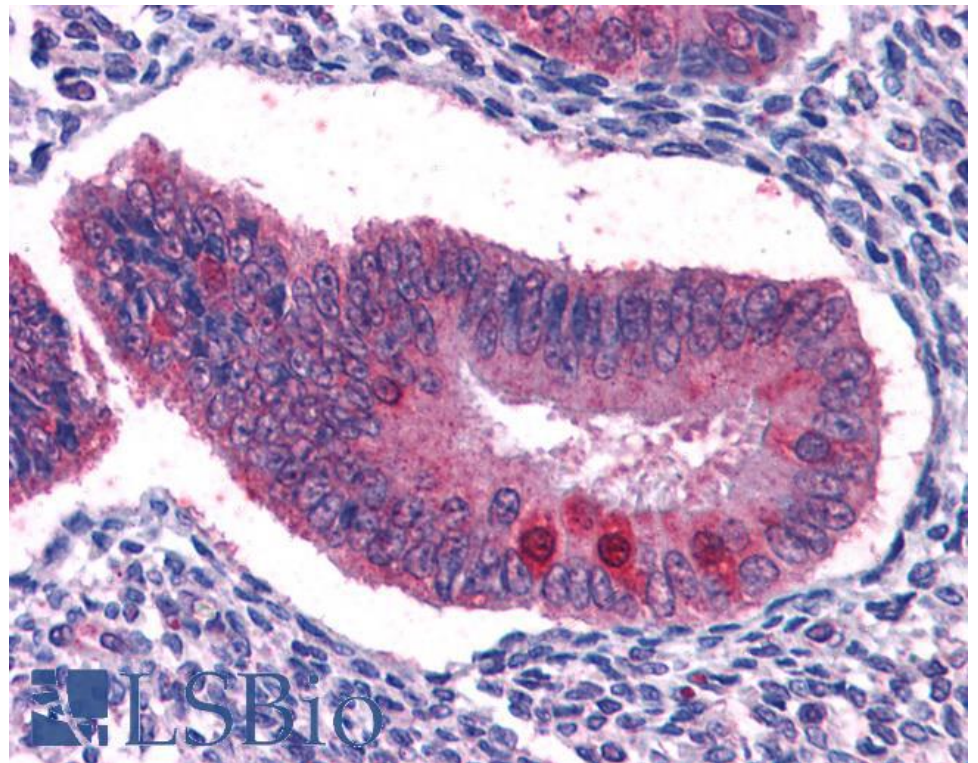
### Species Reactivity

**Tested:** Human

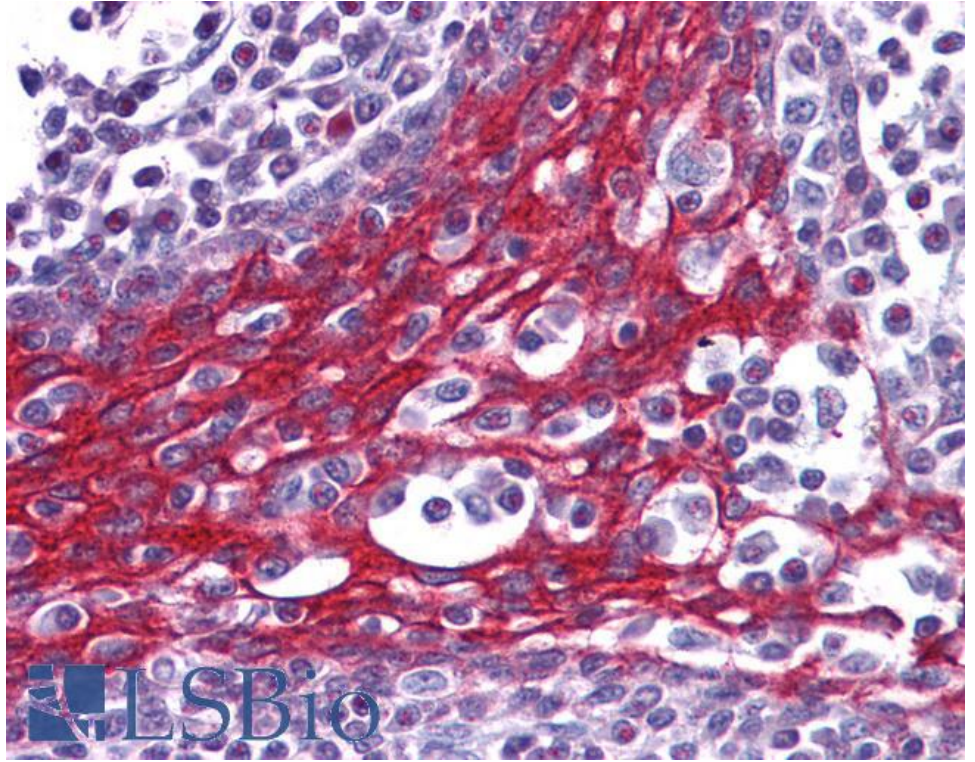
**Expected from sequence similarity:** Human, Mouse, Rat, Dog, Pig, Cow



EB06392 (0.3µg/ml) staining of Human Heart lysate (35µg protein in RIPA buffer) with (A) and without (B) blocking with the immunising peptide. Detected by chemiluminescence.



EB06392 (2.5µg/ml) staining of paraffin embedded Human Uterus. Steamed antigen retrieval with citrate buffer pH 6, AP-staining. **This data is from a previous batch, not on sale.**



EB06392 (2.5µg/ml) staining of paraffin embedded Human Tonsil. Steamed antigen retrieval with citrate buffer pH 6, AP-staining. **This data is from a previous batch, not on sale.**