



UK Office

Everest Biotech Ltd

Cherwell Innovation Centre
77 Heyford Park
Upper Heyford
Oxfordshire
OX25 5HD
UK

Enquiries:

info@everestbiotech.com

Sales:

sales@everestbiotech.com

Tech support:

support@everestbiotech.com

Tel: +44 (0)1869 238326

Fax: +44 (0)1869 238327

US Office

Everest Biotech c/o Abcore

405 Maple Street, Suite A106
Ramona,
CA 92065
USA

Inquiries:

info@everestbiotech.com

Sales:

usasales@everestbiotech.com

Tech support:

support@everestbiotech.com

Tel: 888-320-4628 (toll-free)

Fax: 888-841-9041

www.everestbiotech.com

**Research Use Only. Not for
diagnostic or therapeutic use.**

EB06451 - Goat Anti-FOXP3 Antibody

Size: 100µg specific antibody in 200µl



Target Protein

Principal Names: FOXP3, forkhead box P3, JM2, AIID, IPEX, PIDX, XPID, DIETER, SCURFIN, scurfin, JM2 protein, immunodeficiency, polyendocrinopathy, enteropathy, X-linked, immune dysregulation, polyendocrinopathy, enteropathy, X-linked

Official Symbol: FOXP3

Accession Number(s): NP_054728; NP_001107849.1

Human GeneID(s): [50943](#)

Immunogen

Peptide with sequence CSNPTPGP, from the C Terminus of the protein sequence according to NP_054728; NP_001107849.1.

Please note the [peptide](#) is available for sale.

Purification and Storage

Purified from goat serum by ammonium sulphate precipitation followed by antigen affinity chromatography using the immunizing peptide.

Supplied at 0.5 mg/ml in Tris saline, 0.02% sodium azide, pH7.3 with 0.5% bovine serum albumin.

Aliquot and store at -20°C. Minimize freezing and thawing.

Applications Tested

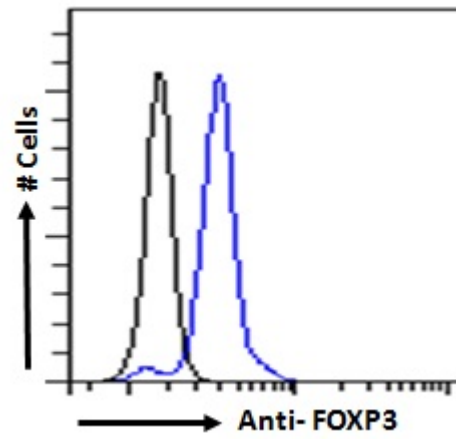
Peptide ELISA: antibody detection limit dilution 1:2000.

Flow Cytometry: Flow cytometric analysis of Human peripheral blood mononuclear cells. Recommended concentration: 10ug/ml.

Species Reactivity

Tested: Human

Expected from sequence similarity: Human, Cow



EB06451 Flow cytometric analysis of paraformaldehyde fixed Human peripheral blood mononuclear cells (blue line), permeabilized with 0.5% Triton. Primary incubation 1hr (10ug/ml) followed by Alexa Fluor 488 secondary antibody (2ug/ml). IgG control: Unimmunized goat IgG (black line) followed by Alexa Fluor 488 secondary antibody.