



International Office

Everest Biotech Ltd

Vector Laboratories, Inc.
6737 Mowry Ave
Newark, CA 94560
United States

Customer Service:

customerservice@vectorlabs.com

Technical Service:

technical@vectorlabs.com

Tel: +1 (800) 227-6666

www.everestbiotech.com

**Research Use Only. Not for
diagnostic or therapeutic use.**

EB07034 - Goat Anti-Foxp3 Antibody

Size: 100µg specific antibody in 200µl



Target Protein

Principal Names: Foxp3, forkhead box P3 [Mus musculus], MGI:1891436, JM2, scurf, sf, scurfy, RP23-54C14.1, OTTMUSP00000017952, OTTMUSP00000017961

Official Symbol: Foxp3

Accession Number(s): NP_473380.1

Non-Human GeneID(s): 20371 (mouse)

Immunogen

Peptide with sequence CTFPRSGTPRKDSN, from the internal region of the protein sequence according to NP_473380.1.

Please note the [peptide](#) is available for sale.

Purification and Storage

Purified from goat serum by ammonium sulphate precipitation followed by antigen affinity chromatography using the immunizing peptide.

Supplied at 0.5 mg/ml in Tris saline, 0.02% sodium azide, pH7.3 with 0.5% bovine serum albumin.

Aliquot and store at -20°C. Minimize freezing and thawing.

Applications Tested

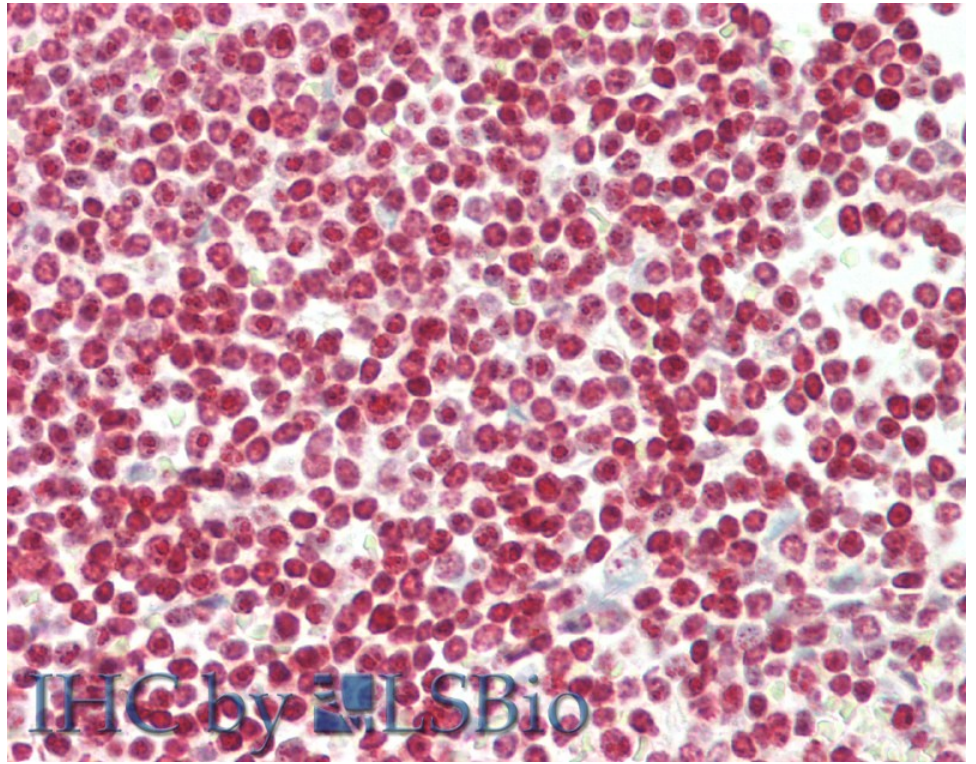
Peptide ELISA: antibody detection limit dilution 1:16000.

IHC: Paraffin embedded Human Spleen. Recommended concentration: 5µg/ml.

Species Reactivity

Tested: Human

Expected from sequence similarity: Mouse, Rat



EB07034 (5µg/ml) staining of paraffin embedded Human Spleen. Steamed antigen retrieval with citrate buffer pH 6, AP-staining.