



## UK Office

### Everest Biotech Ltd

Cherwell Innovation Centre  
77 Heyford Park  
Upper Heyford  
Oxfordshire  
OX25 5HD  
UK

Enquiries:

[info@everestbiotech.com](mailto:info@everestbiotech.com)

Sales:

[sales@everestbiotech.com](mailto:sales@everestbiotech.com)

Tech support:

[support@everestbiotech.com](mailto:support@everestbiotech.com)

Tel: +44 (0)1869 238326

Fax: +44 (0)1869 238327

## US Office

### Everest Biotech c/o Abcore

405 Maple Street, Suite A106  
Ramona,  
CA 92065  
USA

Inquiries:

[info@everestbiotech.com](mailto:info@everestbiotech.com)

Sales:

[usasales@everestbiotech.com](mailto:usasales@everestbiotech.com)

Tech support:

[support@everestbiotech.com](mailto:support@everestbiotech.com)

Tel: 888-320-4628 (toll-free)

Fax: 888-841-9041

[www.everestbiotech.com](http://www.everestbiotech.com)

**Research Use Only. Not for  
diagnostic or therapeutic use.**

## EB05294-T - Goat Anti-FOXP3 / SCURFIN Antibody - Trial

Size: 20µg specific antibody in 40µl



### Target Protein

**Principal Names:** FOXP3, SCURFIN, forkhead box P3, JM2, AIID, IPEX, PIDX, XPID, DIETER, JM2 protein, immunodeficiency, polyendocrinopathy, enteropathy, X-linked, immune dysregulation, polyendocrinopathy, enteropathy, X-linked, MGC141961, MGC141963, FOXP3delta7, scurfin

**Official Symbol:** FOXP3

**Accession Number(s):** NP\_054728.2; NP\_001107849.1

**Human GeneID(s):** [50943](#)

**Important Comments:** This antibody is expected to recognize both reported isoforms (NP\_054728.2 and NP\_001107849.1)

### Immunogen

Peptide with sequence SQRPSRCSNPTPGP, from the C Terminus of the protein sequence according to NP\_054728.2; NP\_001107849.1.

Please note the [peptide](#) is available for sale.

### Purification and Storage

Purified from goat serum by ammonium sulphate precipitation followed by antigen affinity chromatography using the immunizing peptide.

Supplied at 0.5 mg/ml in Tris saline, 0.02% sodium azide, pH7.3 with 0.5% bovine serum albumin.

Aliquot and store at -20°C. Minimize freezing and thawing.

### Applications Tested

**Peptide ELISA:** antibody detection limit dilution 1:8000.

**Western blot:** Approx 48-50kDa band observed in Human Muscle lysates and in lysates of cell line MOLT4 (calculated MW of 47.2kDa according to NP\_054728.2).

Recommended concentration: 1-3µg/ml. Primary incubation 1 hour at room temperature.

**Negative Control:** Human Pancreas lysate.

**IHC:** Paraffin embedded Human Spleen. Recommended concentration: 6-8µg/ml.

**Immunofluorescence:** Strong expression of the protein seen in the nucleoplasm of U2OS cells. Recommended concentration: 10µg/ml.

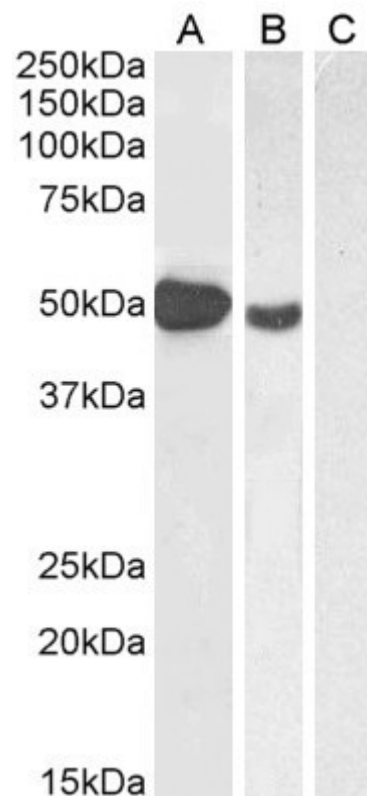
**Flow Cytometry:** Flow cytometric analysis of Jurkat cells. Recommended concentration: 10ug/ml.

**Immunocytochemistry:** CD25-sorted (Treg) Human blood cells with nuclear speckled staining. Recommended concentration 2-4ug/ml for overnight staining.

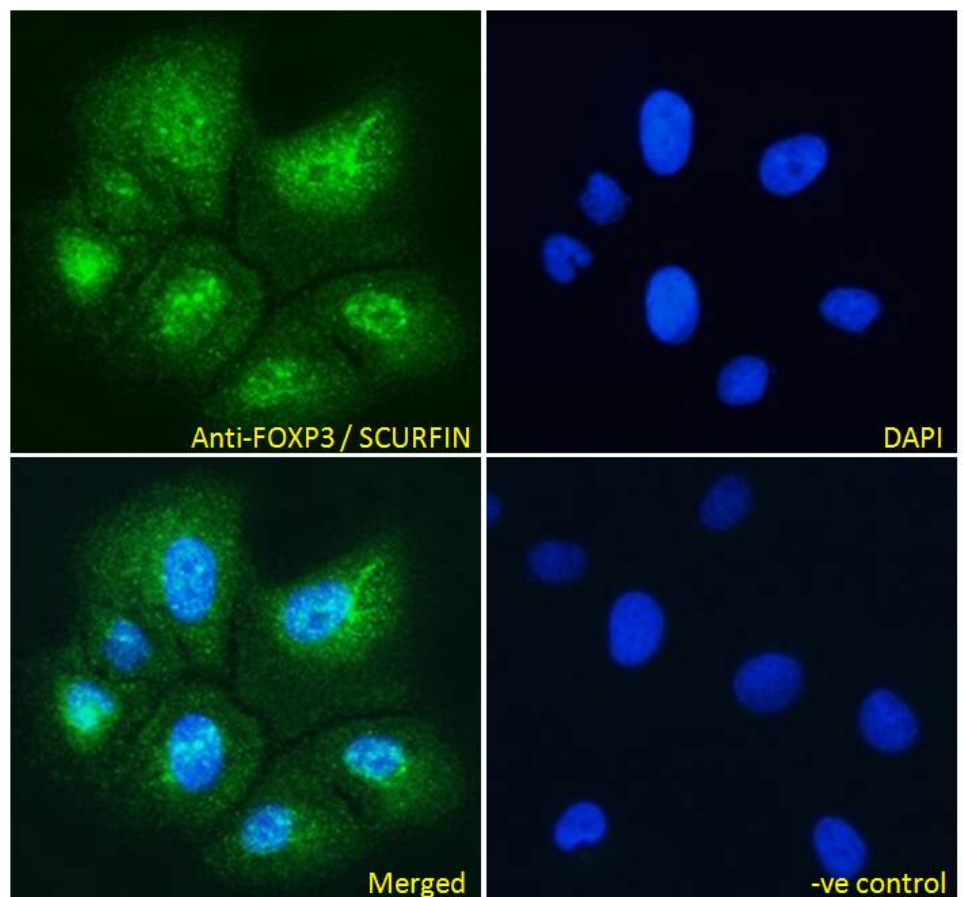
### Species Reactivity

**Tested:** Human

**Expected from sequence similarity:** Human

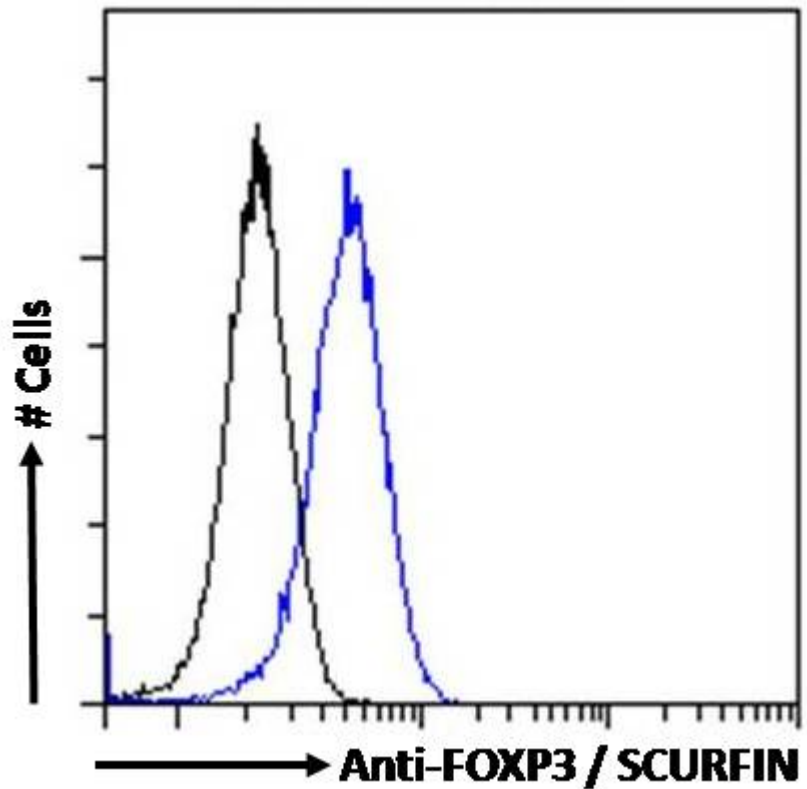


EB05294 (1 $\mu$ g/ml) staining of Human Muscle (A), (2 $\mu$ g/ml) MOLT4 (B) and (1 $\mu$ g/ml) negative control Pancreas (C) lysate (35 $\mu$ g protein in RIPA buffer). Detected by chemiluminescence.

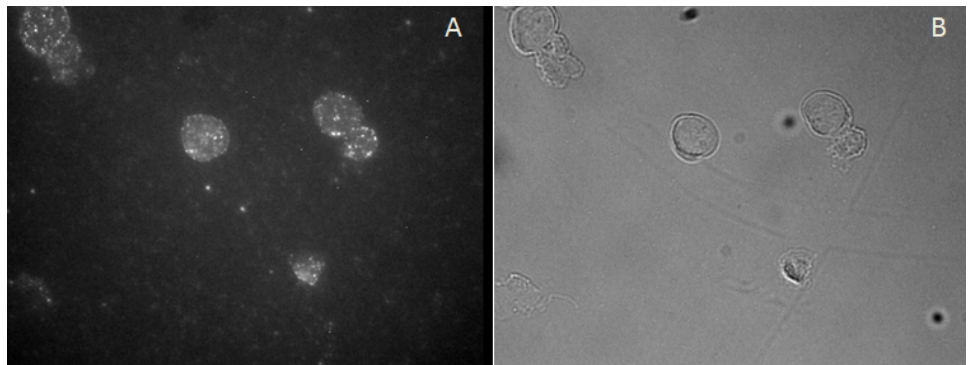


EB05294 Immunofluorescence analysis of paraformaldehyde fixed U2OS cells, permeabilized with 0.15% Triton. Primary incubation 1hr (10 $\mu$ g/ml) followed by Alexa Fluor 488 secondary antibody (4 $\mu$ g/ml), showing strong

localization to nucleoplasm. The nuclear stain is DAPI (blue). Negative control: Unimmunized goat IgG (10ug/ml) followed by Alexa Fluor 488 secondary antibody (4ug/ml).

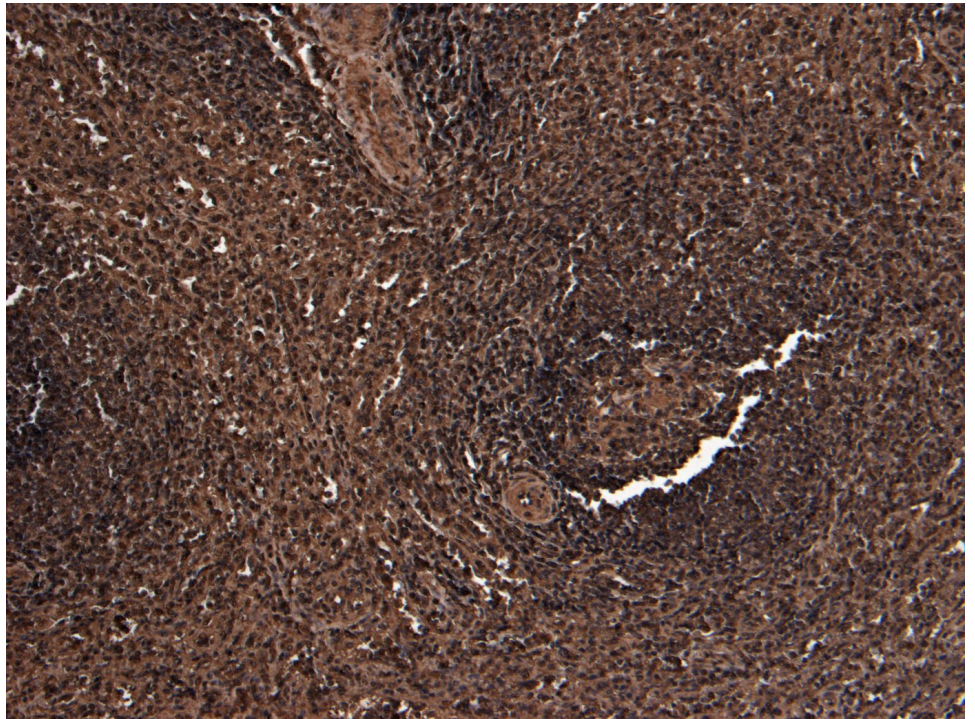


EB05294 Flow cytometric analysis of paraformaldehyde fixed Jurkat cells (blue line), permeabilized with 0.5% Triton. Primary incubation 1hr (10ug/ml) followed by Alexa Fluor 488 secondary antibody (4ug/ml). IgG control: Unimmunized goat IgG (black line) followed by Alexa Fluor 488 secondary antibody.

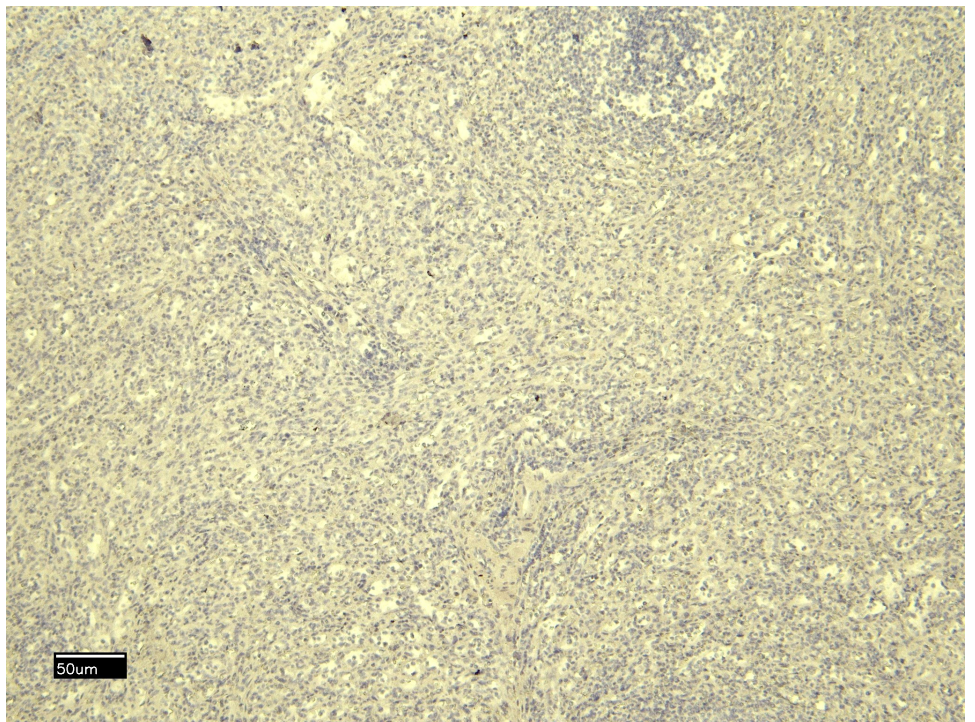


EB05294 staining of CD25-sorted (Treg) Human blood cells gathered by cytospin and detected by FITC (A) and in phase contrast (B).





EB05294 (8µg/ml) staining of paraffin embedded Human Spleen. Heat induced antigen retrieval with citrate buffer Ph 6, HRP-staining.



EB05294 Negative Control showing staining of paraffin embedded Human Spleen, with no primary antibody.