



## International Office

### Everest Biotech Ltd

Vector Laboratories, Inc.  
6737 Mowry Ave  
Newark, CA 94560  
United States

Customer Service:

[customerservice@vectorlabs.com](mailto:customerservice@vectorlabs.com)

Technical Service:

[technical@vectorlabs.com](mailto:technical@vectorlabs.com)

Tel: +1 (800) 227-6666

[www.everestbiotech.com](http://www.everestbiotech.com)

**Research Use Only. Not for  
diagnostic or therapeutic use.**

## EB06376-T - Goat Anti-FOXP3 / Scurfin (Mouse) Antibody - Trial

Size: 20µg specific antibody in 40µl



### Target Protein

**Principal Names:** Foxp3, forkhead box P3, sf, JM2, scurfin, scurfy, RP23-54C14.1, OTTMUSP00000017952, OTTMUSP00000017961, OTTMUSP00000017962

**Official Symbol:** Foxp3

**Accession Number(s):** NP\_473380.1

**Non-Human GeneID(s):** 20371 (mouse), 317382 (rat)

**Important Comments:** Note - anti-mouse companion product of EB05294

### Immunogen

Peptide with sequence KRSQRPNKCSNP, from the C Terminus of the protein sequence according to NP\_473380.1.

Please note the [peptide](#) is available for sale.

### Purification and Storage

Purified from goat serum by ammonium sulphate precipitation followed by antigen affinity chromatography using the immunizing peptide.

Supplied at 0.5 mg/ml in Tris saline, 0.02% sodium azide, pH7.3 with 0.5% bovine serum albumin.

Aliquot and store at -20°C. Minimize freezing and thawing.

### Applications Tested

**Peptide ELISA:** antibody detection limit dilution 1:32000.

**IHC:** Paraffin embedded Mouse Spleen. Recommended concentration: 5-6µg/ml.

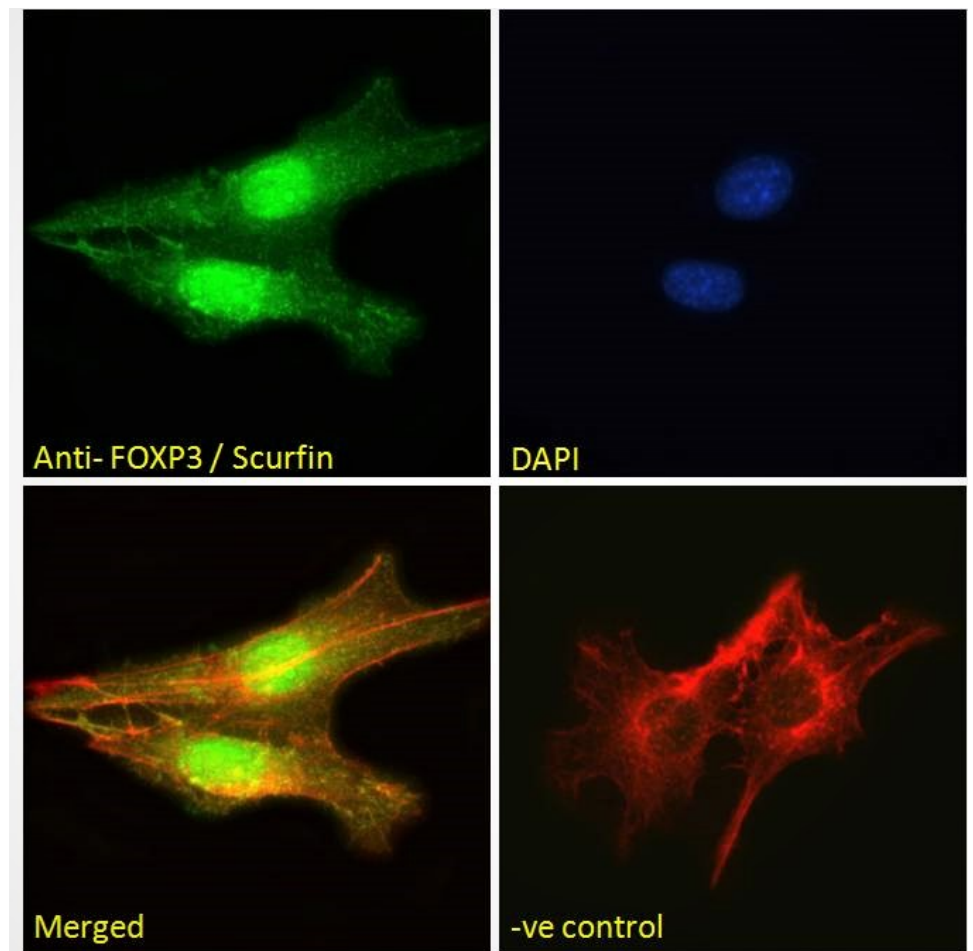
**Immunofluorescence:** Strong expression of the protein seen in the nuclei of NIH3T3 cells. Recommended concentration: 10µg/ml.

**Flow Cytometry:** Flow cytometric analysis of NIH3T3 cells. Recommended concentration: 10ug/ml.

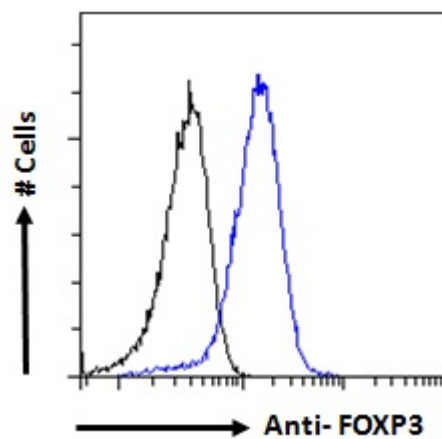
### Species Reactivity

**Tested:** Mouse

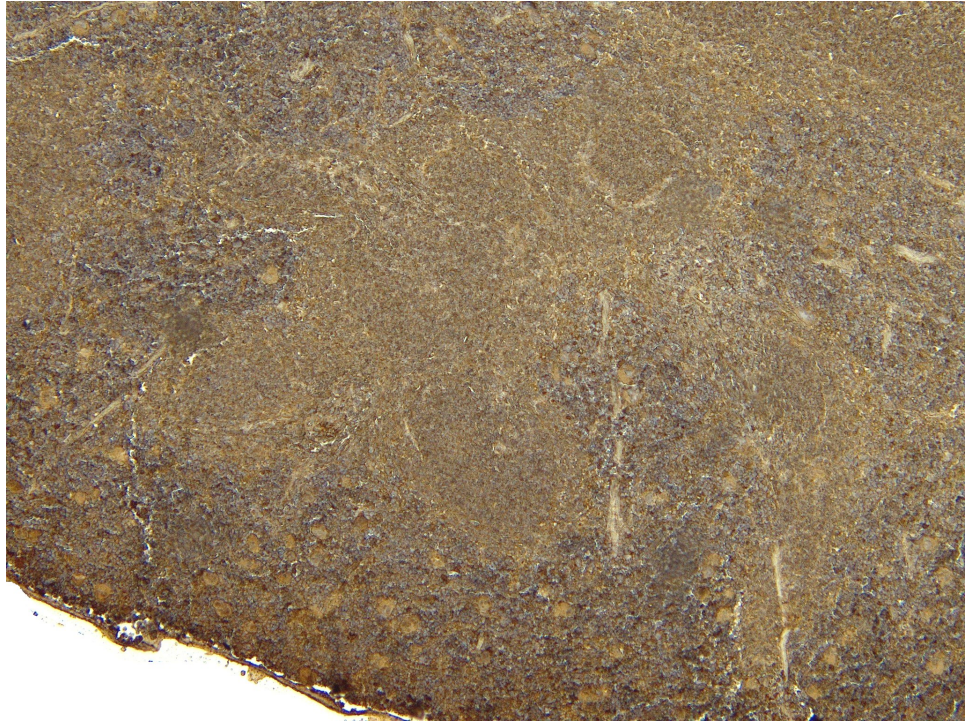
**Expected from sequence similarity:** Mouse, Rat



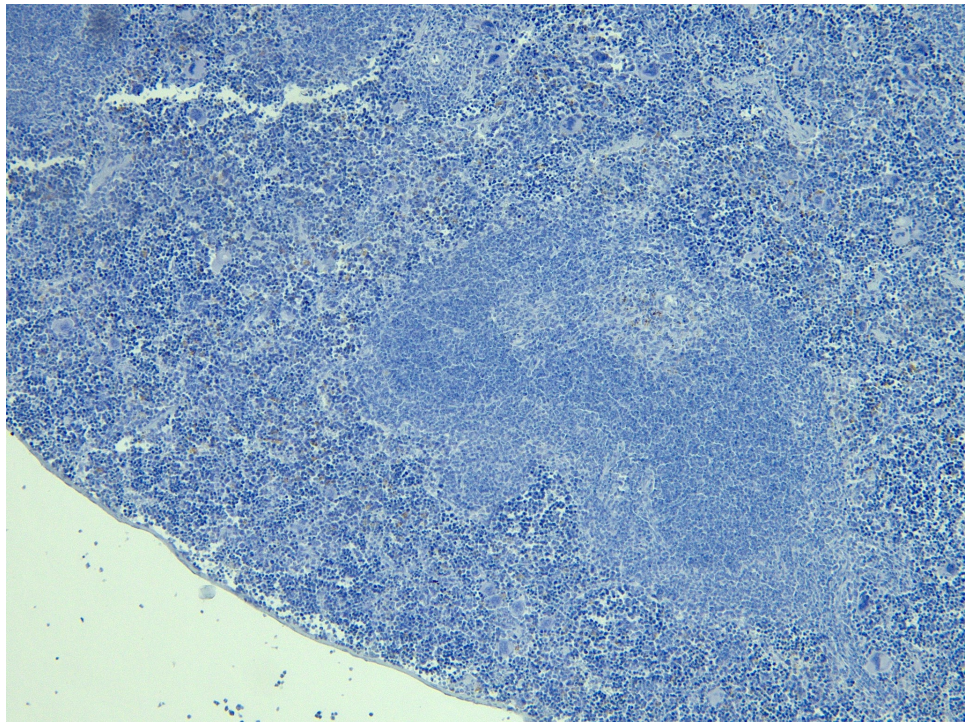
EB06376 Immunofluorescence analysis of paraformaldehyde fixed NIH3T3 cells, permeabilized with 0.15% Triton. Primary incubation 1hr (10ug/ml) followed by Alexa Fluor 488 secondary antibody (2ug/ml), showing nuclear staining. Actin filaments were stained with phalloidin (red) and the nuclear stain is DAPI (blue). Negative control: Unimmunized goat IgG (10ug/ml) followed by Alexa Fluor 488 secondary antibody (2ug/ml).



EB06376 Flow cytometric analysis of paraformaldehyde fixed NIH3T3 cells (blue line), permeabilized with 0.5% Triton. Primary incubation 1hr (10ug/ml) followed by Alexa Fluor 488 secondary antibody (1ug/ml). IgG control: Unimmunized goat IgG (black line) followed by Alexa Fluor 488 secondary antibody.



EB06376 (5 $\mu$ g/ml) staining of paraffin embedded Mouse Spleen. Heat induced antigen retrieval with citrate buffer pH 6, HRP-staining.



EB06376 Negative Control showing staining of paraffin embedded Mouse Spleen, with no primary antibody.