



EB06979 - Goat Anti-FPRL1 (aa328-339) Antibody

Size: 100µg specific antibody in 200µl



UK Office

Everest Biotech Ltd

Cherwell Innovation Centre
77 Heyford Park
Upper Heyford
Oxfordshire
OX25 5HD
UK

Enquiries:

info@everestbiotech.com

Sales:

sales@everestbiotech.com

Tech support:

support@everestbiotech.com

Tel: +44 (0)1869 238326

Fax: +44 (0)1869 238327

US Office

Everest Biotech c/o Abcore

405 Maple Street, Suite A106
Ramona,
CA 92065
USA

Inquiries:

info@everestbiotech.com

Sales:

usasales@everestbiotech.com

Tech support:

support@everestbiotech.com

Tel: 888-320-4628 (toll-free)

Fax: 888-841-9041

www.everestbiotech.com

Research Use Only. Not for diagnostic or therapeutic use.

Target Protein

Principal Names: FPRL1, ALXR, HM63, FMLPX, FPR2A, FPRH1, FPRH2, LXA4R, FMLP-R-II, formyl peptide receptor-like 1, lipoxin A4 receptor (formyl peptide receptor related), FPR2, formyl peptide receptor 2

Official Symbol: FPR2

Accession Number(s): NP_001005738.1; NP_001453.1

Human GeneID(s): [2358](#)

Important Comments: Both reported variants (NP_001005738.1 and NP_001453.1) are identical proteins.

Immunogen

Peptide with sequence C-DSAPTNDTAANS, from the C Terminus of the protein sequence according to NP_001005738.1; NP_001453.1.

Please note the [peptide](#) is available for sale.

Purification and Storage

Purified from goat serum by ammonium sulphate precipitation followed by antigen affinity chromatography using the immunizing peptide.

Supplied at 0.5 mg/ml in Tris saline, 0.02% sodium azide, pH7.3 with 0.5% bovine serum albumin.

Aliquot and store at -20°C. Minimize freezing and thawing.

Applications Tested

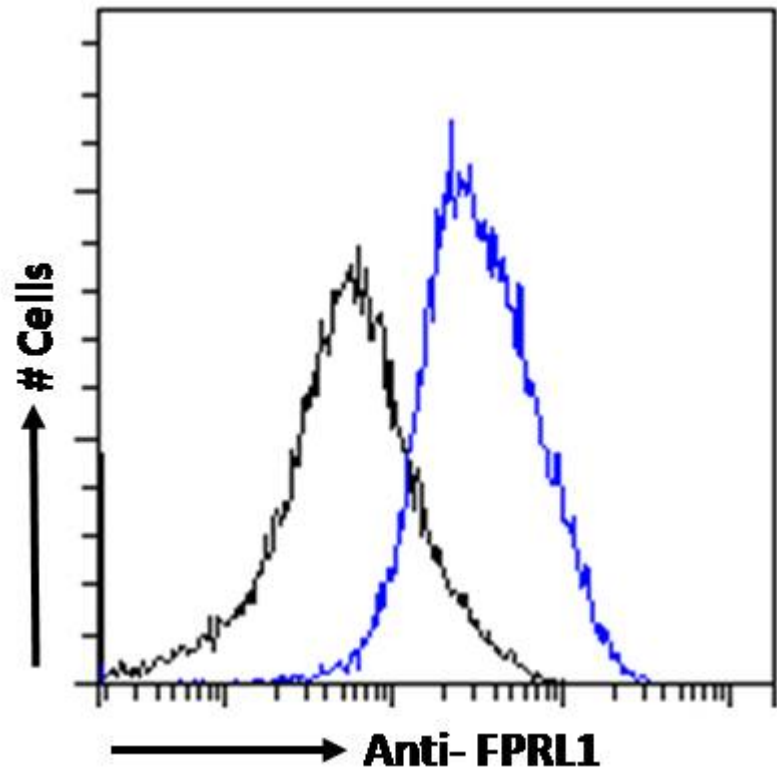
Peptide ELISA: antibody detection limit dilution 1:1000.

Flow Cytometry: Flow cytometric analysis of K562 cells. Recommended concentration: 10ug/ml.

Species Reactivity

Tested: Human

Expected from sequence similarity: Human



EB06979 Flow cytometric analysis of paraformaldehyde fixed K562 cells (blue line), permeabilized with 0.5% Triton. Primary incubation 1hr (10ug/ml) followed by Alexa Fluor 488 secondary antibody (1ug/ml). IgG control: Unimmunized goat IgG (black line) followed by Alexa Fluor 488 secondary antibody.