



UK Office

Everest Biotech Ltd

Cherwell Innovation Centre
77 Heyford Park
Upper Heyford
Oxfordshire
OX25 5HD
UK

Enquiries:

info@everestbiotech.com

Sales:

sales@everestbiotech.com

Tech support:

support@everestbiotech.com

Tel: +44 (0)1869 238326

www.everestbiotech.com

**Research Use Only. Not for
diagnostic or therapeutic use.**

EB09091 - Goat Anti-FTH1 Antibody

Size: 100µg specific antibody in 200µl



Target Protein

Principal Names: FTH1, ferritin, heavy polypeptide 1, FHC, FTH, FTHL6, MGC104426, PIG15, PLIF, apoferritin, placenta immunoregulatory factor, proliferation-inducing protein 15

Official Symbol: FTH1

Accession Number(s): NP_002023.2

Human GeneID(s): [2495](#)

Immunogen

Peptide with sequence C-DKHTLGSDNES, from the C Terminus of the protein sequence according to NP_002023.2.

Please note the [peptide](#) is available for sale.

Purification and Storage

Purified from goat serum by ammonium sulphate precipitation followed by antigen affinity chromatography using the immunizing peptide.

Supplied at 0.5 mg/ml in Tris saline, 0.02% sodium azide, pH7.3 with 0.5% bovine serum albumin.

Aliquot and store at -20°C. Minimize freezing and thawing.

Applications Tested

Peptide ELISA: antibody detection limit dilution 1:4000.

Western blot: Preliminary testing showed a band at approx. 20kDa in A431, HeLa and U251 cell lysate at a concentration of 3µg/ml (calculated Mwt. of 21.2kDa according to NP_002023.2). Primary incubation 1 hour at room temperature.

IHC: In paraffin embedded Human Liver shows staining in the cytosol in some hepatocytes. Recommended concentration: 2-4µg/ml.

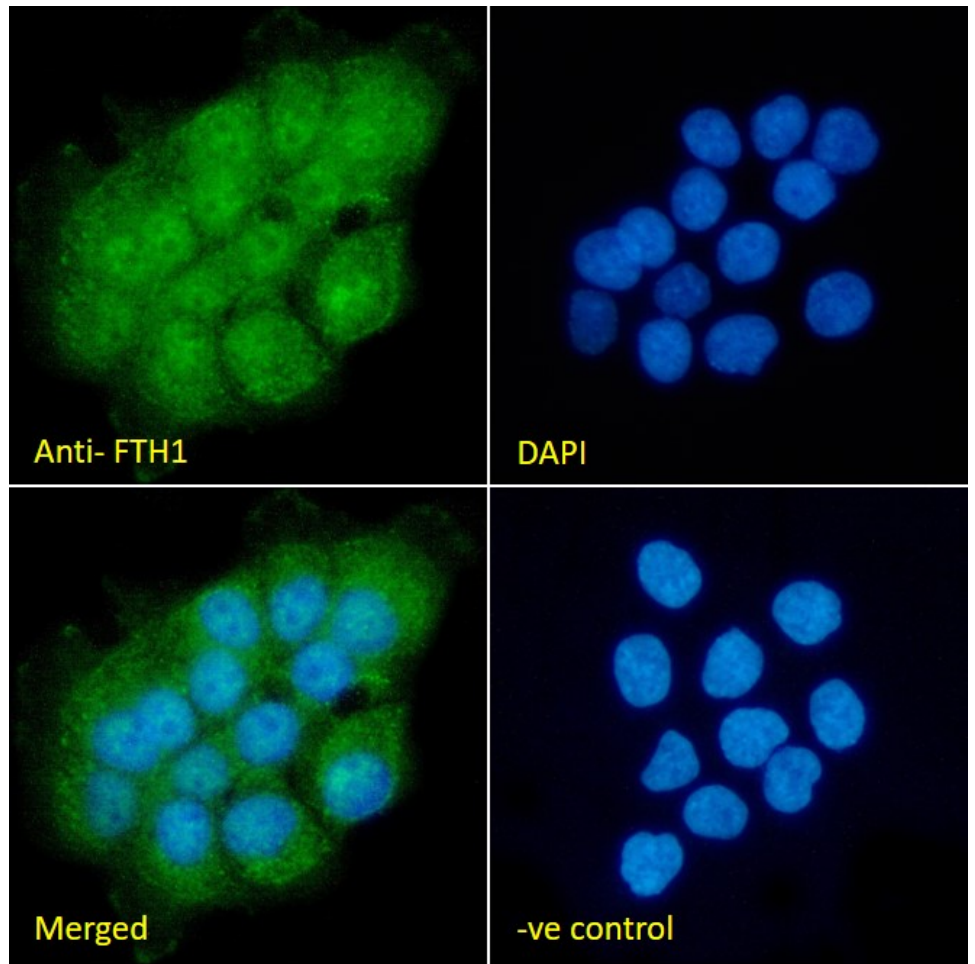
Immunofluorescence: Strong expression of the protein seen in the nuclei and cytoplasm of A431 cells. Recommended concentration: 10µg/ml.

Flow Cytometry: Flow cytometric analysis of A431 cells. Recommended concentration: 10µg/ml.

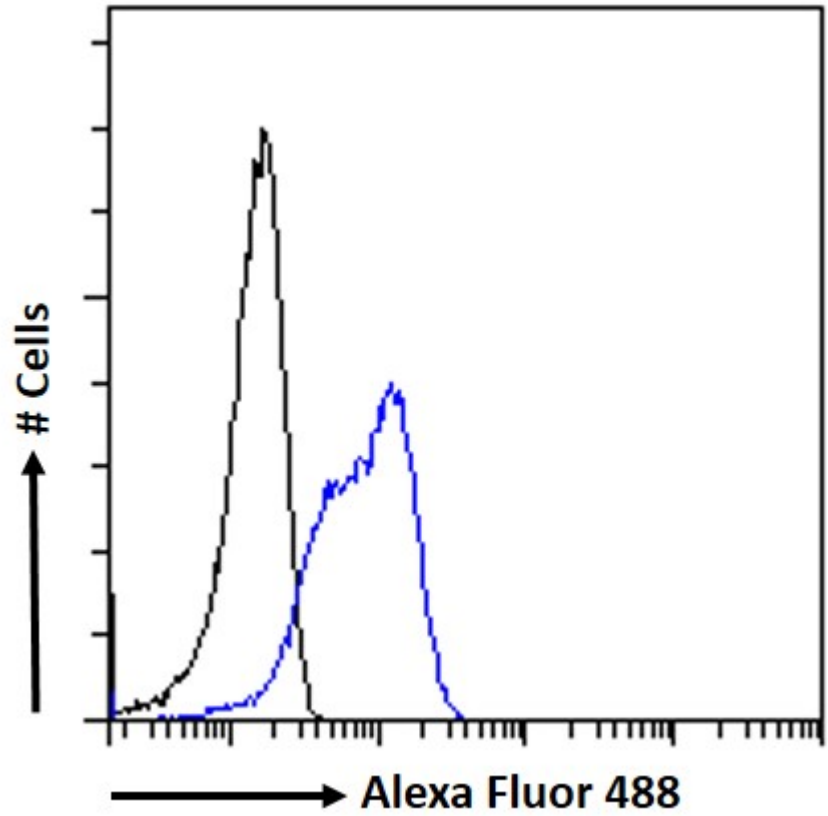
Species Reactivity

Tested: Human

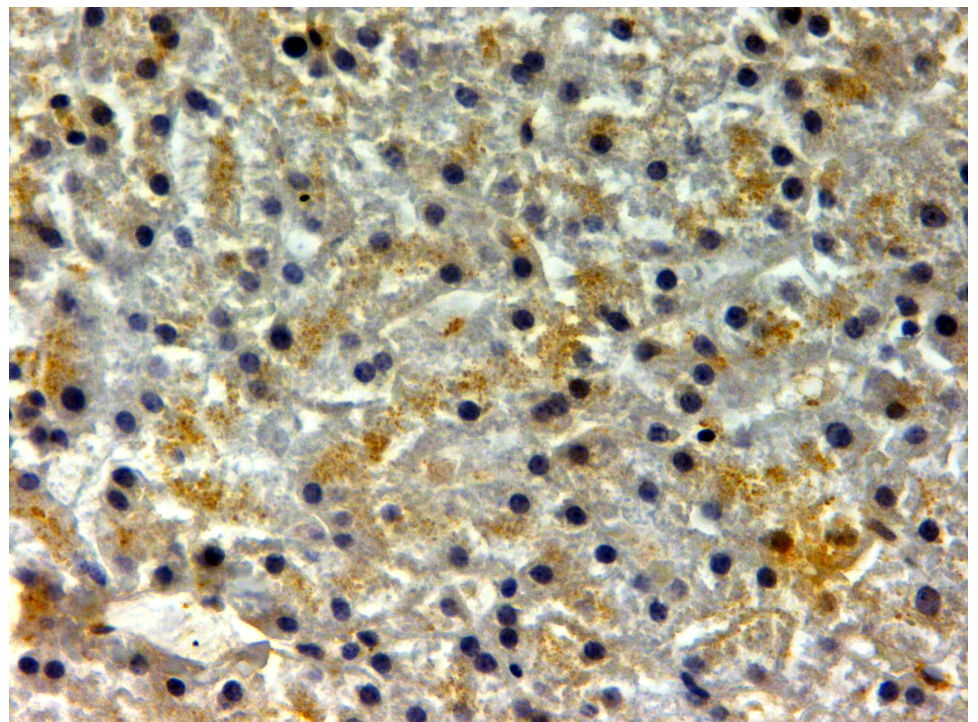
Expected from sequence similarity: Human



EB09091 Immunofluorescence analysis of paraformaldehyde fixed A431 cells, permeabilized with 0.15% Triton. Primary incubation 1hr (10ug/ml) followed by Alexa Fluor 488 secondary antibody (2ug/ml), showing nuclear and cytoplasmic staining. The nuclear stain is DAPI (blue). Negative control: Unimmunized goat IgG (10ug/ml) followed by Alexa Fluor 488 secondary antibody (2ug/ml).



EB09091 Flow cytometric analysis of paraformaldehyde fixed A431 cells (blue line), permeabilized with 0.5% Triton. Primary incubation 1hr (10ug/ml) followed by Alexa Fluor 488 secondary antibody (1ug/ml). IgG control: Unimmunized goat IgG (black line) followed by Alexa Fluor 488 secondary antibody.



EB09091 (2µg/ml) staining of paraffin embedded Human Liver. Steamed antigen retrieval with citrate buffer pH 6, HRP-staining.