



International Office

Everest Biotech Ltd

Vector Laboratories, Inc.
6737 Mowry Ave
Newark, CA 94560
United States

Customer Service:

customerservice@vectorlabs.com

Technical Service:

technical@vectorlabs.com

Tel: +1 (800) 227-6666

www.everestbiotech.com

**Research Use Only. Not for
diagnostic or therapeutic use.**

EB09092 - Goat Anti-FTL Antibody

Size: 100µg specific antibody in 200µl



Target Protein

Principal Names: FTL, ferritin, light polypeptide, MGC71996, L apoferritin, ferritin L subunit, ferritin L-chain, ferritin light chain, ferritin light polypeptide-like 3, LFTD, NBIA3

Official Symbol: FTL

Accession Number(s): NP_000137.2

Human GeneID(s): [2512](#)

Non-Human GeneID(s): 14325 (mouse), 29292 (rat)

Immunogen

Peptide with sequence C-GEYLFERLTLKHD, from the C Terminus of the protein sequence according to NP_000137.2.

Please note the [peptide](#) is available for sale.

Purification and Storage

Purified from goat serum by ammonium sulphate precipitation followed by antigen affinity chromatography using the immunizing peptide.

Supplied at 0.5 mg/ml in Tris saline, 0.02% sodium azide, pH7.3 with 0.5% bovine serum albumin.

Aliquot and store at -20°C. Minimize freezing and thawing.

Applications Tested

Peptide ELISA: antibody detection limit dilution 1:32000.

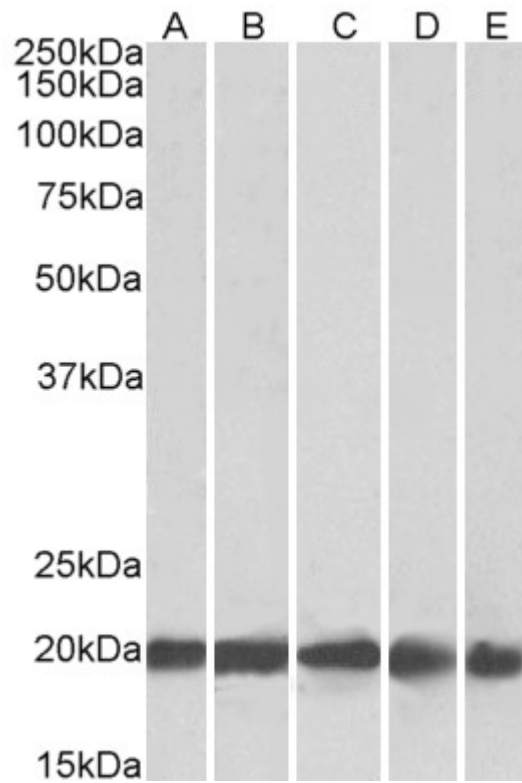
Western blot: Approx. 20kDa band observed in Human Brain (Cerebellum), Liver, Placenta and 22kDa in Mouse and Rat Brain lysates (calculated MW of 20.0kDa according to NP_000137.2). Recommended concentration: 0.3-1.0µg/ml. Primary incubation was 1 hour.

IHC: Paraffin embedded Human Spleen. Recommended concentration: 4-6µg/ml.

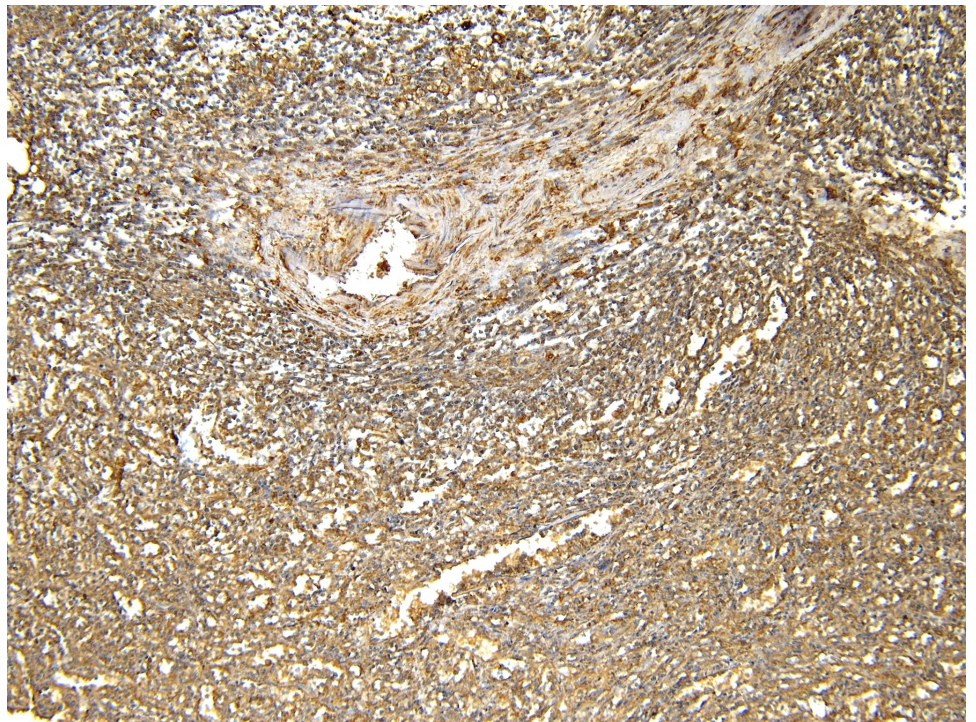
Species Reactivity

Tested: Human, Mouse, Rat

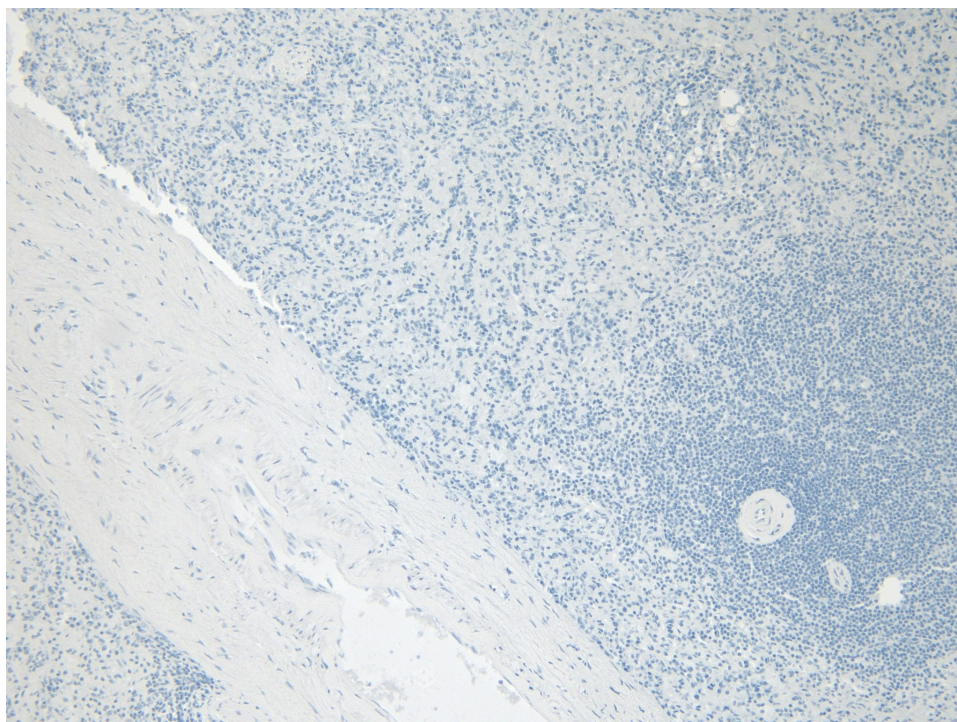
Expected from sequence similarity: Human, Mouse, Rat, Dog, Cow



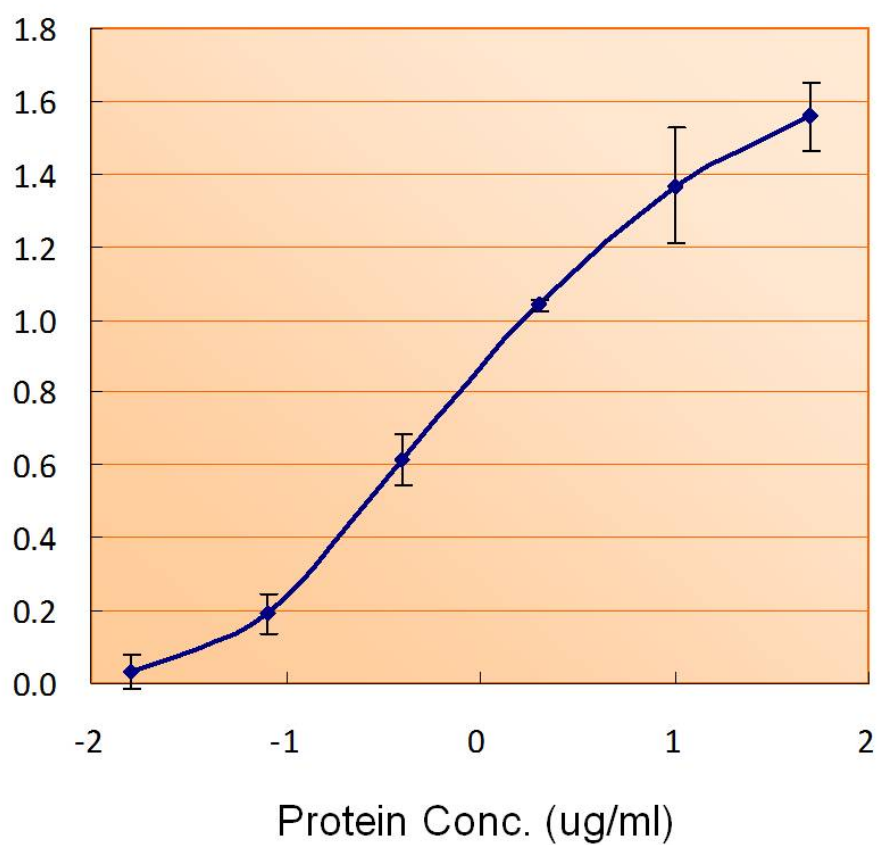
EB09092 (0.3 μ g/ml) staining of Human Brain (Cerebellum) (A), Liver (B), Human Placenta (C) 22kDa in Mouse Brain (D), Rat Brain lysate (35 μ g protein in RIPA buffer). Detected by chemiluminescence.



EB09092 (4 μ g/ml) staining of paraffin embedded Human Spleen. Heat induced antigen retrieval with citrate buffer pH 6, HRP-staining.



EB09092 Negative Control showing staining of paraffin embedded Human Spleen, with no primary antibody.



EB09092 (1.5ug/ml) as the reporter with EB002025 as the capture rabbit antibody (5ug/ml). **This data is from a previous batch, not on sale.**