



## UK Office

### Everest Biotech Ltd

Cherwell Innovation Centre  
77 Heyford Park  
Upper Heyford  
Oxfordshire  
OX25 5HD  
UK

Enquiries:

[info@everestbiotech.com](mailto:info@everestbiotech.com)

Sales:

[sales@everestbiotech.com](mailto:sales@everestbiotech.com)

Tech support:

[support@everestbiotech.com](mailto:support@everestbiotech.com)

Tel: +44 (0)1869 238326

Fax: +44 (0)1869 238327

## US Office

### Everest Biotech c/o Abcore

405 Maple Street, Suite A106  
Ramona,  
CA 92065  
USA

Inquiries:

[info@everestbiotech.com](mailto:info@everestbiotech.com)

Sales:

[usasales@everestbiotech.com](mailto:usasales@everestbiotech.com)

Tech support:

[support@everestbiotech.com](mailto:support@everestbiotech.com)

Tel: 888-320-4628 (toll-free)

Fax: 888-841-9041

[www.everestbiotech.com](http://www.everestbiotech.com)

**Research Use Only. Not for  
diagnostic or therapeutic use.**

## EB11525 - Goat Anti-Furin (aa553-565) Antibody

Size: 100µg specific antibody in 200µl



### Target Protein

**Principal Names:** dibasic processing enzyme, dibasic-processing enzyme, FES upstream region, FUR, FURIN, furin (paired basic amino acid cleaving enzyme), furin, membrane associated receptor protein, OTTHUMP00000194747, PACE, paired basic amino acid residue-cleaving enzyme, PCSK3, proprotein convertase subtilisin/kexin type 3, SPC1

**Official Symbol:** FURIN

**Accession Number(s):** NP\_002560.1

**Human GeneID(s):** [5045](#)

**Non-Human GeneID(s):** 18550 (mouse), 54281 (rat)

### Immunogen

Peptide with sequence C-NTSEANNYGTLTK, from the internal region of the protein sequence according to NP\_002560.1.

Please note the [peptide](#) is available for sale.

### Purification and Storage

Purified from goat serum by ammonium sulphate precipitation followed by antigen affinity chromatography using the immunizing peptide.

Supplied at 0.5 mg/ml in Tris saline, 0.02% sodium azide, pH7.3 with 0.5% bovine serum albumin.

Aliquot and store at -20°C. Minimize freezing and thawing.

### Applications Tested

**Peptide ELISA:** antibody detection limit dilution 1:8000.

**Western blot:** This antibody is proven unfit for Western blot.

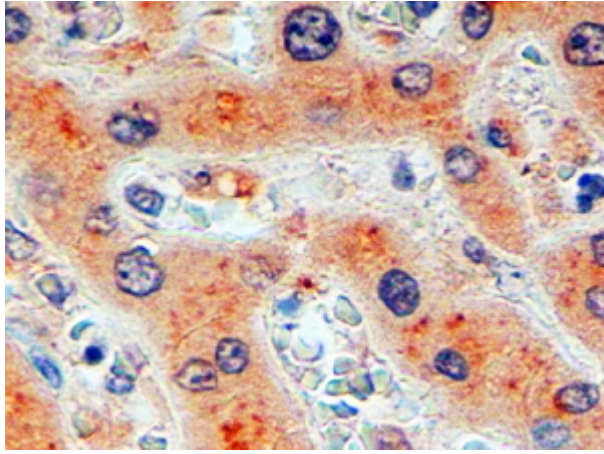
**IHC:** In paraffin embedded Human Liver shows Golgi-like staining in the hepatocytes.

Recommended concentration, 2-4µg/ml.

### Species Reactivity

**Tested:** Human

**Expected from sequence similarity:** Human, Mouse, Rat, Dog, Pig, Cow



EB11525 (2µg/ml) staining of paraffin embedded Human Liver. Steamed antigen retrieval with citrate buffer pH 6, HRP-staining.