

## UK Office

### Everest Biotech Ltd

Cherwell Innovation Centre  
77 Heyford Park  
Upper Heyford  
Oxfordshire  
OX25 5HD  
UK

Enquiries:

[info@everestbiotech.com](mailto:info@everestbiotech.com)

Sales:

[sales@everestbiotech.com](mailto:sales@everestbiotech.com)

Tech support:

[support@everestbiotech.com](mailto:support@everestbiotech.com)

Tel: +44 (0)1869 238326

[www.everestbiotech.com](http://www.everestbiotech.com)

**Research Use Only. Not for  
diagnostic or therapeutic use.**

## EB07361 - Goat Anti-FXR1 Antibody

Size: 100µg specific antibody in 200µl



### Target Protein

**Principal Names:** FXR1, fragile X mental retardation, autosomal homolog 1, fragile X mental retardation-related protein 1

**Official Symbol:** FXR1

**Accession Number(s):** NP\_005078.2; NP\_001013456.1; NP\_001013457.1

**Human GeneID(s):** [8087](#)

**Non-Human GeneID(s):** 14359 (mouse), 361927 (rat)

**Important Comments:** This antibody is expected to recognise all reported isoforms (NP\_005078.2, NP\_001013456.1 and NP\_001013457.1).

### Immunogen

Peptide with sequence C-RIEGDNENKLPRED, from the internal region of the protein sequence according to NP\_005078.2; NP\_001013456.1; NP\_001013457.1.

Please note the [peptide](#) is available for sale.

### Purification and Storage

Purified from goat serum by ammonium sulphate precipitation followed by antigen affinity chromatography using the immunizing peptide.

Supplied at 0.5 mg/ml in Tris saline, 0.02% sodium azide, pH7.3 with 0.5% bovine serum albumin.

Aliquot and store at -20°C. Minimize freezing and thawing.

### Applications Tested

**Peptide ELISA:** antibody detection limit dilution 1:128000.

**Western blot:** Approx 75+80kDa band observed in lysates of cell line NIH-3T3 (calculated MW of 59.9kDa according to NP\_001013457.1). The observed molecular weight corresponds to earlier findings in literature (Khandjian et al Hum Mol Genet. 1998 Dec;7(13):2121-8.; PMID: 9817930). An additional band of unknown identity was also consistently observed at 37kDa. This band was successfully blocked by incubation with the immunizing peptide. Recommended concentration. 1-3µg/ml. Primary incubation 1 hour at room temperature.

**Immunofluorescence:** Strong expression of the protein seen in the cytoplasm of A431 and HeLa cells. Recommended concentration: 10µg/ml.

**Flow Cytometry:** Flow cytometric analysis of HeLa cells. Recommended concentration: 10ug/ml.

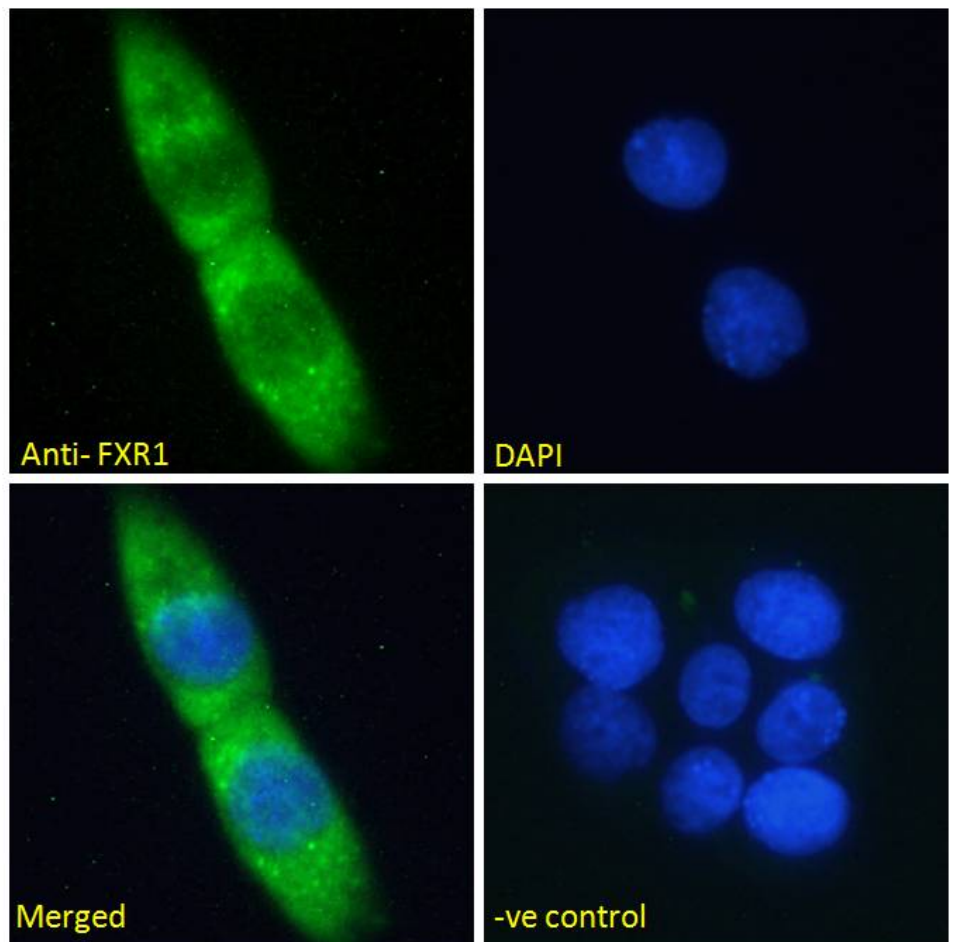
### Species Reactivity

**Tested:** Human, Mouse

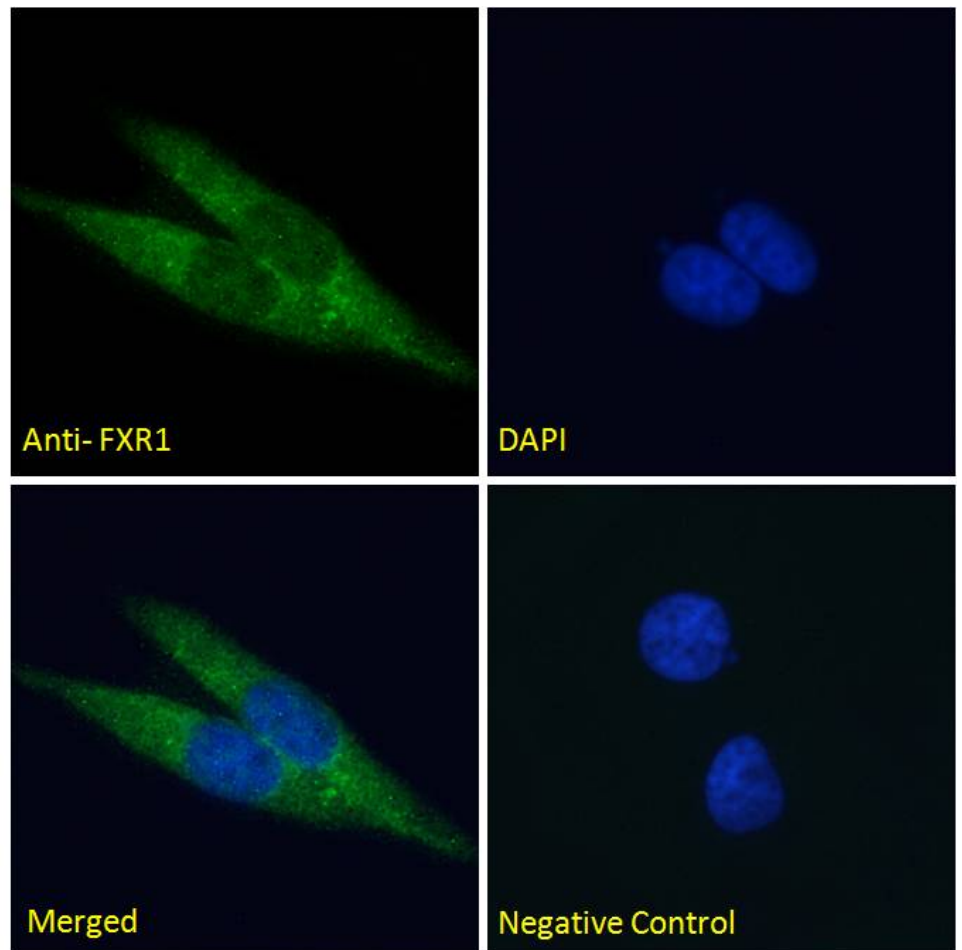
**Expected from sequence similarity:** Human, Mouse, Rat, Dog, Cow



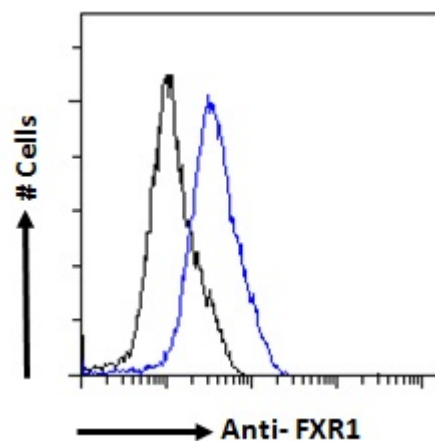
EB07361 (1 $\mu$ g/ml) staining of NIH-3T3 cell lysate (35 $\mu$ g protein in RIPA buffer). Detected by chemiluminescence.



EB07361 Immunofluorescence analysis of paraformaldehyde fixed A431 cells, permeabilized with 0.15% Triton. Primary incubation 1hr (10ug/ml) followed by Alexa Fluor 488 secondary antibody (2ug/ml), showing cytoplasmic staining. The nuclear stain is DAPI (blue). Negative control: Unimmunized goat IgG (10ug/ml) followed by Alexa Fluor 488 secondary antibody (2ug/ml).



EB07361 Immunofluorescence analysis of paraformaldehyde fixed HeLa cells, permeabilized with 0.15% Triton. Primary incubation 1hr (10ug/ml) followed by Alexa Fluor 488 secondary antibody (2ug/ml), showing cytoplasmic staining. The nuclear stain is DAPI (blue). Negative control: Unimmunized goat IgG (10ug/ml) followed by Alexa Fluor 488 secondary antibody (2ug/ml).



EB07361 Flow cytometric analysis of paraformaldehyde fixed HeLa cells (blue line), permeabilized with 0.5% Triton. Primary incubation 1hr (10ug/ml) followed by Alexa Fluor 488 secondary antibody (1ug/ml). IgG control: Unimmunized goat IgG (black line) followed by Alexa Fluor 488 secondary antibody.