

International Office

Everest Biotech Ltd

Vector Laboratories, Inc.
6737 Mowry Ave
Newark, CA 94560
United States

Customer Service:

customerservice@vectorlabs.com

Technical Service:

technical@vectorlabs.com

Tel: +1 (800) 227-6666

www.everestbiotech.com

**Research Use Only. Not for
diagnostic or therapeutic use.**

EB05153-T - Goat Anti-FYN Antibody - Trial

Size: 20µg specific antibody in 40µl



Target Protein

Principal Names: FYN, SLK, SYN, MGC45350, FYN oncogene related to SRC, FGR, YES, src-like kinase, c-syn protooncogene, tyrosine kinase p59fyn(T), src/yes-related novel gene, OKT3-induced calcium influx regulator, proto-oncogene tyrosine-protein kinase fyn, RP1-66H14.1, OTTHUMP00000017917, protein-tyrosine kinase fyn, src-like kinase

Official Symbol: FYN

Accession Number(s): NP_002028.1; NP_694592.1; NP_694593.1

Human GeneID(s): [2534](#)

Non-Human GeneID(s): 14360 (mouse), 25150 (rat)

Important Comments: This antibody is expected to recognise all three reported isoforms (as represented by NP_002028.1; NP_694592.1; NP_694593.1).

Immunogen

Peptide with sequence VQCKDKEATKLTE, from the N Terminus of the protein sequence according to NP_002028.1; NP_694592.1; NP_694593.1.

Please note the [peptide](#) is available for sale.

Purification and Storage

Purified from goat serum by ammonium sulphate precipitation followed by antigen affinity chromatography using the immunizing peptide.

Supplied at 0.5 mg/ml in Tris saline, 0.02% sodium azide, pH7.3 with 0.5% bovine serum albumin.

Aliquot and store at -20°C. Minimize freezing and thawing.

Applications Tested

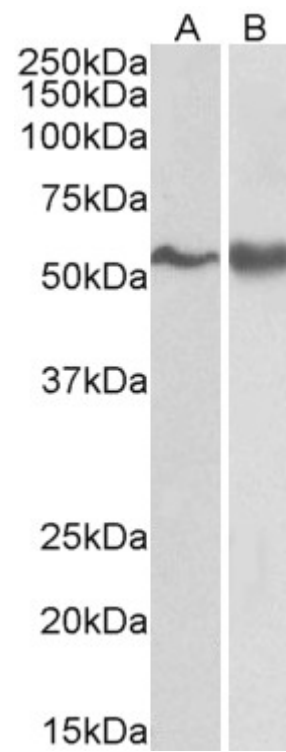
Peptide ELISA: antibody detection limit dilution 1:32000.

Western blot: Approx 55kDa band observed in lysates of cell lines A431 and Jurkat (calculated MW of 54.5kDa according to NP_694593.1). Recommended for use at 0.3-1µg/ml.

Species Reactivity

Tested: Human

Expected from sequence similarity: Human, Mouse, Rat, Dog, Pig, Cow



EB05153 (0.3 μ g/ml) staining of A431 (A) and Jurkat lysate (B) (35 μ g protein in RIPA buffer). Primary incubation was 1 hour. Detected by chemiluminescence.