



## UK Office

### Everest Biotech Ltd

Cherwell Innovation Centre  
77 Heyford Park  
Upper Heyford  
Oxfordshire  
OX25 5HD  
UK

Enquiries:

[info@everestbiotech.com](mailto:info@everestbiotech.com)

Sales:

[sales@everestbiotech.com](mailto:sales@everestbiotech.com)

Tech support:

[support@everestbiotech.com](mailto:support@everestbiotech.com)

Tel: +44 (0)1869 238326

Fax: +44 (0)1869 238327

## US Office

### Everest Biotech c/o Abcore

405 Maple Street, Suite A106  
Ramona,  
CA 92065  
USA

Inquiries:

[info@everestbiotech.com](mailto:info@everestbiotech.com)

Sales:

[usasales@everestbiotech.com](mailto:usasales@everestbiotech.com)

Tech support:

[support@everestbiotech.com](mailto:support@everestbiotech.com)

Tel: 888-320-4628 (toll-free)

Fax: 888-841-9041

[www.everestbiotech.com](http://www.everestbiotech.com)

**Research Use Only. Not for  
diagnostic or therapeutic use.**

## EB07028 - Goat Anti-FZD8 / frizzled 8 Antibody

Size: 100µg specific antibody in 200µl



### Target Protein

**Principal Names:** FZD8, frizzled homolog 8 (Drosophila), HGNC:4046, FZ-8, hFZ8, frizzled (Drosophila) homolog 8, frizzled 8

**Official Symbol:** FZD8

**Accession Number(s):** NP\_114072.1

**Human GeneID(s):** [8325](#)

**Non-Human GeneID(s):** 14370 (mouse)

### Immunogen

Peptide with sequence C-SYPKQMPLSQV, from the C Terminus of the protein sequence according to NP\_114072.1.

Please note the [peptide](#) is available for sale.

### Purification and Storage

Purified from goat serum by ammonium sulphate precipitation followed by antigen affinity chromatography using the immunizing peptide.

Supplied at 0.5 mg/ml in Tris saline, 0.02% sodium azide, pH7.3 with 0.5% bovine serum albumin.

Aliquot and store at -20°C. Minimize freezing and thawing.

### Applications Tested

**Peptide ELISA:** antibody detection limit dilution 1:32000.

**Western blot:** Approx 75kDa band observed in Human Pancreas lysates (calculated MW of 73.3kDa according to NP\_114072.1). Recommended concentration: 1-3µg/ml. Primary incubation was 1 hour. This antibody has been successfully used in WB on Mouse: Zhao B et al. (2019) PMID: 21321602.

**IHC:** Paraffin embedded Human Pancreas. Recommended concentration: 3µg/ml.

**Immunofluorescence:** This antibody has been successfully used in IF on Mouse: Zhao B et al. (2019) PMID: 21321602.

**Additional validation:** This antibody was successfully used in Electron microscopy (immunogold staining): Zhao B et al. (2019) PMID: 21321602.

### Species Reactivity

**Tested:** Human

**Expected from sequence similarity:** Human, Mouse, Rat, Dog, Cow

### Specific Reference

**This antibody has been successfully used in WB, IF & EM on Mouse:**

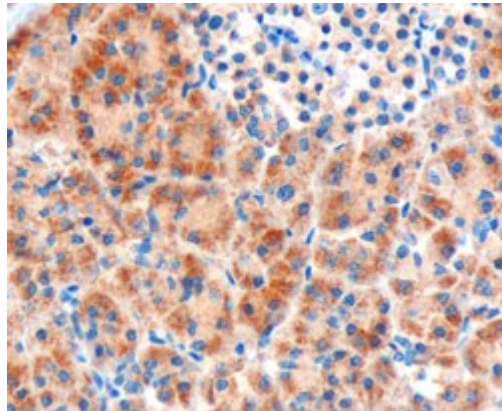
Zhao B, Wang HB, Lu YJ, Hu JW, Bao L, Zhang X.

Transport of receptors, receptor signaling complexes and ion channels via neuropeptide-secretory vesicles. *Cell Res.* 2011 May;21(5):741-53.

PMID: 21321602



EB07028 (1 $\mu$ g/ml) staining of Human Pancreas lysate (35 $\mu$ g protein in RIPA buffer). Detected by chemiluminescence.



EB07028 (3 $\mu$ g/ml) staining of paraffin embedded Human Pancreas. Microwaved antigen retrieval with Tris/EDTA buffer pH9, HRP-