



International Office

Everest Biotech Ltd

Vector Laboratories, Inc.
6737 Mowry Ave
Newark, CA 94560
United States

Customer Service:

customerservice@vectorlabs.com

Technical Service:

technical@vectorlabs.com

Tel: +1 (800) 227-6666

www.everestbiotech.com

**Research Use Only. Not for
diagnostic or therapeutic use.**

EB07823 - Goat Anti-G6PD (aa 305 - 318) Antibody

Size: 100µg specific antibody in 200µl



Target Protein

Principal Names: G6PD, glucose-6-phosphate dehydrogenase, G6PD1, glucose-6-phosphate 1-dehydrogenase, glucose-6-phosphate dehydrogenase, G6PD

Official Symbol: G6PD

Accession Number(s): NP_000393.4 ; NP_001035810.1

Human GeneID(s): [2539](#)

Non-Human GeneID(s): 14381 (mouse), 24377 (rat)

Important Comments: This antibody is expected to recognise both reported isoforms (NP_000393.4 and NP_001035810.1).

Immunogen

Peptide with sequence C-KPASTNSDDVRDEK, from the internal region of the protein sequence according to NP_000393.4 ; NP_001035810.1.

Please note the [peptide](#) is available for sale.

Purification and Storage

Purified from goat serum by ammonium sulphate precipitation followed by antigen affinity chromatography using the immunizing peptide.

Supplied at 0.5 mg/ml in Tris saline, 0.02% sodium azide, pH7.3 with 0.5% bovine serum albumin.

Aliquot and store at -20°C. Minimize freezing and thawing.

Applications Tested

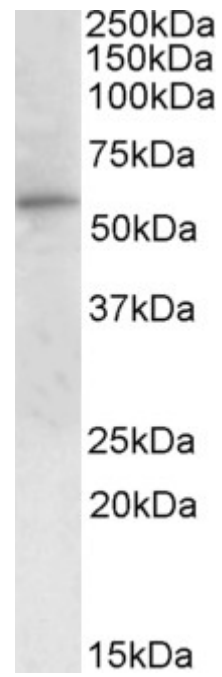
Peptide ELISA: antibody detection limit dilution 1:8000.

Western blot: Approx 55kDa band observed in Human Peripheral Blood Mononucleocyte lysates (calculated MW of 59.3kDa according to NP_001035810.1). Recommended concentration: 1-3µg/ml.

Species Reactivity

Tested: Human

Expected from sequence similarity: Human, Mouse, Rat, Dog



EB07823 (1µg/ml) staining of Peripheral Blood Mononucleocytes lysate (35µg protein in RIPA buffer). Primary incubation was 1 hour. Detected by chemiluminescence.