



UK Office

Everest Biotech Ltd

Cherwell Innovation Centre
77 Heyford Park
Upper Heyford
Oxfordshire
OX25 5HD
UK

Enquiries:

info@everestbiotech.com

Sales:

sales@everestbiotech.com

Tech support:

support@everestbiotech.com

Tel: +44 (0)1869 238326

www.everestbiotech.com

**Research Use Only. Not for
diagnostic or therapeutic use.**

EB12688 - Goat Anti-GABRG2 (aa384-396) Antibody

Size: 100µg specific antibody in 200µl



Target Protein

Principal Names: GABRG2, gamma-aminobutyric acid (GABA) A receptor, gamma 2, CAE2, ECA2, GEFSP3, GABA(A) receptor subunit gamma-2, GABA(A) receptor, gamma 2, gamma-aminobutyric acid receptor subunit gamma-2

Official Symbol: GABRG2

Accession Number(s): NP_944494.1; NP_000807.2; NP_944493.2

Human GeneID(s): [2566](#)

Non-Human GeneID(s): 14406 (mouse), 29709 (rat)

Important Comments: This antibody is expected to recognize all three reported isoforms (NP_944494.1; NP_000807.2; NP_944493.2).

Immunogen

Peptide with sequence C-KAPTIDIRPRSAT, from the internal region of the protein sequence according to NP_944494.1; NP_000807.2; NP_944493.2.

Please note the [peptide](#) is available for sale.

Purification and Storage

Purified from goat serum by ammonium sulphate precipitation followed by antigen affinity chromatography using the immunizing peptide.

Supplied at 0.5 mg/ml in Tris saline, 0.02% sodium azide, pH7.3 with 0.5% bovine serum albumin.

Aliquot and store at -20°C. Minimize freezing and thawing.

Applications Tested

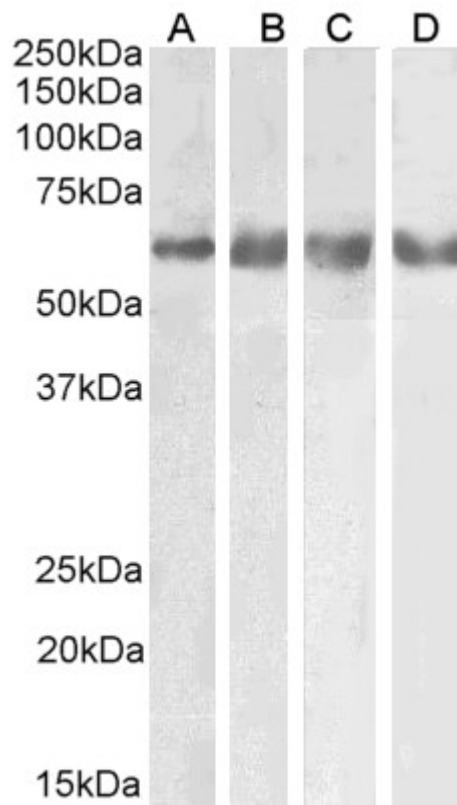
Peptide ELISA: antibody detection limit dilution 1:16000.

Western blot: Approx 60kDa band observed in Human, Mouse, Rat and Pig Brain lysates (calculated MW of 59.3kDa according to Human NP_944493.2, 55.0kDa according to Mouse NP_032099.1, 54.0kDa according to Rat NP_899156.1 and 55.2kDa according to Pig XP_003134135.1). Recommended concentration: 0.1-0.3µg/ml.

Species Reactivity

Tested: Human, Mouse, Rat, Pig

Expected from sequence similarity: Human, Mouse, Rat, Dog, Pig, Cow



EB12688 (0.1 μ g/ml) staining of Human Cerebellum (A), Mouse (B), Rat (C) and Pig (D) Brain lysate (35 μ g protein in RIPA buffer). Primary incubation was 1 hour. Detected by chemiluminescence.