

International Office

Everest Biotech Ltd

Vector Laboratories, Inc.
6737 Mowry Ave
Newark, CA 94560
United States

Customer Service:

customerservice@vectorlabs.com

Technical Service:

technical@vectorlabs.com

Tel: +1 (800) 227-6666

www.everestbiotech.com

**Research Use Only. Not for
diagnostic or therapeutic use.**

EB10779 - Goat Anti-GABRG2 Antibody

Size: 100µg specific antibody in 200µl



Target Protein

Principal Names: GABRG2, gamma-aminobutyric acid (GABA) A receptor, gamma 2, CAE2, ECA2, GEFSP3, GABA(A) receptor subunit gamma-2, gamma-aminobutyric acid receptor subunit gamma-2

Official Symbol: GABRG2

Accession Number(s): NP_944494.1; NP_000807.2; NP_944493.2

Human GeneID(s): [2566](#)

Non-Human GeneID(s): 14406 (mouse), 29709 (rat)

Important Comments: This antibody is expected to recognize all three reported isoforms (NP_944494.1; NP_000807.2; NP_944493.2).

Immunogen

Peptide with sequence KSDDDYEDYASNK-C, from the N Terminus (mature) of the protein sequence according to NP_944494.1; NP_000807.2; NP_944493.2.

Please note the [peptide](#) is available for sale.

Purification and Storage

Purified from goat serum by ammonium sulphate precipitation followed by antigen affinity chromatography using the immunizing peptide.

Supplied at 0.5 mg/ml in Tris saline, 0.02% sodium azide, pH7.3 with 0.5% bovine serum albumin.

Aliquot and store at -20°C. Minimize freezing and thawing.

Applications Tested

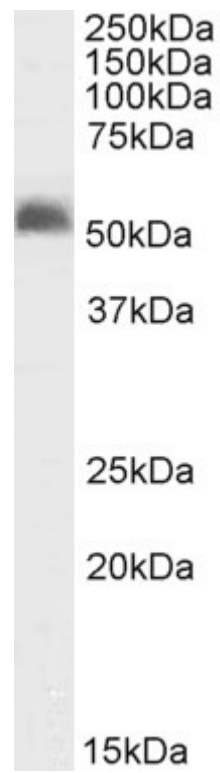
Peptide ELISA: antibody detection limit dilution 1:64000.

Western blot: Approx 55kDa band observed in Rat Brain lysates (calculated MW of 54.0kDa according to Rat NP_899156.1). Recommended concentration: 1-3µg/ml.

Species Reactivity

Tested: Rat

Expected from sequence similarity: Human, Mouse, Rat, Dog, Pig, Cow



EB10779 (2 μ g/ml) staining of Rat Brain lysate (35 μ g protein in RIPA buffer). Primary incubation was 1 hour.
Detected by chemiluminescence.