



International Office

Everest Biotech Ltd

Vector Laboratories, Inc.
6737 Mowry Ave
Newark, CA 94560
United States

Customer Service:

customerservice@vectorlabs.com

Technical Service:

technical@vectorlabs.com

Tel: +1 (800) 227-6666

www.everestbiotech.com

**Research Use Only. Not for
diagnostic or therapeutic use.**

EB06730 - Goat Anti-GAD2 / GAD65 Antibody

Size: 100µg specific antibody in 200µl



Target Protein

Principal Names: GAD2, GAD65, glutamate decarboxylase 2 (pancreatic islets and brain, 65kDa), Glutamate decarboxylase-2 (pancreas), glutamate decarboxylase 2 (pancreatic islets and brain, 65kD), RP11-420F12.2, MGC161605, MGC161607, Glutamate decarboxylase-2 (pancreas)

Official Symbol: GAD2

Accession Number(s): NP_000809.1; NP_001127838.1

Human GeneID(s): [2572](#)

Important Comments: This antibody is expected to recognise both reported variants.

Immunogen

Peptide with sequence C-TLEDNEERMSRLSK, from the internal region of the protein sequence according to NP_000809.1; NP_001127838.1.

Please note the [peptide](#) is available for sale.

Purification and Storage

Purified from goat serum by ammonium sulphate precipitation followed by antigen affinity chromatography using the immunizing peptide.

Supplied at 0.5 mg/ml in Tris saline, 0.02% sodium azide, pH7.3 with 0.5% bovine serum albumin.

Aliquot and store at -20°C. Minimize freezing and thawing.

Applications Tested

Peptide ELISA: antibody detection limit dilution 1:32000.

Western blot: Approx 65kDa band observed in Human Brain (Hippocampus) lysates (calculated MW of 65.4kDa according to NP_000809.1). Recommended concentration: 0.5-1.5µg/ml. Primary incubation was 1 hour.

IHC: Paraffin embedded Human Brain (Cortex). Recommended concentration: 6-8µg/ml.

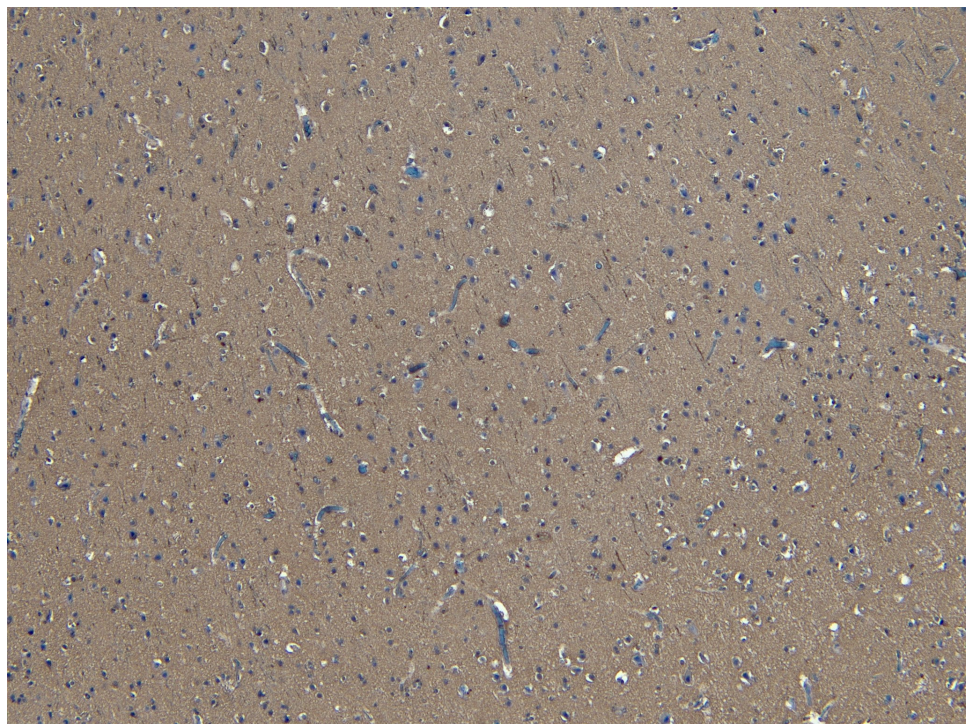
Species Reactivity

Tested: Human

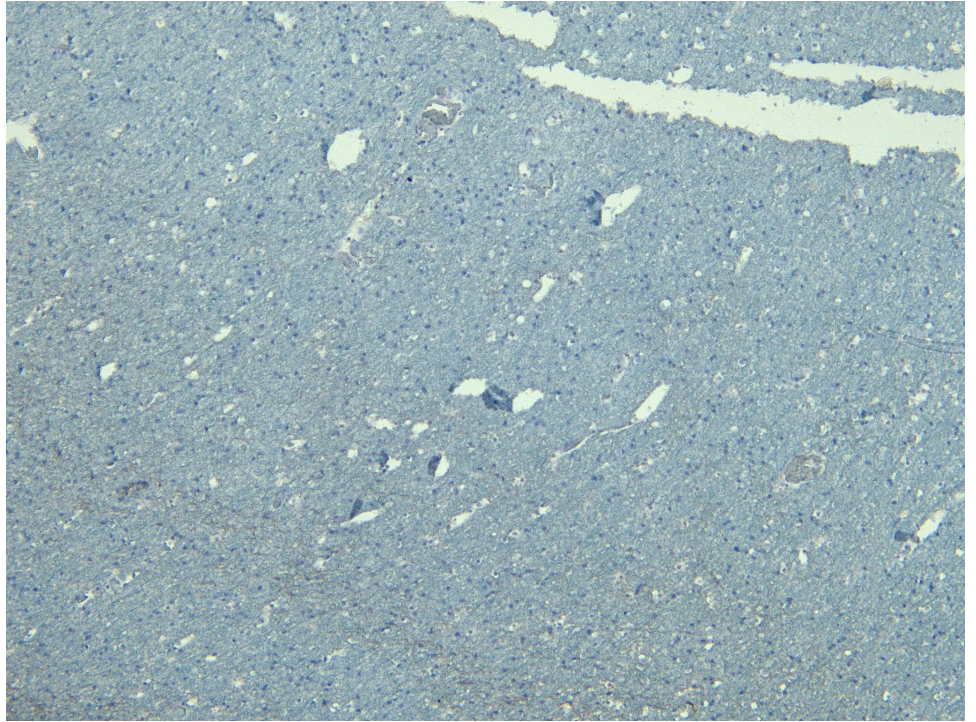
Expected from sequence similarity: Human, Mouse, Rat, Dog



EB06730 (0.5µg/ml) staining of Human Brain (Hippocampus) lysate (35µg protein in RIPA buffer). Detected by chemiluminescence.



EB06730 (6µg/ml) staining of paraffin embedded Human Cortex. Heat induced antigen retrieval with citrate buffer pH 6, HRP-staining.



EB06730 Negative Control showing staining of paraffin embedded Human Cortex, with no primary antibody.