

International Office

Everest Biotech Ltd

Vector Laboratories, Inc.
6737 Mowry Ave
Newark, CA 94560
United States

Customer Service:

customerservice@vectorlabs.com

Technical Service:

technical@vectorlabs.com

Tel: +1 (800) 227-6666

www.everestbiotech.com

**Research Use Only. Not for
diagnostic or therapeutic use.**

EB11071 - Goat Anti-GAD25 / GAD67 Antibody

Size: 100µg specific antibody in 200µl



Target Protein

Principal Names: 67 kDa glutamic acid decarboxylase, FLJ45882, GAD, GAD-67, glutamate decarboxylase 1, glutamate decarboxylase 1 (brain, 67kDa), glutamate decarboxylase 67 kDa isoform, OTTHUMP00000204990, OTTHUMP00000204993, OTTHUMP00000204994, OTTHUMP00000204995, SCP, GAD1

Official Symbol: GAD1

Accession Number(s): NP_038473.2; NP_000808.2

Human GeneID(s): [2571](#)

Important Comments: This antibody is expected to recognize both reported isoforms (NP_038473.2; NP_000808.2).

Immunogen

Peptide with sequence C-QRTNSLEEKSR, from the internal region of the protein sequence according to NP_038473.2; NP_000808.2.

Please note the [peptide](#) is available for sale.

Purification and Storage

Purified from goat serum by ammonium sulphate precipitation followed by antigen affinity chromatography using the immunizing peptide.

Supplied at 0.5 mg/ml in Tris saline, 0.02% sodium azide, pH7.3 with 0.5% bovine serum albumin.

Aliquot and store at -20°C. Minimize freezing and thawing.

Applications Tested

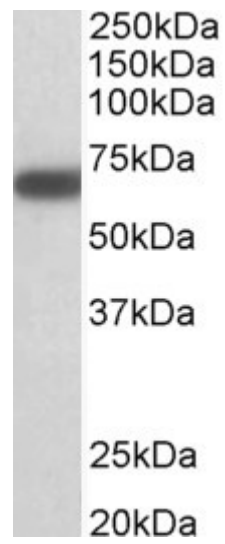
Peptide ELISA: antibody detection limit dilution 1:8000.

Western blot: Approx 70kDa band observed in Mouse Brain lysates (calculated MW of 66.6kDa according to Mouse NP_032103.2). Recommended concentration: 1-3µg/ml.

Species Reactivity

Tested: Mouse

Expected from sequence similarity: Human, Mouse, Rat, Pig, Dog, Cow



EB11071 (1 μ g/ml) staining of Mouse Brain lysate (35 μ g protein in RIPA buffer). Primary incubation was 1 hour.
Detected by chemiluminescence.