

International Office

Everest Biotech Ltd

Vector Laboratories, Inc.
6737 Mowry Ave
Newark, CA 94560
United States

Customer Service:

customerservice@vectorlabs.com

Technical Service:

technical@vectorlabs.com

Tel: +1 (800) 227-6666

www.everestbiotech.com

**Research Use Only. Not for
diagnostic or therapeutic use.**

EB09679 - Goat Anti-GAL Antibody

Size: 100µg specific antibody in 200µl



Target Protein

Principal Names: GAL, galanin prepropeptide, GALN, GLNN, GMAP, MGC40167, galanin, galanin-message-associated peptide, galanin-related peptide

Official Symbol: GAL

Accession Number(s): NP_057057.2

Human GeneID(s): [51083](#)

Non-Human GeneID(s): 14419 (mouse), 29141 (rat)

Immunogen

Peptide with sequence C-HRSFSDKNGLTSK, from the internal region of the protein sequence according to NP_057057.2.

Please note the [peptide](#) is available for sale.

Purification and Storage

Purified from goat serum by ammonium sulphate precipitation followed by antigen affinity chromatography using the immunizing peptide.

Supplied at 0.5 mg/ml in Tris saline, 0.02% sodium azide, pH7.3 with 0.5% bovine serum albumin.

Aliquot and store at -20°C. Minimize freezing and thawing.

Applications Tested

Peptide ELISA: antibody detection limit dilution 1:64000.

Western blot: Approx 16kDa band observed in Human Cerebellum lysates and approx. 15kDa in preliminary testing of Rat Brain lysate (calculated MW of 13.3kDa according to NP_057057.2). Recommended concentration: 1-2µg/ml. Primary incubation 1 hour at room temperature.

Species Reactivity

Tested: Human

Expected from sequence similarity: Human, Mouse, Rat, Cow

Specific Reference

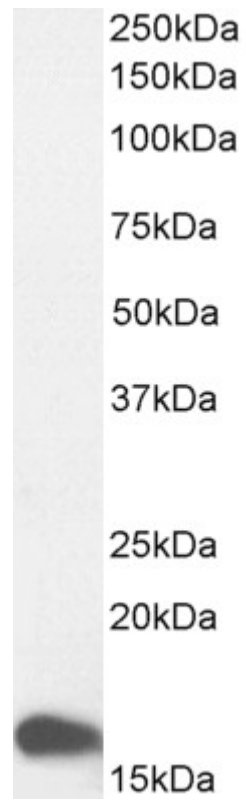
This antibody (previous batch) has been successfully used in IHC on Human:

Skrapits K, Borsay BÁ, Herczeg L, Ciofi P, Liposits Z, Hrabovszky E.

Neuropeptide co-expression in hypothalamic kisspeptin neurons of laboratory animals and the human.

Front Neurosci. 2015 Feb 10;9:29.

PMID: 25713511



EB09679 (1 μ g/ml) staining of Human Cerebellum lysate (35 μ g protein in RIPA buffer). Detected by chemiluminescence.