



## International Office

### Everest Biotech Ltd

Vector Laboratories, Inc.  
6737 Mowry Ave  
Newark, CA 94560  
United States

Customer Service:

[customerservice@vectorlabs.com](mailto:customerservice@vectorlabs.com)

Technical Service:

[technical@vectorlabs.com](mailto:technical@vectorlabs.com)

Tel: +1 (800) 227-6666

[www.everestbiotech.com](http://www.everestbiotech.com)

**Research Use Only. Not for  
diagnostic or therapeutic use.**

## EB10777 - Goat Anti-galectin-1 (mouse) Antibody

Size: 100µg specific antibody in 200µl



### Target Protein

**Principal Names:** Lgals1, lectin, galactose binding, soluble 1, AA410090, Gal-1, Galbp, L-14.5, L14, Lect14, galectin-1, S-Lac lectin 1, beta-galactoside binding protein, beta-galactoside-binding lectin L-14-I, galaptin, galectin-1, lactose-binding lectin 1

**Official Symbol:** Lgals1

**Accession Number(s):** NP\_032521.1

**Human GeneID(s):** [3956](#)

**Non-Human GeneID(s):** 16852 (mouse), 56646 (rat)

### Immunogen

Peptide with sequence KPGECLKVRGEVASD, from the N Terminus (near) of the protein sequence according to NP\_032521.1.

Please note the [peptide](#) is available for sale.

### Purification and Storage

Purified from goat serum by ammonium sulphate precipitation followed by antigen affinity chromatography using the immunizing peptide.

Supplied at 0.5 mg/ml in Tris saline, 0.02% sodium azide, pH7.3 with 0.5% bovine serum albumin.

Aliquot and store at -20°C. Minimize freezing and thawing.

### Applications Tested

**Peptide ELISA:** antibody detection limit dilution 1:8000.

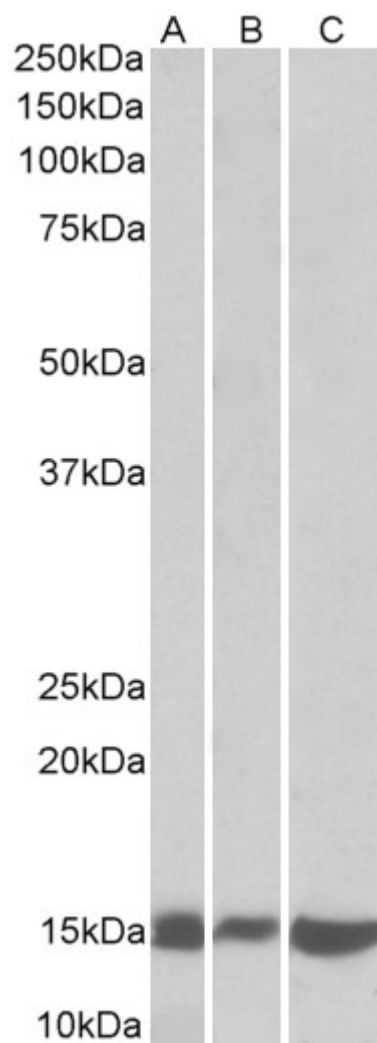
**Western blot:** Approx 15kDa band observed in lysates of Mouse and Rat Pancreas and of cell line NIH3T3 (calculated MW of 14.9kDa according to NP\_032521.1).

Recommended concentration: 0.1-0.3µg/ml.

### Species Reactivity

**Tested:** Mouse, Rat

**Expected from sequence similarity:** Human, Mouse, Rat, Pig, Cow



EB10777 (0.1 µg/ml) staining of Mouse (A) and Rat (B) Pancreas lysates and NIH3T3 (C) lysate (35 µg protein in RIPA buffer). Primary incubation was 1 hour. Detected by chemiluminescence.