



## UK Office

### Everest Biotech Ltd

Cherwell Innovation Centre  
77 Heyford Park  
Upper Heyford  
Oxfordshire  
OX25 5HD  
UK

Enquiries:

[info@everestbiotech.com](mailto:info@everestbiotech.com)

Sales:

[sales@everestbiotech.com](mailto:sales@everestbiotech.com)

Tech support:

[support@everestbiotech.com](mailto:support@everestbiotech.com)

Tel: +44 (0)1869 238326

Fax: +44 (0)1869 238327

## US Office

### Everest Biotech c/o Abcore

405 Maple Street, Suite A106  
Ramona,  
CA 92065  
USA

Inquiries:

[info@everestbiotech.com](mailto:info@everestbiotech.com)

Sales:

[usasales@everestbiotech.com](mailto:usasales@everestbiotech.com)

Tech support:

[support@everestbiotech.com](mailto:support@everestbiotech.com)

Tel: 888-320-4628 (toll-free)

Fax: 888-841-9041

[www.everestbiotech.com](http://www.everestbiotech.com)

**Research Use Only. Not for  
diagnostic or therapeutic use.**

## EB10775 - Goat Anti-galectin-3 (mouse) Antibody

Size: 100µg specific antibody in 200µl



### Target Protein

**Principal Names:** Lgals3, lectin, galactose binding, soluble 3, GBP, L-34, Mac-2, gal3, 35 kDa lectin, CBP 35, L-34 galactoside-binding lectin, OTTMUSP00000043689, OTTMUSP00000043690, carbohydrate-binding protein 35, gal-3, galactose-specific lectin 3

**Official Symbol:** Lgals3

**Accession Number(s):** NP\_034835.1

**Non-Human GeneID(s):** 16854 (mouse)

**Important Comments:** Reported variants represent identical protein: NP\_001139425.1, NP\_034835.1

### Immunogen

Peptide with sequence C-NANRIVLDFRRGND, from the internal region of the protein sequence according to NP\_034835.1.

Please note the [peptide](#) is available for sale.

### Purification and Storage

Purified from goat serum by ammonium sulphate precipitation followed by antigen affinity chromatography using the immunizing peptide.

Supplied at 0.5 mg/ml in Tris saline, 0.02% sodium azide, pH7.3 with 0.5% bovine serum albumin.

Aliquot and store at -20°C. Minimize freezing and thawing.

### Applications Tested

**Peptide ELISA:** antibody detection limit dilution 1:4000.

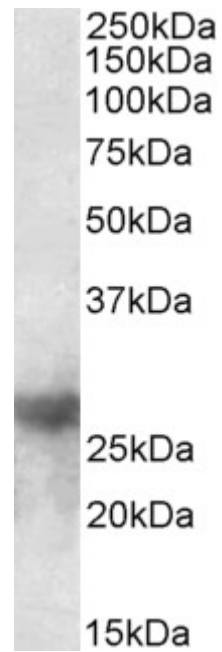
**Western blot:** Approx 26kDa band observed in Mouse Heart lysates (calculated MW of 27.4kDa according to NP\_034835.1). Recommended concentration: 0.5-2µg/ml. Primary incubation was 1 hour.

**IHC:** Paraffin embedded Human Colon. Recommended concentration: 10µg/ml.

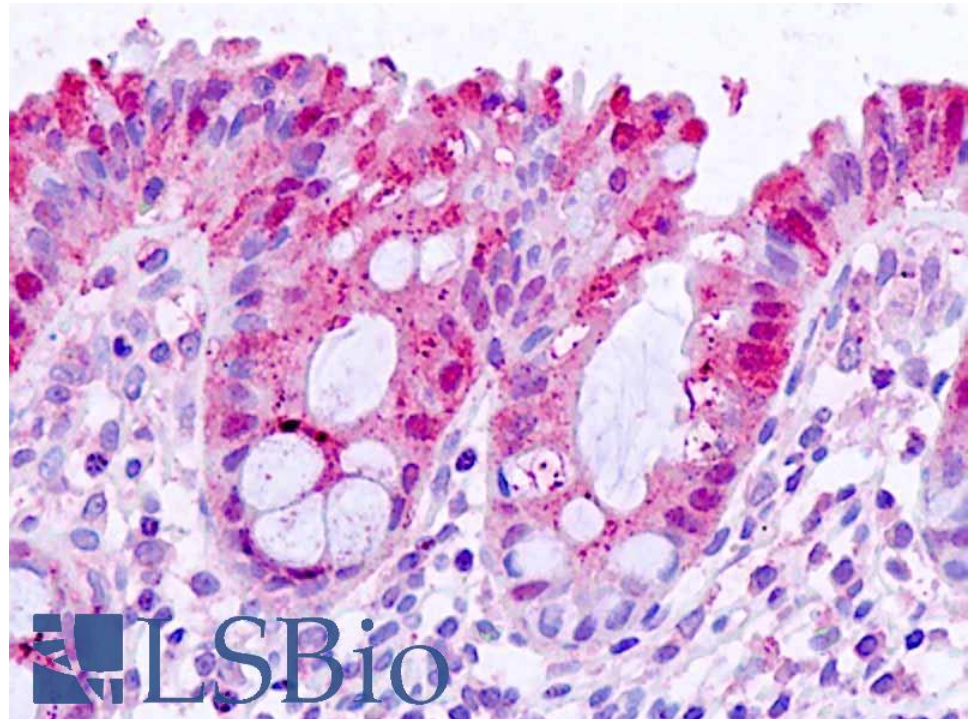
### Species Reactivity

**Tested:** Human, Mouse

**Expected from sequence similarity:** Mouse



EB10775 (0.5 $\mu$ g/ml) staining of Mouse Heart lysate (35 $\mu$ g protein in RIPA buffer). Detected by chemiluminescence.



EB10775 (10 $\mu$ g/ml) staining of paraffin embedded Human Colon. Steamed antigen retrieval with citrate buffer pH 6, AP-staining.