



## UK Office

### Everest Biotech Ltd

Cherwell Innovation Centre  
77 Heyford Park  
Upper Heyford  
Oxfordshire  
OX25 5HD  
UK

Enquiries:

[info@everestbiotech.com](mailto:info@everestbiotech.com)

Sales:

[sales@everestbiotech.com](mailto:sales@everestbiotech.com)

Tech support:

[support@everestbiotech.com](mailto:support@everestbiotech.com)

Tel: +44 (0)1869 238326

Fax: +44 (0)1869 238327

## US Office

### Everest Biotech c/o Abcore

405 Maple Street, Suite A106  
Ramona,  
CA 92065  
USA

Inquiries:

[info@everestbiotech.com](mailto:info@everestbiotech.com)

Sales:

[usasales@everestbiotech.com](mailto:usasales@everestbiotech.com)

Tech support:

[support@everestbiotech.com](mailto:support@everestbiotech.com)

Tel: 888-320-4628 (toll-free)

Fax: 888-841-9041

[www.everestbiotech.com](http://www.everestbiotech.com)

**Research Use Only. Not for  
diagnostic or therapeutic use.**

## EB07563 - Goat Anti-GALR1 (internal) Antibody

Size: 100µg specific antibody in 200µl



## Target Protein

**Principal Names:** GALR1, galanin receptor 1, GALNR, GALNR1

**Official Symbol:** GALR1

**Accession Number(s):** NP\_001471.2

**Human GeneID(s):** [2587](#)

**Non-Human GeneID(s):** 14427 (mouse), 50577 (rat)

## Immunogen

Peptide with sequence C-RSKPGKPRSTTN, from the internal region of the protein sequence according to NP\_001471.2.

Please note the [peptide](#) is available for sale.

## Purification and Storage

Purified from goat serum by ammonium sulphate precipitation followed by antigen affinity chromatography using the immunizing peptide.

Supplied at 0.5 mg/ml in Tris saline, 0.02% sodium azide, pH7.3 with 0.5% bovine serum albumin.

Aliquot and store at -20°C. Minimize freezing and thawing.

## Applications Tested

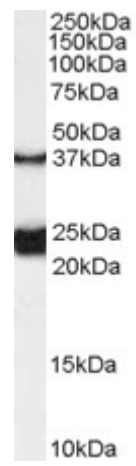
**Peptide ELISA:** antibody detection limit dilution 1:128000.

**Western blot:** Approx 24-25kDa and 37kDa bands observed in lysates of Rat Spinal Cord (calculated MW of 24.9kDa according to Rat NP\_037090.1 and calculated MW of 38.9kDa according to AAC52438.1 and sp Q62805). Recommended concentration: 0.1-0.3µg/ml.

## Species Reactivity

**Tested:** Rat

**Expected from sequence similarity:** Human, Mouse, Rat, Dog, Cow



EB07563 (0.1µg/ml) staining of Rat Spinal Cord lysate (35µg protein in RIPA buffer). Primary incubation was 1 hour. Detected by chemiluminescence.