



## International Office

### Everest Biotech Ltd

Vector Laboratories, Inc.  
6737 Mowry Ave  
Newark, CA 94560  
United States

Customer Service:

[customerservice@vectorlabs.com](mailto:customerservice@vectorlabs.com)

Technical Service:

[technical@vectorlabs.com](mailto:technical@vectorlabs.com)

Tel: +1 (800) 227-6666

[www.everestbiotech.com](http://www.everestbiotech.com)

**Research Use Only. Not for  
diagnostic or therapeutic use.**

## EB06377-B - Goat Anti-GAPDH (C Terminus) Loading Control, biotinylated Antibody

Size: 100µg specific antibody in 200µl



### Target Protein

**Principal Names:** GAPDH, glyceraldehyde-3-phosphate dehydrogenase, G3PD, GAPD, HEL-S-162eP, aging-associated gene 9 protein, epididymis secretory sperm binding protein Li 162eP, peptidyl-cysteine S-nitrosylase GAPDH, HGNC:4141, MGC88685, glyceraldehyde 3-phosphate dehydrogenase

**Official Symbol:** GAPDH

**Accession Number(s):** NP\_002037.2

**Human GeneID(s):** [2597](#)

**Important Comments:** GAPDH is constitutively expressed in almost all tissues at high levels. It is therefore a useful marker when a loading/positive control is required in western blotting.

### Immunogen

Peptide with sequence C-HQVVSSDFNSDT., from the C Terminus of the protein sequence according to NP\_002037.2.

Please note the [peptide](#) is available for sale.

### Purification and Storage

Purified from goat serum by ammonium sulphate precipitation followed by antigen affinity chromatography using the immunizing peptide.

Supplied at 0.5 mg/ml in Tris saline, 0.02% sodium azide, pH7.3 with 0.5% bovine serum albumin.

Aliquot and store at -20°C. Minimize freezing and thawing.

### Applications Tested

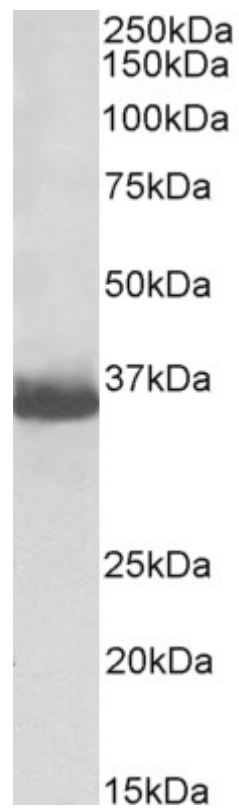
**Peptide ELISA:** antibody detection limit dilution 1:64000.

**Western blot:** Approx 35kDa band observed in lysates of cel line HEK293 (calculated MW of 36.1kDa according to NP\_002037.2). See non-biotinylated parental product's datasheet for further QC data. Recommended concentration: 0.3-1µg/ml.

### Species Reactivity

**Tested:** Human, Mouse

**Expected from sequence similarity:** Human, Mouse, Dog, Pig



Biotinylated EB06377 (0.5µg/ml) staining of HEK293 lysate (35µg protein in RIPA buffer). Primary incubation was 1 hour. Detected by chemiluminescence, using streptavidin-HRP and using NAP blocker as a substitute for skimmed milk.