



## International Office

### Everest Biotech Ltd

Vector Laboratories, Inc.  
6737 Mowry Ave  
Newark, CA 94560  
United States

Customer Service:

[customerservice@vectorlabs.com](mailto:customerservice@vectorlabs.com)

Technical Service:

[technical@vectorlabs.com](mailto:technical@vectorlabs.com)

Tel: +1 (800) 227-6666

[www.everestbiotech.com](http://www.everestbiotech.com)

**Research Use Only. Not for  
diagnostic or therapeutic use.**

## EB07992 - Goat Anti-GCC185 Antibody

Size: 100µg specific antibody in 200µl



### Target Protein

**Principal Names:** GCC2, GRIP and coiled-coil domain containing 2, GCC185, KIAA0336, CLL-associated antigen KW-11, CTCL tumor antigen se1-1, GRIP and coiled-coil domain-containing 2, GRIP coiled-coil protein GCC185, (Ran-binding protein 2-like 4)

**Official Symbol:** GCC2

**Accession Number(s):** NP\_055450.1; NP\_852118.1

**Human GeneID(s):** [9648](#)

**Important Comments:** This antibody is expected to recognise both reported isoforms (NP\_055450.1 and NP\_852118.1).

### Immunogen

Peptide with sequence C-QKLTNNKNNKIED, from the internal region of the protein sequence according to NP\_055450.1; NP\_852118.1.

Please note the [peptide](#) is available for sale.

### Purification and Storage

Purified from goat serum by ammonium sulphate precipitation followed by antigen affinity chromatography using the immunizing peptide.

Supplied at 0.5 mg/ml in Tris saline, 0.02% sodium azide, pH7.3 with 0.5% bovine serum albumin.

Aliquot and store at -20°C. Minimize freezing and thawing.

### Applications Tested

**Peptide ELISA:** antibody detection limit dilution 1:16000.

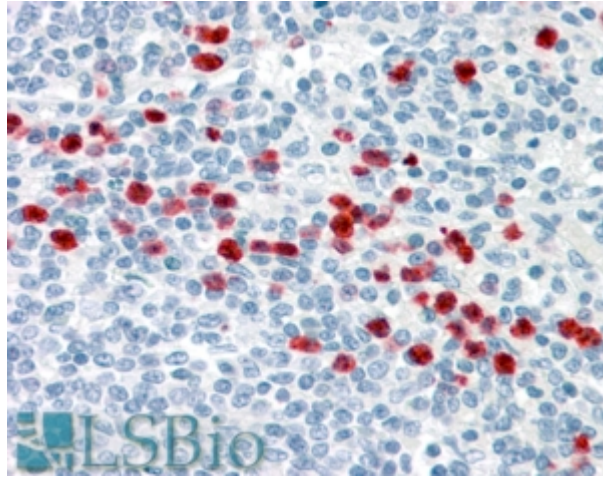
**Western blot:** Preliminary experiments gave an approx 60kDa band in Human Lymph Node and Testis lysates after 0.03µg/ml antibody staining. Please note that currently we cannot find an explanation in the literature for the band we observe given the calculated size of 185kDa according to NP\_055450.1 and of 196kDa according to NP\_852118.1. The 60kDa band was successfully blocked by incubation with the immunizing peptide.

**IHC:** Paraffin embedded Human Spleen, Small Intestine and Kidney. Recommended concentration: 3.75µg/ml.

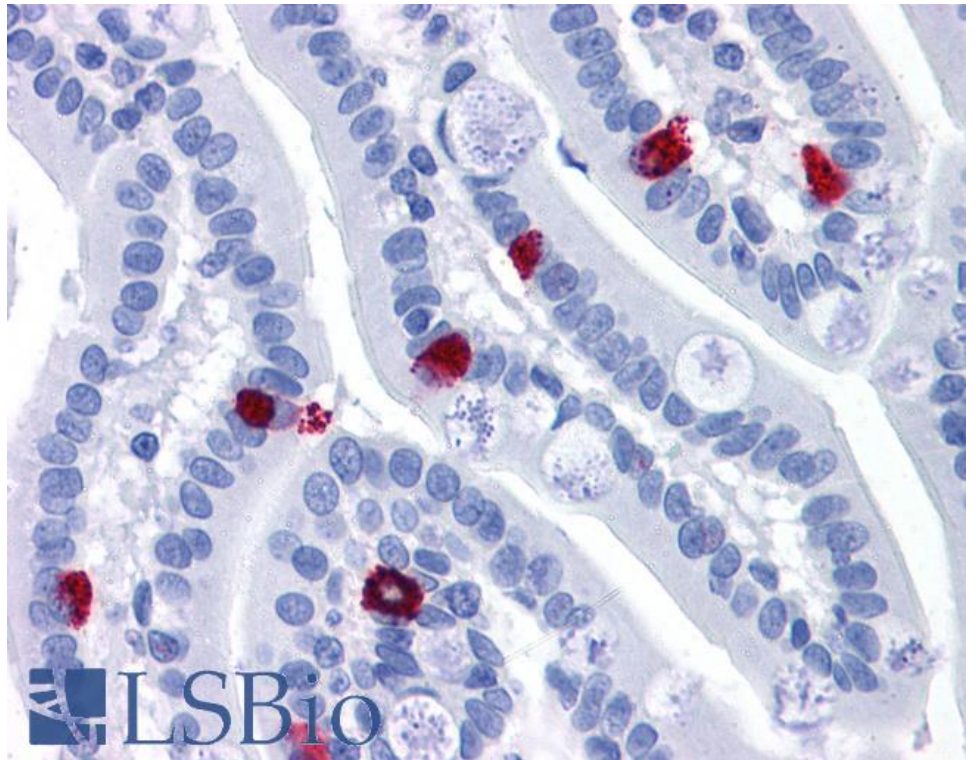
### Species Reactivity

**Tested:** Human

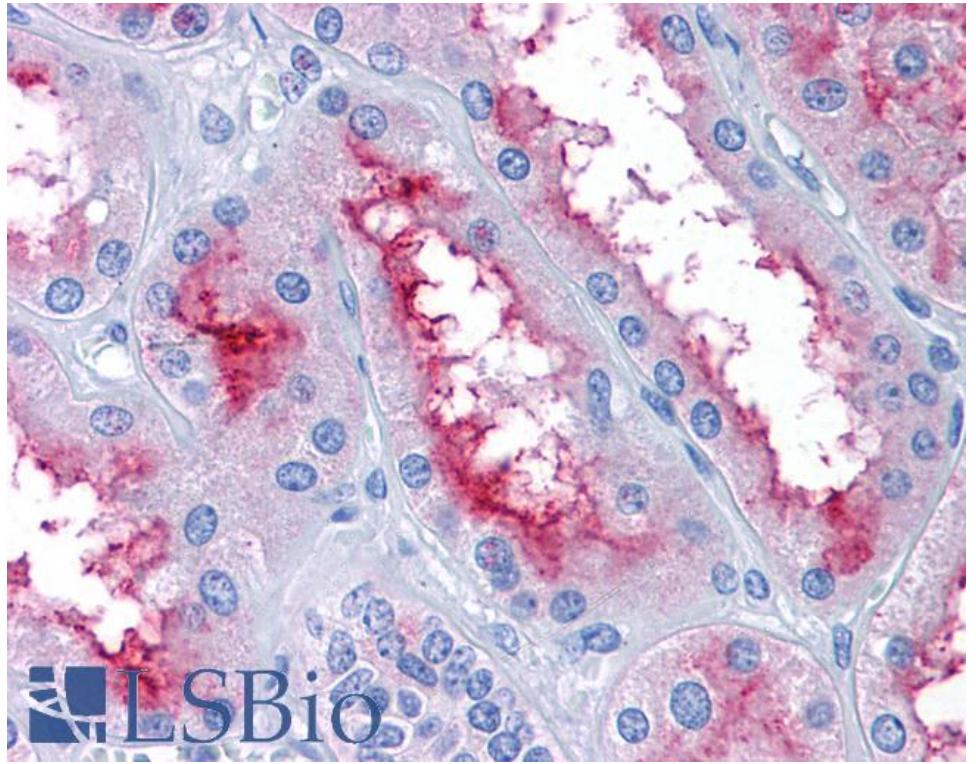
**Expected from sequence similarity:** Human, Rat



EB07992 (3.75µg/ml) staining of paraffin embedded Human Spleen. Steamed antigen retrieval with citrate buffer pH 6, AP-staining.



EB07992 (3.75µg/ml) staining of paraffin embedded Human Small Intestine. Steamed antigen retrieval with citrate buffer pH 6, AP-staining.



EB07992 (3.75µg/ml) staining of paraffin embedded Human Kidney. Steamed antigen retrieval with citrate buffer pH 6, AP-staining.