



## UK Office

### Everest Biotech Ltd

Cherwell Innovation Centre  
77 Heyford Park  
Upper Heyford  
Oxfordshire  
OX25 5HD  
UK

Enquiries:

[info@everestbiotech.com](mailto:info@everestbiotech.com)

Sales:

[sales@everestbiotech.com](mailto:sales@everestbiotech.com)

Tech support:

[support@everestbiotech.com](mailto:support@everestbiotech.com)

Tel: +44 (0)1869 238326

Fax: +44 (0)1869 238327

## US Office

### Everest Biotech c/o Abcore

405 Maple Street, Suite A106  
Ramona,  
CA 92065  
USA

Inquiries:

[info@everestbiotech.com](mailto:info@everestbiotech.com)

Sales:

[usasales@everestbiotech.com](mailto:usasales@everestbiotech.com)

Tech support:

[support@everestbiotech.com](mailto:support@everestbiotech.com)

Tel: 888-320-4628 (toll-free)

Fax: 888-841-9041

[www.everestbiotech.com](http://www.everestbiotech.com)

**Research Use Only. Not for  
diagnostic or therapeutic use.**

## EB07224-T - Goat Anti-GCDFP15 / PIP Antibody - Trial

Size: 20µg specific antibody in 40µl



### Target Protein

**Principal Names:** PIP, GCDFP15, prolactin-induced protein, HGNC:8993, GCDFP-15, GP17, GPIP4, prolactin-inducible protein, gross cystic disease fluid protein 15

**Official Symbol:** PIP

**Accession Number(s):** NP\_002643.1

**Human GeneID(s):** [5304](#)

### Immunogen

Peptide with sequence C-GANKAQDNTRK, from the internal region of the protein sequence according to NP\_002643.1.

Please note the [peptide](#) is available for sale.

### Purification and Storage

Purified from goat serum by ammonium sulphate precipitation followed by antigen affinity chromatography using the immunizing peptide.

Supplied at 0.5 mg/ml in Tris saline, 0.02% sodium azide, pH7.3 with 0.5% bovine serum albumin.

Aliquot and store at -20°C. Minimize freezing and thawing.

### Applications Tested

**Peptide ELISA:** antibody detection limit dilution 1:128000.

**Western blot:** Approx 14kDa band observed in lysates of cell line A431 (calculated MW of 16.6kDa according to NP\_002643.1). Recommended concentration: 0.3-1µg/ml.

**IHC:** In paraffin embedded Human Breast shows staining of luminal epithelial cells of the lactiferous duct. Recommended concentration: 2-3µg/ml.

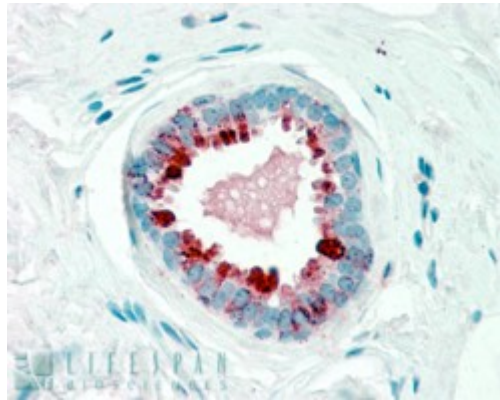
### Species Reactivity

**Tested:** Human

**Expected from sequence similarity:** Human



EB07224 (0.3µg/ml) staining of A431 cell lysate (35µg protein in RIPA buffer). Primary incubation was 1 hour.  
Detected by chemiluminescence.



EB07224 (2.5µg/ml) staining of paraffin embedded Human Breast. Steamed antigen retrieval with citrate buffer  
pH 6, AP-staining.