



## International Office

### Everest Biotech Ltd

Vector Laboratories, Inc.  
6737 Mowry Ave  
Newark, CA 94560  
United States

Customer Service:

[customerservice@vectorlabs.com](mailto:customerservice@vectorlabs.com)

Technical Service:

[technical@vectorlabs.com](mailto:technical@vectorlabs.com)

Tel: +1 (800) 227-6666

[www.everestbiotech.com](http://www.everestbiotech.com)

**Research Use Only. Not for  
diagnostic or therapeutic use.**

## EB07224 - Goat Anti-GCDFP15 / PIP Antibody

Size: 100µg specific antibody in 200µl



### Target Protein

**Principal Names:** PIP, GCDFP15, prolactin-induced protein, HGNC:8993, GCDFP-15, GP17, GPIP4, prolactin-inducible protein, gross cystic disease fluid protein 15

**Official Symbol:** PIP

**Accession Number(s):** NP\_002643.1

**Human GeneID(s):** [5304](#)

### Immunogen

Peptide with sequence C-GANKAQDNTRK, from the internal region of the protein sequence according to NP\_002643.1.

Please note the [peptide](#) is available for sale.

### Purification and Storage

Purified from goat serum by ammonium sulphate precipitation followed by antigen affinity chromatography using the immunizing peptide.

Supplied at 0.5 mg/ml in Tris saline, 0.02% sodium azide, pH7.3 with 0.5% bovine serum albumin.

Aliquot and store at -20°C. Minimize freezing and thawing.

### Applications Tested

**Peptide ELISA:** antibody detection limit dilution 1:128000.

**Western blot:** Approx 14kDa band observed in lysates of cell line A431 (calculated MW of 16.6kDa according to NP\_002643.1). Recommended concentration: 0.3-1µg/ml.

**IHC:** In paraffin embedded Human Breast shows staining of luminal epithelial cells of the lactiferous duct. Recommended concentration: 2-3µg/ml.

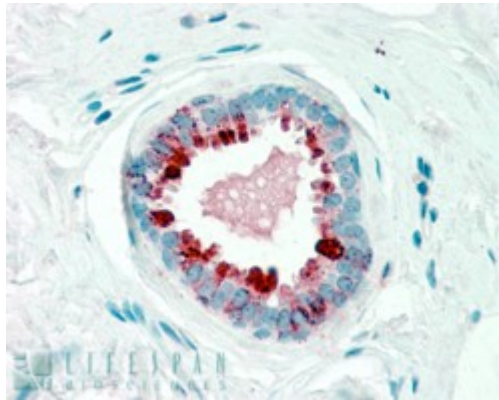
### Species Reactivity

**Tested:** Human

**Expected from sequence similarity:** Human



EB07224 (0.3 $\mu$ g/ml) staining of A431 cell lysate (35 $\mu$ g protein in RIPA buffer). Primary incubation was 1 hour.  
Detected by chemiluminescence.



EB07224 (2.5 $\mu$ g/ml) staining of paraffin embedded Human Breast. Steamed antigen retrieval with citrate buffer  
pH 6, AP-staining.