

UK Office

Everest Biotech Ltd

Cherwell Innovation Centre
77 Heyford Park
Upper Heyford
Oxfordshire
OX25 5HD
UK

Enquiries:

info@everestbiotech.com

Sales:

sales@everestbiotech.com

Tech support:

support@everestbiotech.com

Tel: +44 (0)1869 238326

www.everestbiotech.com

**Research Use Only. Not for
diagnostic or therapeutic use.**

EB05706 - Goat Anti-GCIP / MAID Antibody

Size: 100µg specific antibody in 200µl



Target Protein

Principal Names: CCNDBP1, cyclin D-type binding-protein 1, DIP1, GCIP, HHM Protein, MAID protein, grap2 cyclin interacting protein, D-type cyclin-interacting protein 1

Official Symbol: CCNDBP1

Accession Number(s): NP_036274.3; NP_411241.1

Human GeneID(s): [23582](#)

Important Comments: This antibody is expected to recognise both human isoforms of this protein.

Immunogen

Peptide with sequence C-NRIKELTQSELEL, from the C Terminus of the protein sequence according to NP_036274.3; NP_411241.1.

Please note the [peptide](#) is available for sale.

Purification and Storage

Purified from goat serum by ammonium sulphate precipitation followed by antigen affinity chromatography using the immunizing peptide.

Supplied at 0.5 mg/ml in Tris saline, 0.02% sodium azide, pH7.3 with 0.5% bovine serum albumin.

Aliquot and store at -20°C. Minimize freezing and thawing.

Applications Tested

Peptide ELISA: antibody detection limit dilution 1:32000.

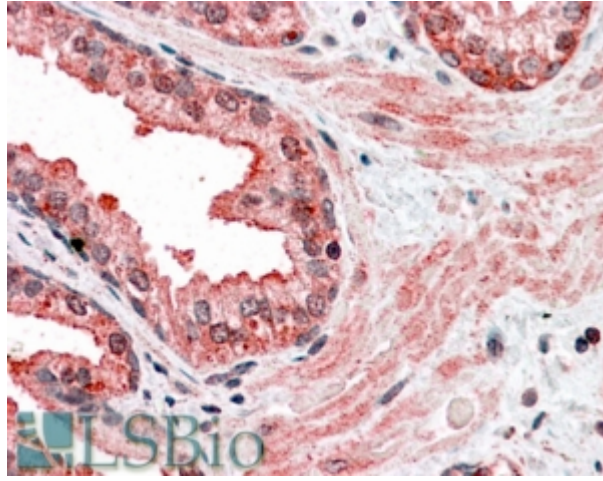
Western blot: Preliminary experiments gave an approx 55kDa band in K562 lysate at 0.5ug/ml. This band was successfully blocked by incubation with the immunising peptide. Please note that currently we cannot find an explanation in the literature for the band we observe given the predicted size of approx. 41kDa and 27kDa according to NP_036274; NP_411241. We would appreciate any feedback from people in the field - have any results been reported with other antibodies/lysates? Have any further splice variants/modified forms been reported?

IHC: In paraffin embedded Human Prostate shows textured cytoplasm staining with emphasis on the luminal side of the secretory cells in the glands. Recommended concentration, 3-6µg/ml.

Species Reactivity

Tested: Human

Expected from sequence similarity: Human, Dog



EB05706 (3.8 μ g/ml) staining of paraffin embedded Human Prostate. Steamed antigen retrieval with citrate buffer pH 6, AP-staining.