



International Office

Everest Biotech Ltd

Vector Laboratories, Inc.
6737 Mowry Ave
Newark, CA 94560
United States

Customer Service:

customerservice@vectorlabs.com

Technical Service:

technical@vectorlabs.com

Tel: +1 (800) 227-6666

www.everestbiotech.com

**Research Use Only. Not for
diagnostic or therapeutic use.**

EB12790 - Goat Anti-GDE1 / MIR16 (aa230-242) Antibody

Size: 100µg specific antibody in 200µl



Target Protein

Principal Names: GDE1, glycerophosphodiester phosphodiesterase 1, 363E6.2, MIR16, RGS16-interacting membrane protein, membrane interacting protein of RGS16, membrane-interacting protein of RGS16

Official Symbol: GDE1

Accession Number(s): NP_057725.1

Human GeneID(s): [51573](#)

Non-Human GeneID(s): 56209 (mouse), 60418 (rat)

Immunogen

Peptide with sequence C-SLSHTGDGKPRYD, from the internal region of the protein sequence according to NP_057725.1.

Please note the [peptide](#) is available for sale.

Purification and Storage

Purified from goat serum by ammonium sulphate precipitation followed by antigen affinity chromatography using the immunizing peptide.

Supplied at 0.5 mg/ml in Tris saline, 0.02% sodium azide, pH7.3 with 0.5% bovine serum albumin.

Aliquot and store at -20°C. Minimize freezing and thawing.

Applications Tested

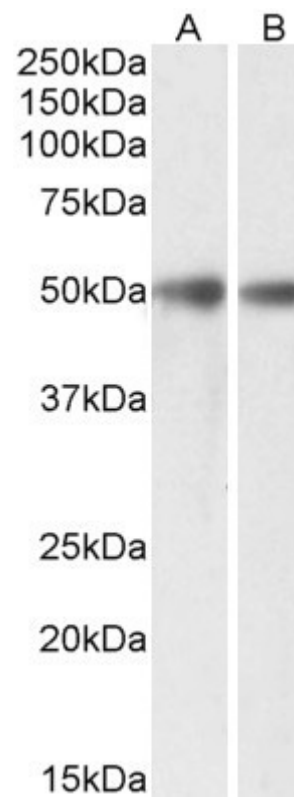
Peptide ELISA: antibody detection limit dilution 1:128000.

Western blot: Approx 50kDa band observed in Mouse and Rat Brain lysates (calculated MW of 37.7kDa according to NP_057725.1). The observed molecular weight corresponds to the glycosylated form. Recommended concentration: 0.3-1µg/ml.

Species Reactivity

Tested: Mouse, Rat

Expected from sequence similarity: Human, Mouse, Rat, Dog



EB12790 (0.3µg/ml) staining of Mouse (A) and Rat (B) Brain lysates (35µg protein in RIPA buffer). Primary incubation was 1 hour. Detected by chemiluminescence.