

UK Office

Everest Biotech Ltd

Cherwell Innovation Centre
77 Heyford Park
Upper Heyford
Oxfordshire
OX25 5HD
UK

Enquiries:

info@everestbiotech.com

Sales:

sales@everestbiotech.com

Tech support:

support@everestbiotech.com

Tel: +44 (0)1869 238326

www.everestbiotech.com

**Research Use Only. Not for
diagnostic or therapeutic use.**

EB07114 - Goat Anti-GEF5 Antibody

Size: 100µg specific antibody in 200µl



Target Protein

Principal Names: GEF5, DKFZp686N1969, ARHGEF5, Rho guanine nucleotide exchange factor (GEF) 5, P60, TIM, TIM1, guanine nucleotide regulatory protein TIM, oncogene TIM rho guanine nucleotide exchange factor 5, transforming immortalized mammary oncogene

Official Symbol: ARHGEF5

Accession Number(s): NP_005426.2

Human GeneID(s): [7984](#)

Immunogen

Peptide with sequence C-DKEIDQNSQQEE, from the internal region of the protein sequence according to NP_005426.2.

Please note the [peptide](#) is available for sale.

Purification and Storage

Purified from goat serum by ammonium sulphate precipitation followed by antigen affinity chromatography using the immunizing peptide.

Supplied at 0.5 mg/ml in Tris saline, 0.02% sodium azide, pH7.3 with 0.5% bovine serum albumin.

Aliquot and store at -20°C. Minimize freezing and thawing.

Applications Tested

Peptide ELISA: antibody detection limit dilution 1:16000.

Western blot: Approx 170kDa band observed in Human HeLa lysates (calculated MW of 177kDa according to NP_005426.2). Recommended concentration: 0.1-0.3µg/ml.

IHC: Paraffin embedded Human Placenta. Recommended concentration: 3.75µg/ml.

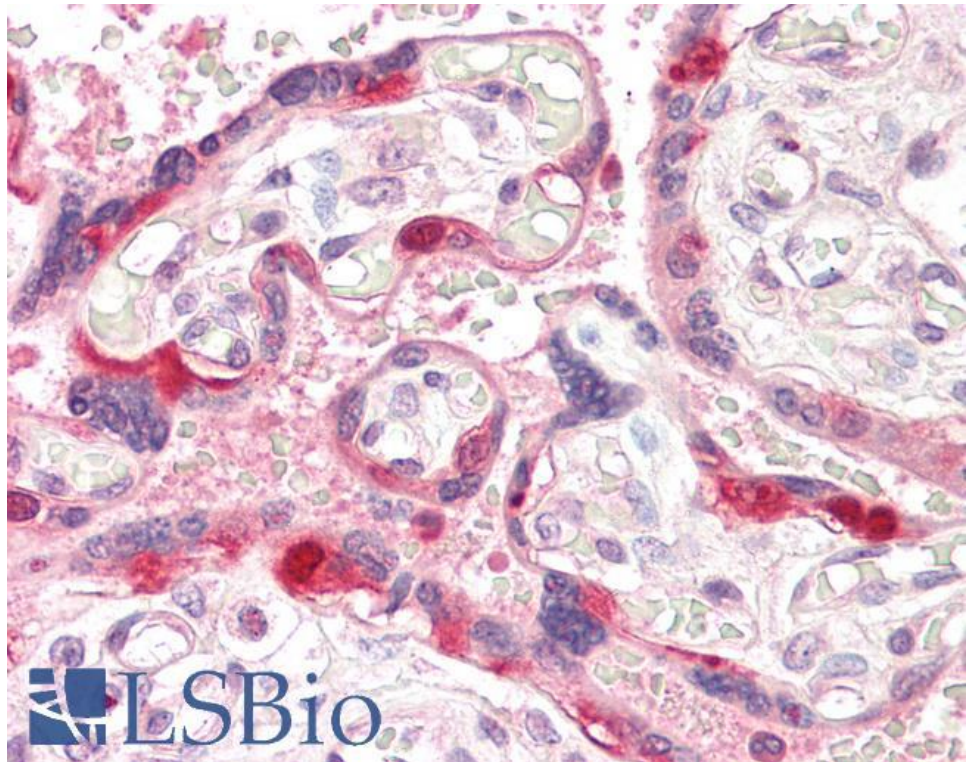
Species Reactivity

Tested: Human

Expected from sequence similarity: Human



EB07114 (0.1 μ g/ml) staining of HeLa Lysate (35 μ g protein in RIPA buffer). Primary incubation was 1 hour. Detected by chemiluminescence.



EB07114 (3.75 μ g/ml) staining of paraffin embedded Human Placenta. Steamed antigen retrieval with citrate buffer pH 6, AP-staining.