



## UK Office

### Everest Biotech Ltd

Cherwell Innovation Centre  
77 Heyford Park  
Upper Heyford  
Oxfordshire  
OX25 5HD  
UK

Enquiries:

[info@everestbiotech.com](mailto:info@everestbiotech.com)

Sales:

[sales@everestbiotech.com](mailto:sales@everestbiotech.com)

Tech support:

[support@everestbiotech.com](mailto:support@everestbiotech.com)

Tel: +44 (0)1869 238326

[www.everestbiotech.com](http://www.everestbiotech.com)

**Research Use Only. Not for  
diagnostic or therapeutic use.**

## EB07503 - Goat Anti-Gelsolin / GSN Antibody

Size: 100µg specific antibody in 200µl



### Target Protein

**Principal Names:** GSN, gelsolin, gelsolin (amyloidosis, Finnish type), DKFZp313L0718

**Official Symbol:** GSN

**Accession Number(s):** NP\_000168.1; NP\_937895.1; NP\_001121138.1;  
NP\_001244958.1; NP\_001244959.1; NP\_001121135.2; NP\_001340005.1;  
NP\_001340007.1

**Human GeneID(s):** [2934](#)

**Non-Human GeneID(s):** 227753 (mouse), 296654 (rat)

**Important Comments:** This antibody is expected to recognize isoforms a, b, c, d, e, f, g, h

### Immunogen

Peptide with sequence C-PRLKDKKMDAHP, from the internal region of the protein sequence according to NP\_000168.1; NP\_937895.1; NP\_001121138.1; NP\_001244958.1; NP\_001244959.1; NP\_001121135.2; NP\_001340005.1; NP\_001340007.1.

Please note the [peptide](#) is available for sale.

### Purification and Storage

Purified from goat serum by ammonium sulphate precipitation followed by antigen affinity chromatography using the immunizing peptide.

Supplied at 0.5 mg/ml in Tris saline, 0.02% sodium azide, pH7.3 with 0.5% bovine serum albumin.

Aliquot and store at -20°C. Minimize freezing and thawing.

### Applications Tested

**Peptide ELISA:** antibody detection limit dilution 1:128000.

**Western blot:** Approx 90kDa observed in Human Colorectal cancer lysates and in preliminary testing of Human Spleen and Parathyroid lysate (calculated MW of 85.7kDa according to NP\_000168.1). Recommended concentration: 0.1-2µg/ml. Primary incubation 1 hour at room temperature.

**Flow Cytometry:** Flow cytometric analysis of HeLa cells. Recommended concentration: 10ug/ml.

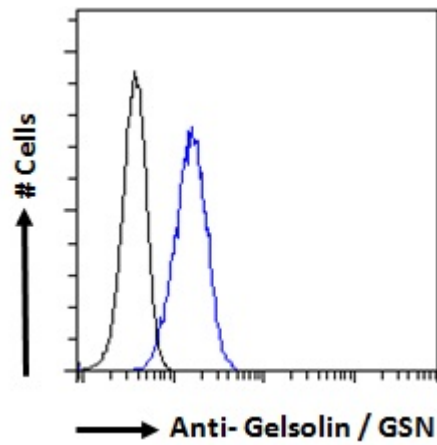
### Species Reactivity

**Tested:** Human

**Expected from sequence similarity:** Human, Mouse, Rat, Dog, Cow



EB07503 (1µg/ml) staining of Human Colorectal cancer lysate (35µg protein in RIPA buffer). Detected by chemiluminescence.



EB07503 Flow cytometric analysis of paraformaldehyde fixed HeLa cells (blue line), permeabilized with 0.5% Triton. Primary incubation 1hr (10ug/ml) followed by Alexa Fluor 488 secondary antibody (1ug/ml). IgG control: Unimmunized goat IgG (black line) followed by Alexa Fluor 488 secondary antibody.