



## International Office

### Everest Biotech Ltd

Vector Laboratories, Inc.  
6737 Mowry Ave  
Newark, CA 94560  
United States

Customer Service:

[customerservice@vectorlabs.com](mailto:customerservice@vectorlabs.com)

Technical Service:

[technical@vectorlabs.com](mailto:technical@vectorlabs.com)

Tel: +1 (800) 227-6666

[www.everestbiotech.com](http://www.everestbiotech.com)

**Research Use Only. Not for  
diagnostic or therapeutic use.**

## EB09476 - Goat Anti-GGCX Antibody

Size: 100µg specific antibody in 200µl



### Target Protein

**Principal Names:** GGCX, gamma-glutamyl carboxylase, FLJ26629, VKCFD1, vitamin K-dependent gamma-carboxylase

**Official Symbol:** GGCX

**Accession Number(s):** NP\_000812.2; NP\_001135741.1

**Human GeneID(s):** [2677](#)

**Important Comments:** This antibody is expected to recognize both isoforms (NP\_000812.2; NP\_001135741.1).

### Immunogen

Peptide with sequence C-PPESNPDPVHSE, from the C Terminus of the protein sequence according to NP\_000812.2; NP\_001135741.1.

Please note the [peptide](#) is available for sale.

### Purification and Storage

Purified from goat serum by ammonium sulphate precipitation followed by antigen affinity chromatography using the immunizing peptide.

Supplied at 0.5 mg/ml in Tris saline, 0.02% sodium azide, pH7.3 with 0.5% bovine serum albumin.

Aliquot and store at -20°C. Minimize freezing and thawing.

### Applications Tested

**Peptide ELISA:** antibody detection limit dilution 1:32000.

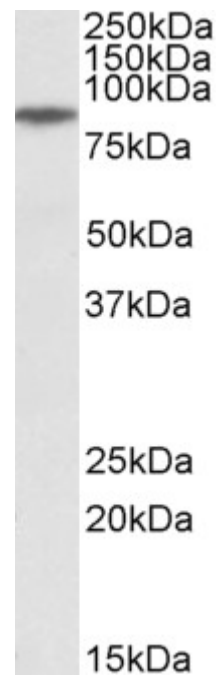
**Western blot:** Approx 85kDa band observed in Human Muscle lysates (calculated MW of 85kDa according to NP\_000812.2). Recommended concentration: 0.3-1µg/ml. Primary incubation was 1 hour.

**IHC:** In paraffin embedded Human Kidney shows distinct staining in the cytoplasm of epithelial cells. Recommended concentration: 5-10µg/ml.

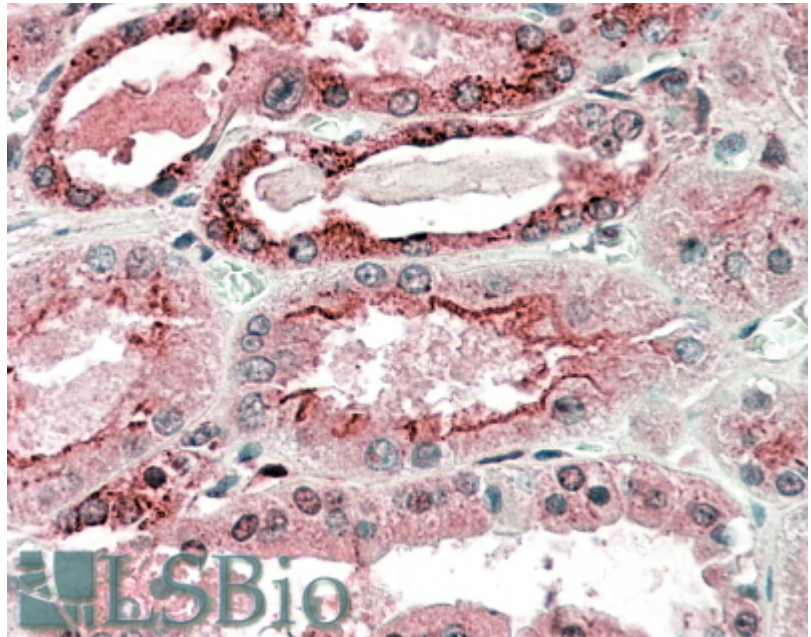
### Species Reactivity

**Tested:** Human

**Expected from sequence similarity:** Human, Dog



EB09476 (0.3µg/ml) staining of Human Muscle lysate (35µg protein in RIPA buffer). Detected by chemiluminescence.



EB09476 (5µg/ml) staining of paraffin embedded Human Kidney. Steamed antigen retrieval with citrate buffer pH 6, AP-staining.