



## EB09476 - Goat Anti-GGCX Antibody

Size: 100µg specific antibody in 200µl



### UK Office

#### Everest Biotech Ltd

Cherwell Innovation Centre  
77 Heyford Park  
Upper Heyford  
Oxfordshire  
OX25 5HD  
UK

Enquiries:

[info@everestbiotech.com](mailto:info@everestbiotech.com)

Sales:

[sales@everestbiotech.com](mailto:sales@everestbiotech.com)

Tech support:

[support@everestbiotech.com](mailto:support@everestbiotech.com)

Tel: +44 (0)1869 238326

Fax: +44 (0)1869 238327

### US Office

#### Everest Biotech c/o Abcore

405 Maple Street, Suite A106  
Ramona,  
CA 92065  
USA

Inquiries:

[info@everestbiotech.com](mailto:info@everestbiotech.com)

Sales:

[usasales@everestbiotech.com](mailto:usasales@everestbiotech.com)

Tech support:

[support@everestbiotech.com](mailto:support@everestbiotech.com)

Tel: 888-320-4628 (toll-free)

Fax: 888-841-9041

[www.everestbiotech.com](http://www.everestbiotech.com)

**Research Use Only. Not for diagnostic or therapeutic use.**

### Target Protein

**Principal Names:** GGCX, gamma-glutamyl carboxylase, FLJ26629, VKCFD1, vitamin K-dependent gamma-carboxylase

**Official Symbol:** GGCX

**Accession Number(s):** NP\_000812.2; NP\_001135741.1

**Human GeneID(s):** [2677](#)

**Important Comments:** This antibody is expected to recognize both isoforms (NP\_000812.2; NP\_001135741.1).

### Immunogen

Peptide with sequence C-PPESNPDPVHSE, from the C Terminus of the protein sequence according to NP\_000812.2; NP\_001135741.1.

Please note the [peptide](#) is available for sale.

### Purification and Storage

Purified from goat serum by ammonium sulphate precipitation followed by antigen affinity chromatography using the immunizing peptide.

Supplied at 0.5 mg/ml in Tris saline, 0.02% sodium azide, pH7.3 with 0.5% bovine serum albumin.

Aliquot and store at -20°C. Minimize freezing and thawing.

### Applications Tested

**Peptide ELISA:** antibody detection limit dilution 1:32000.

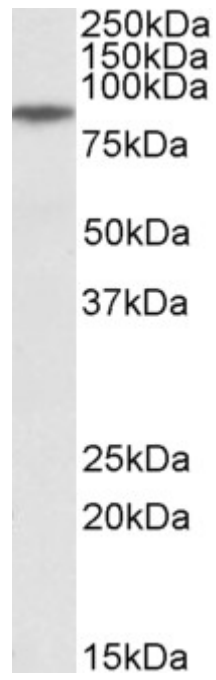
**Western blot:** Approx 85kDa band observed in Human Muscle lysates (calculated MW of 85kDa according to NP\_000812.2). Recommended concentration: 0.3-1µg/ml. Primary incubation was 1 hour.

**IHC:** In paraffin embedded Human Kidney shows distinct staining in the cytoplasm of epithelial cells. Recommended concentration: 5-10µg/ml.

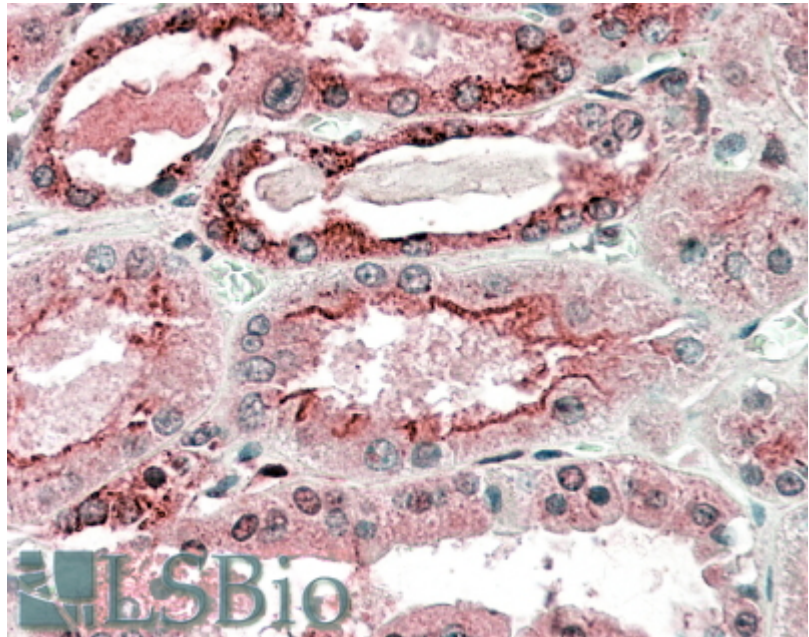
### Species Reactivity

**Tested:** Human

**Expected from sequence similarity:** Human, Dog



EB09476 (0.3 $\mu$ g/ml) staining of Human Muscle lysate (35 $\mu$ g protein in RIPA buffer). Detected by chemiluminescence.



EB09476 (5 $\mu$ g/ml) staining of paraffin embedded Human Kidney. Steamed antigen retrieval with citrate buffer pH 6, AP-staining.