



International Office

Everest Biotech Ltd

Vector Laboratories, Inc.
6737 Mowry Ave
Newark, CA 94560
United States

Customer Service:

customerservice@vectorlabs.com

Technical Service:

technical@vectorlabs.com

Tel: +1 (800) 227-6666

www.everestbiotech.com

**Research Use Only. Not for
diagnostic or therapeutic use.**

EB11992 - Goat Anti-GGT1 Antibody

Size: 100µg specific antibody in 200µl



Target Protein

Principal Names: GGT1, gamma-glutamyltransferase 1, CD224, D22S672, D22S732, GGT, GGT 1, GTG, gamma-glutamyl transpeptidase, gamma-glutamyltranspeptidase 1, glutamyl transpeptidase, glutathione hydrolase 1

Official Symbol: GGT1

Accession Number(s): NP_005256.2

Human GeneID(s): [2678](#)

Important Comments: Reported variants represent identical protein: NP_038347.2, NP_001027536.1, NP_001027537.1, NP_005256.2.

Immunogen

Peptide with sequence C-PSASKEPDNHVYTR, from the internal region (near N terminus) of the protein sequence according to NP_005256.2.

Please note the [peptide](#) is available for sale.

Purification and Storage

Purified from goat serum by ammonium sulphate precipitation followed by antigen affinity chromatography using the immunizing peptide.

Supplied at 0.5 mg/ml in Tris saline, 0.02% sodium azide, pH7.3 with 0.5% bovine serum albumin.

Aliquot and store at -20°C. Minimize freezing and thawing.

Applications Tested

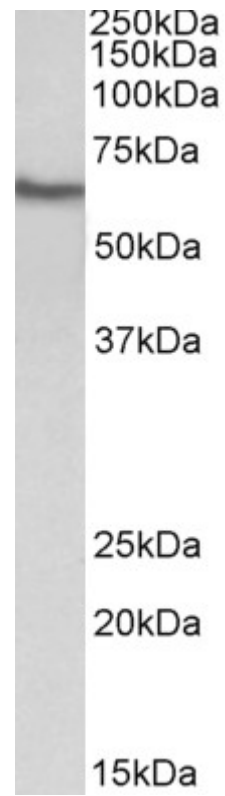
Peptide ELISA: antibody detection limit dilution 1:128000.

Western blot: Approx 60kDa band observed in Human Kidney lysates (calculated MW of 61.4kDa according to NP_005256.2). Recommended concentration: 0.3-1µg/ml.

Species Reactivity

Tested: Human

Expected from sequence similarity: Human



EB11992 (0.3µg/ml) staining of Human Kidney lysate (35µg protein in RIPA buffer). Primary incubation was 1 hour. Detected by chemiluminescence.