



## UK Office

### Everest Biotech Ltd

Cherwell Innovation Centre  
77 Heyford Park  
Upper Heyford  
Oxfordshire  
OX25 5HD  
UK

Enquiries:

[info@everestbiotech.com](mailto:info@everestbiotech.com)

Sales:

[sales@everestbiotech.com](mailto:sales@everestbiotech.com)

Tech support:

[support@everestbiotech.com](mailto:support@everestbiotech.com)

Tel: +44 (0)1869 238326

[www.everestbiotech.com](http://www.everestbiotech.com)

**Research Use Only. Not for  
diagnostic or therapeutic use.**

## EB09816 - Goat Anti-MICS1 / GHITM (aa117-127) Antibody

Size: 100µg specific antibody in 200µl



### Target Protein

**Principal Names:** dermal papilla-derived protein 2, DERP2, DKFZp566C0746, FLJ26584, growth hormone inducible transmembrane protein, HSPC282, MICS1, mitochondrial morphology and cristae structure 1, My021, PTD010, TMBIM5, transmembrane BAX inhibitor motif containing, GHITM

**Official Symbol:** GHITM

**Accession Number(s):** NP\_055209.2

**Human GeneID(s):** [27069](#)

**Non-Human GeneID(s):** 290596 (rat)

### Immunogen

Peptide with sequence C-PQYVKDRIHST, from the internal region of the protein sequence according to NP\_055209.2.

Please note the [peptide](#) is available for sale.

### Purification and Storage

Purified from goat serum by ammonium sulphate precipitation followed by antigen affinity chromatography using the immunizing peptide.

Supplied at 0.5 mg/ml in Tris saline, 0.02% sodium azide, pH7.3 with 0.5% bovine serum albumin.

Aliquot and store at -20°C. Minimize freezing and thawing.

### Applications Tested

**Peptide ELISA:** antibody detection limit dilution 1:4000.

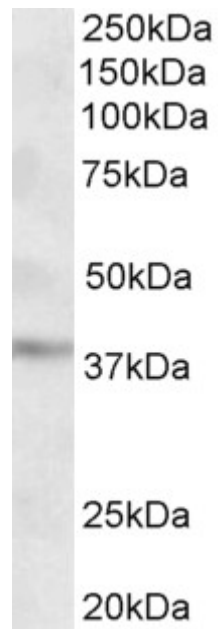
**Western blot:** Approx 38kDa band observed in Human Brain (Cerebral Cortex and Cerebellum) lysates (calculated MW of 37.2kDa according to NP\_055209.2).

Recommended concentration: 1-3µg/ml.

### Species Reactivity

**Tested:** Human

**Expected from sequence similarity:** Human, Rat, Dog, Cow



EB09816 (2 $\mu$ g/ml) staining of Human Cerebral Cortex lysate (35 $\mu$ g protein in RIPA buffer). Primary incubation was 1 hour. Detected by chemiluminescence.